

THE UK WASTE CLASSIFICATION SCHEME

DRAFT 16: JULY 1998

TABLE OF CONTENTS

1.0 INTRODUCTION	1
1.2 The Scheme in Use	2
1.2.1 Transferring Waste	2
1.2.2 Waste Management Licensing	2
1.2.3 Waste Surveys	2
2.0 DESCRIBING THE WASTE PRODUCER	2
3.0 PROVIDING DETAILS OF WASTE COMPOSITION	2
3.1 Introduction to the Classification of Waste Composition	2
3.2 Written Description	2
3.4 Codes for Classifying Waste Composition	3
3.5 Selecting Waste Composition Codes	3
3.5.1 Main Code	3
3.5.2 Detail Codes	4
3.5.3 Exceptions and Complications	4
3.5.4 Flowcharts	5
3.6 Concentration Codes	8
3.7 Detail Codes	8
3.8 The Waste Index	9
4.0 THE PROCESS WHICH PRODUCES THE WASTE	9
4.1 Process	9
5.0 DIFFICULT PROPERTIES OF THE WASTE	10
6.0 FORM	10
7.0 RATIONALE AND EXAMPLES	1140
7.1 Rationale	1140
7.1.1 Background	1140
7.1.2 Description	1240
7.1.3 Implications for Classification	1240
7.2 Examples	1240
7.2.1 Type of Problem : Description is not a waste composition	1340
7.2.2 Inadequate Description, Simple	1340
7.2.3 Type of Problem : Inadequate Description (complex)/inadequate knowledge	1440
 Annex 1	 The Standard Industrial Classification of Economic Activities (SIC) 1992
Annex 2	Codes for the Classification of Waste Composition
Annex 3	The Waste Index

INTRODUCTION

1.0 INTRODUCTION

People need to accurately describe their waste to others for various reasons:

- to say what kinds of waste they are allowed to handle (licensing)
- to say what kind of waste is being handed over (duty of care)
- to estimate total amounts of different kinds of waste, so that new facilities can be planned and progress towards targets, e.g. in the waste strategy¹ can be measured.

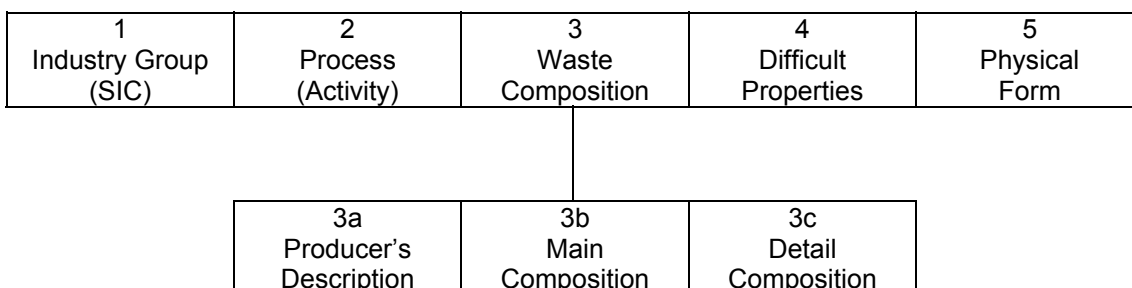
In the past, a variety of different classification schemes have been in use. This new UK scheme allows standard descriptions to be used, which can then be understood by everyone. The intended use of the scheme is described in section 1.2 below.

The scheme requires details of

- the type of waste producer (see section 2)
- the process producing the waste (see section 4)
- the composition of the waste (see section 3)
- the difficult properties of the waste (see section 5)
- the physical form of the waste (see section 6)

These are all explained in more detail in this guidance, in the sections indicated in brackets above. Other information about waste, such as the quantity or the type of container it is in, may be required for some purposes, but is not part of the classification system.

The complete classification of a waste comprises a number of elements, as follows:



This separation of the different elements is fundamental to the scheme. Some of the difficulties in trials of the scheme have arising due to the use of waste descriptions which provide a description of a process instead of a waste composition. For example, "car valeting waste" describes a process, not a composition.

The intended approach is described further in paras 3.2 and 3.3 below, and examples are provided in Section 7.0.

The scheme is intended for a number of uses, as described in Section 1.2 below. The elements of the classification may not all be used in any particular application, and will appear in different places on, for example transfer notes or survey forms. It is therefore helpful to keep in mind the above representation of the elements as a set of boxes in order to avoid confusing the elements.

¹ 'Making Waste Work - A strategy for Sustainable Waste Management in England and Wales'. Department of the Environment and Welsh Office publication CM3040, HMSO, 1995. The Scottish Environmental Protection Agency (SEPA) will prepare a strategy for Scotland.

1.2 The Scheme in Use

1.2.1 Transferring Waste

The use of the scheme on transfer notes required by the "Duty of Care" will be refined by large scale trials. It is envisaged that all of the above details will be provided on the transfer note.

1.2.2 Waste Management Licensing

Licences for waste management facilities should specify permitted wastes, excluded wastes and qualifications such as loading rates.

It is intended that the classification scheme might be used in either of two ways:

- i) By reference to codes from within the scheme. For example "Wastes shall not be deposited other than wastes in categories 21, 22.01 or 28.06".
- ii) By reproducing the composition system categories, stating "permitted" or "excluded" against each category. Qualifications can be specified alongside or by separate condition.

The method selected will depend upon the range of wastes permitted at the facility, with (i) appropriate to more limited sites and (ii) to broader licences.

1.2.3 Waste Surveys

The use of the scheme in waste surveys has been trialled by the Environment Agency in a pilot survey carried out as part of the National Waste Database project. A standard survey form has been produced which includes all the elements of the waste classification.

2.0 DESCRIBING THE WASTE PRODUCER

The most detailed applicable code for the premises actually producing the waste should be selected from the Standard Industrial Classification of economic activities (SIC) 1992. For example, earth moving work in preparation for construction would be 45.11. SIC 1992 is reproduced at annex 1 to this guidance.

3.0 PROVIDING DETAILS OF WASTE COMPOSITION

3.1 Introduction to the Classification of Waste Composition

The full scheme requires the provision of a written description of the waste, as well as codes chosen from the waste composition categories (Annex 2) and codes to identify the concentrations of constituents of the waste. These are all described in this section.

3.2 Written Description

The written description of the waste should accurately describe the composition of the waste. Descriptions such as "skip waste" (which describes where the waste is put), "production waste" (which vaguely identifies the source of the waste) or "industrial waste" (which is too broad to accurately identify composition) should not be used. Examples of accurate waste descriptions are:

- "sawdust with lubricating oil spillage"

- “plastic packaging with baling wire”
- “vinyl wallpaper offcuts”
- “empty paint tins”

3.3 Problems in describing Waste Composition

The trialling of the scheme by the Environment Agency allowed the identification of a number of wastes which Agency staff had difficulty in classifying. Review of the waste descriptions which gave rise to difficulty shows that there seem to be three common types of problem, as follows.

- i) The use of descriptions which do not describe waste composition, for example “cider production waste”.*
- ii) The use of descriptions which do not convey sufficient information about the composition, for example “waste strapping”. This could be metal, plastic, leather, rubber etc.*
- iii) Wastes whose composition may not be readily known and which may require further enquiry or research, for example “polaroid waste”, “OHP Acetates” and “Photocopier Toner Cartridges”.*

To assist with these types of problem, some further explanation of the rationale for the scheme is provided at Section 7, along with some examples. Annex 2 also contains notes to assist in deciding whether any particular category is appropriate for a waste being considered.

3.4 Codes for Classifying Waste Composition

The system for classifying waste composition at annex 2 describes wastes by the use of numerical codes. It has several levels, each representing a different level of detail. Thus:

- 22 is general and biodegradable waste
- 2202 is construction and/or demolition waste
- 220202 is asphalt, bitumen and/or coated roadstone

In this case, 22 is the first level, 2202 is the second level and 220202 is the third level. All three levels are referred to as “categories” e.g. “category 22 waste”, “category 2202 waste”, “category 220202 waste”, “wastes within category 220202”. All three levels must be referred to in turn to identify the appropriate third level code. For example, excreta could be classified three different ways according to its origins. Category 250203 is for excreta, but only if it is within category 25 “Healthcare risk wastes”. Otherwise, the excreta should be assigned within category 2210, sewage, or to 220705 for animal excreta.

3.5 Selecting Waste Composition Codes

3.5.1 Main Code

The intent of the scheme is that the code should be selected from Annex 2 which **describes the constituent which makes up the greatest proportion of the waste by weight**, excluding water. For example, an effluent sludge might be 90% water, but the code should be selected for the constituent which is the greatest proportion of the remainder, for example, calcium sulphate.

The scheme at annex 2 contains examples of inclusions and exclusions for some of the categories. These are not intended to be exhaustive lists, but are intended to resolve some of the common questions and misunderstandings which arose during the consultations leading to the preparation of the scheme.

3.5.2 Detail Codes

If appropriate, (see section 3.6) a number of codes should be provided, again from annex 2, to give more details about the make up of the waste.

For example, for a mixed industrial waste:

- details of the amount of e.g. paper, metal and glass in it.

For a contaminated soil:

- details of the contaminants.

In the above example of an effluent sludge, detail codes might describe, for example, any content of heavy metals such as copper, nickel or zinc.

3.5.3 Exceptions and Complications

As described above, the general intent is to describe the bulk composition of the waste, and then describe any detail components. However, there are a number of exceptions and complications, which are explained below. Flowcharts 1 and 2 are also intended to assist.

i) Mixed Wastes

The general philosophy of the scheme is that mixed waste codes should be used as a last resort. For example, if a waste is usually 60% paper, 30% plastic and 10% glass, then the main code would be paper, with plastic and glass described as details, rather than the mixed waste code 22.09.03 be applied.

Where wastes are very mixed or the properties vary greatly, then the mixed waste code is appropriate.

If category 21 wastes are mixed with other category 21 wastes, then the 21.04.00 code is appropriate. If category 21 waste is mixed with category 22 or 23 components, then the category 22 mixed waste codes should be used.

ii) Contaminated Wastes

Where wastes in category 21 or 22 contain materials in categories 25-32, then the way in which bulk and detail are coded change.

Any content of microbiological risk (25), asbestos (26), radioactive (31) or explosive (32) renders the whole stream as being in that category. The bulk components would then be described using detail codes.

Where the category 21 or 22 waste contains “chemicals”, mainly in the case of groups 28 and 29 chemicals but also elements of group 23 or 27, then the waste is a contaminated waste. A code from category 24 is chosen, and the chemicals described by detail codes.iii) **Scrap**

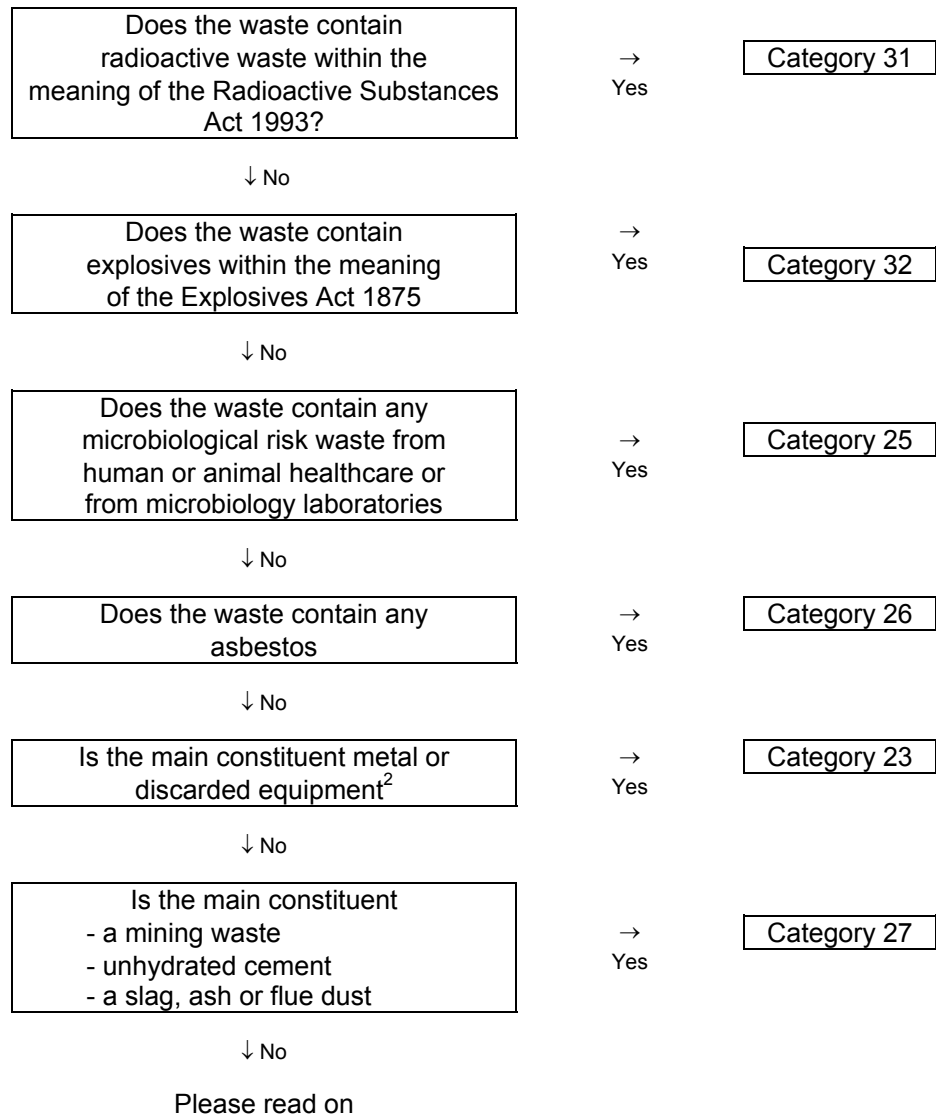
The detail components present in scrap, such as acid in a battery or PCBs in a transformer are treated as details not as contamination. Hence they will be category 23 codes with detail, not category 24 codes plus detail.

3.5.4 Flowcharts

Flowcharts 1 and 2 below should assist. Flowchart 1 is intended to eliminate the most obvious decisions first, eg is the waste explosive or radioactive? Flowchart 2 is intended to illustrate the issues described in 3.5.3 (i-iii) above, and assist in the coding of mixed and contaminated wastes.

Flowchart 1

Answer the questions in the left hand column below, and then follow the references or instructions provided. The categories referenced in column 2 can be found in annex 1.



If the answer to all the questions is “no”, then the waste is “general”, “chemical” or contaminated waste.

Broadly:

² Equipment means composite items made from a variety of materials fixed together, such as vehicles, household appliances, lamps and batteries.

- **general waste** is in categories 21 and 22, and includes materials similar to those in a normal household dustbin.
- **chemical waste** is waste chemicals as well as:
 - carbon wastes
 - paints
 - adhesives
 - varnish
 - ink
 - dyestuffs
 - pigments
 - cosmetics
 - detergents and surfactants
 - mineral oils
 - solvents
 - monomers and precursors
 - tarry wastes
 - pharmaceuticals
 - biocides

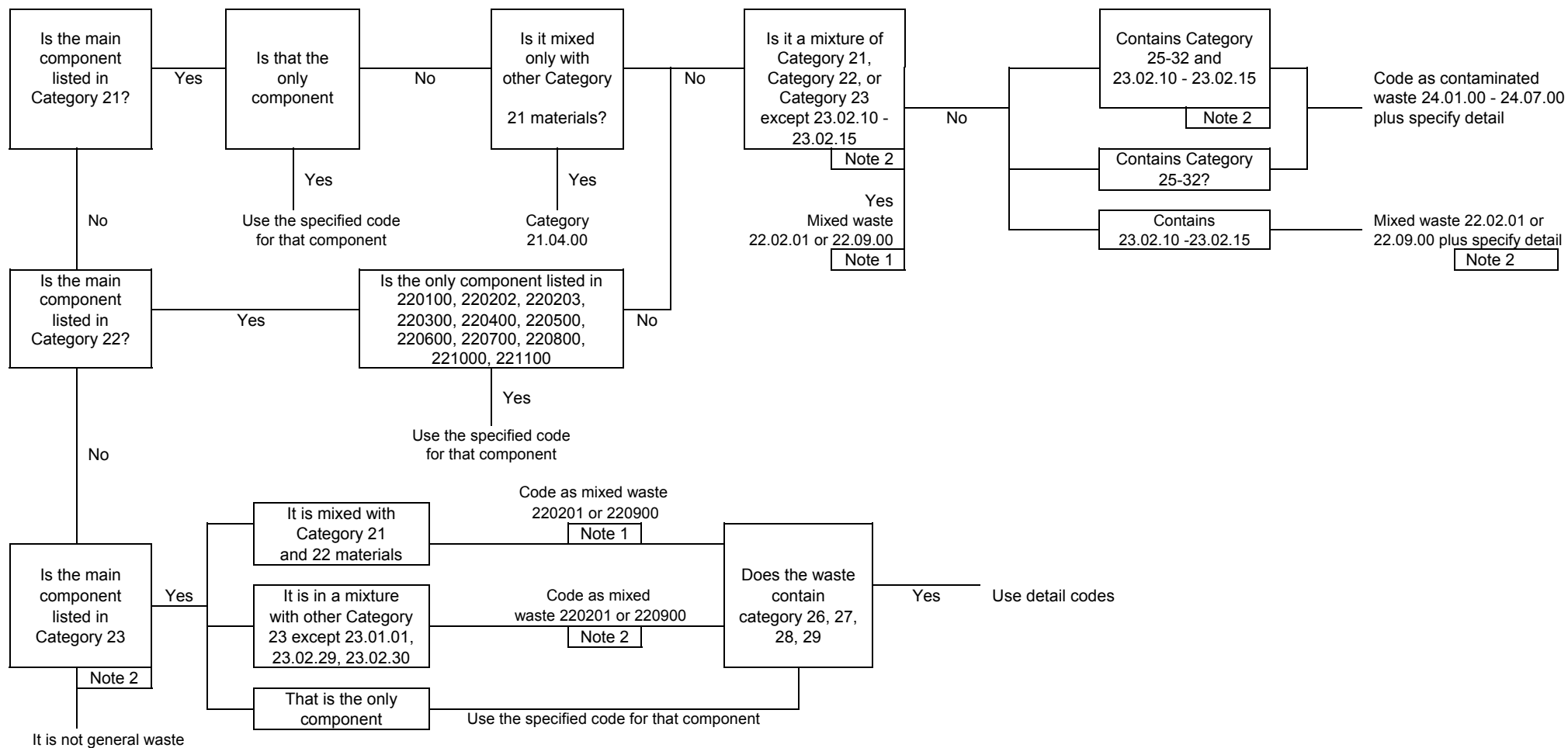
However, note that some wastes of a chemical nature might also be found in category 23. This applies to metal elements such as cadmium and arsenic, and to equipment which contains chemicals, such as batteries.

- **contaminated waste** has been explained at paragraph 3.4.3 (ii).

For chemical wastes, select the appropriate description from categories 28, 29 or 30.

For wastes whose main constituent is listed in categories 21 - 23, follow flowchart 2.

FLOWCHART 2



- Notes:
1. Mixed waste is assigned within 220201 or 220900 according to the activity producing it.
 2. Some category 23 wastes may be hazardous or contain hazardous materials. They are still category 23, but the hazardous component e.g. mercury, battery acid or CFC should be shown.

3.6 Concentration Codes

The following codes can be used with both main codes and detail codes to show the concentrations of the waste constituents:

C1	up to 10 µg/kg
C2	10 µg or above but less than 100 µg/kg
C3	100 µg or above but less than 1000 µg/kg
C4	1 mg or above but less than 10 mg/kg
C5	10 mg or above but less than 100 mg/kg
C6	100 mg or above but less than 1000 mg/kg
C7	0.1% or above but less than 1% w/w
C8	1% or above but less than 5% w/w
C9	5% or above but less than 10% w/w
C10	10% or above but less than 20% w/w
C11	20% or above but less than 40% w/w
C12	40% or above but less than 60% w/w
C13	60% or above but less than 80% w/w
C14	80% to 100% w/w

3.6.1 Packaging Waste

The Departments of Trade and Industry and of Environment, Transport and the Regions are considering how to meet the reporting requirements of the European Directive on Packaging and Packaging Waste, and intend that the waste classification system will facilitate this. Where a waste constituent is waste packaging, the suffix "P" should be used with the concentration code to facilitate this,

3.7 Detail Codes

In many cases it will be necessary to detail the presence of constituents which are not the main constituent.

Examples are:

- the chemical content of batteries
- polychlorinated biphenyls (PCBs) in electrical equipment
- CFCs in refrigerators
- polychlorinated biphenyls and heavy metals in fragmentation residues
- contaminants in contaminated soils
- phenols in foundry sand
- surfactants in drilling mud
- asbestos in demolition waste
- heavy metals in slags and ashes
- dioxins in fly ashes
- dissolved metal compounds in waste acids
- halogenated solvents in paints or inks
- halogenated organic chemicals in oils or solvents
- inorganic acids in acid tars
- polynuclear aromatic hydrocarbons in tarry wastes or oils

To facilitate waste planning, it will frequently be desirable to provide the individual constituents of mixed wastes:

For example, it would be desirable to indicate the average or typical composition of:

- mixed construction or demolition waste: how much brick, concrete, glass, timber might be recycled?
- mixed commercial waste: how much paper, cardboard, metal might be recycled?
- mixed industrial waste: how much of the waste is combustible? or compostable?

In all the above examples, codes from annex 2 should be used to specify the detailed composition of the waste.

3.8 The Waste Index

A "Waste Index" has been prepared to assist in the selection of appropriate waste composition codes. The index is at annex 3 to this guidance. Its use requires an understanding of the use of the scheme as described in sections 3.4 and 3.6 above.

4.0 THE PROCESS WHICH PRODUCES THE WASTE

4.1 Process

In addition to specifying industry type by means of the SIC Code (section 2 of this guidance) a more detailed description of the process (activity) which produces the waste should be provided. The Environment Agency is considering publishing a standard coding list for processes. The pilot survey will be used to assess the range of processes in use. In the meantime, waste producers should provide a written description in their own words. Typical activities might be:

- rejecting raw materials
- packing and unpacking
- rejecting off-specification products
- laboratory
- building maintenance
- ground maintenance
- plant maintenance
- vehicle maintenance
- office administration
- canteen
- energy use
- water softening
- effluent treatment
- physical shaping
- sorting

In some cases simple processes such as grinding or polishing may have a special name in the industry. Waste producers are asked to note both the special name and a more generic name if possible.

In some cases, wastes from a number of processes may be mixed. Producers should write "all processes", or list the processes, or group them as, for example, "production" and "ancillary processes".

5.0 DIFFICULT PROPERTIES OF THE WASTE

The following codes should be used where applicable to describe those properties or physical forms which affect handling of the waste:

Code	Property
H15	Finely divided metal
H16	Dust or powder
H17	Pressurised gas
H18	Odorous
H19	Sharp
H20	Light

6.0 FORM

The physical form of the waste should be specified using one of the following options:

F1	Powdery/powder
F2	Solid
F3	Viscous/paste
F4	Sludge
F5	Liquid
F6	Gaseous

Specific industries may wish to use additional, more detailed descriptions and codes for form, for example those in use by the metal and recycling industries. They may do so, but this will not form part of the national scheme.

7.0 RATIONALE AND EXAMPLES

7.1 Rationale

7.1.1 Background

i) Aims

The scheme has been developed to fulfil a number of purposes:

- describe wastes on transfer notes;
- describe permitted wastes on licences;
- use in waste planning;
- use to gather and report national statistics.

ii) Early Work

Development of the scheme began from a regulatory perspective, that is, it attempted to group wastes according to potential environmental impacts, primarily in landfill. The coding system used in the old Waste Management Papers 2, 3 and 26 (1986) was compared with those used by various Waste Regulation Authorities and with the EWC and the OECD Green, Amber and Red classification.

This led to the production of a first draft.

iii) Evolution

The scheme was then developed with inputs from workshops, a project steering group, public consultation and trials at waste management facilities and in the pilot survey. The scheme was changed to make it useful in the evaluation of wastes for recycling potential. The final product necessarily incorporates a number of compromises.

iv) Compromises

- a) Between a very detailed scheme with, for example, every inorganic chemical and many different kinds of glass, or just a few broad categories for ease of use.
- b) Between generic descriptions and chemical descriptions, for example, paper could be biodegradable polymer or a complex carbohydrate.
- c) Between generic grouping or maintaining a rigid "flow of hazard", for example dried paint could be classified with plastics and polymers, but has been grouped with paint as an organic chemical.
- d) There has been limited introduction of source rather than composition into the scheme: eg household waste.
- e) Between generic grouping and testing of properties. For example, the assignment between inert wastes, slags and contaminated soils would ideally be based on leaching tests and trigger values (and work is proceeding to develop such tests).

7.1.2 Description

The final scheme remains one in which wastes are primarily grouped according to potential environmental risks. Thus, for example, the non-biodegradable plastics and polymers are separated from biodegradable paper and card. Finely divided wood is separated from timber because it biodegrades more rapidly. Topsoil, with its organic and leachable content is separate from subsoil.

Overall, there is a general flow from inert, through biodegradable and putrescible, to chemical, radioactive and explosive. However, materials commonly traded by metal recyclers are all grouped together regardless of hazard. Microbiological waste and asbestos are grouped together as particular hazards.

7.1.3 Implications for Classification

Where there is doubt as to the appropriate classification of waste, consideration of the underlying rationale can assist:

What are the likely properties of the waste and what do they mean with regard to potential environmental impacts and possible waste management options?

7.2 Examples

The following examples which arose during the trialling of the scheme may assist in understanding the scheme. Additional notes, and examples of exclusions and inclusions for the various categories are contained in Annex 2.

7.2.1 Type of Problem : Description is not a waste composition

i) "Waste from Cider Production"

This is a description of an industry type, not a waste composition. SIC 15.94 is the manufacture of cider and other fruit wines. It is understood that the waste in question was twigs and cuttings from the care of cider orchards. The correct code for such waste is 22.06.03 "vegetation and or vegetable waste". Had the waste been, for example, the waste from fermentation of the cider, then the appropriate code would be 22.11.01 "residues from fermentation and other microbiological production processes".

Solution:

Think of how the waste will be disposed of - incineration, landfill, recycling etc, and then think of the information needed to make that decision. Specify the composition - what the waste is - rather than where it comes from.

ii) "Car Valeting Waste"

Car valeting is an activity or process which might be carried out as part of SIC 50.20 or 50.30 or 93.05. Classification depends upon the composition of the waste. A mixture of dirt, rubbish and cigarette ends would be 22.09.02, mixed commercial waste. The use of detergents or the cleaning of the engine compartment might move the waste into a contaminated category.

Solution:

Think of how the waste will be disposed of - incineration, landfill, recycling etc, and then think of the information needed to make that decision. Specify the composition - what the waste is - rather than where it comes from.

7.2.2 Inadequate Description, Simple

i) "Mixed Food Packaging"

This is confusing in two ways - is it the food or the packaging that is mixed? More importantly, what is the packaging made of - paper, plastic, aluminium?

Solution:

Always try to describe at least the major component of the waste, whatever it is, as this is much more informative than "mixed waste" which could be anything. Don't be afraid of giving too much information. In some cases, the types may be genuinely so mixed and variable that a main component cannot be distinguished. In this case use 22.09.02 from eg a fast food outlet, or 22.09.03 from a factory.

ii) "Waste strapping"

This could be plastic or ferrous metal strapping, or could be leather or rubber. An earth strap on a car would be braided non-ferrous metal. This leads to a very varied choice of codes:

22.04.02	plastics and polymers;
22.04.03	rubber;
22.07.01	leather;
23.01.03	steel;
23.02.02	copper;
23.02.12	mixed/unknown non-ferrous.

Solution:

Be as precise as possible about composition. This will become easier as familiarity with the scheme grows.

iii) "Fabric waste"

This provides a more precise description, and narrower range of potential variation, than example (ii) above. There are nevertheless the following options:

22.04.05	synthetic textiles;
22.04.06	mixed/unidentified textiles;
22.06.01	vegetable fabric (eg cotton);
22.07.02	animal fibres.

The reason for the distinctions relates to potential for recycling and to biodegradability. Animal hair is protein based, and will produce nitrogen compounds on decomposition.

Solution

Be as precise as possible about composition. This will become easier as familiarity with the scheme grows.

7.2.3 Type of Problem : Inadequate Description (complex)/Inadequate Knowledge

i) "Polaroid waste"

This could be film, cameras, developing fluid etc

Developed photos would be coated paper 22.04.10. Cameras would be 23.05.01 : mainly non-metallic electronic equipment. Photochemicals would be placed within categories 28 or 29 as appropriate, or might be mixed chemical smalls if from a factory : 30.00.00.

Solution:

Producer : Try not to use industry jargon - this may not be understood by a regulator/planner. Equally bad, the user may wrongly believe they can guess what the waste is.

Regulator/Planner

Solution:

Obtain as much information as possible from the waste producer. Don't be afraid to ask for more details. Do some research if necessary. Remember that the final choice is for the disposal route for the waste, so information about toxicity, biodegradability etc is very useful. If you don't know, ask someone who does.

At least describe what you can, whether something is a film, powder, liquid or whatever may be very important.

ii) "OHP Acetates"

This is a sufficiently precise description, but the user of the information may not know the composition of an acetate. If an acetate is a polymer such as polyvinyl acetate, then the appropriate code is 22.04.02. If it is a form of transparent paper, it may be appropriate to code it as paper 22.04.01. Some acetates have frames or strips attached which would make them a composite 22.04.10.

Solution:

Think of how the waste will be disposed of - incineration, landfill, recycling etc, and then think of the information needed to make that decision. Seek information about the nature of an acetate from the manufacturer or from literature.

iii) "Printer Ink Cartridge"

Such cartridges are of plastic construction with metal fittings and dried or trace ink inside. The larger ones designed for reuse may not be waste, but will be 23.05.03 if handled as waste. Smaller cartridges will be waste. It is unlikely that one or a few cartridges will be coded as such. Whole loads from industrial or commercial premises should be coded contaminated containers, not cleanable (24.05.02), main component plastic 22.04.02, detail ink 29.04.00 as appropriate.

Solution:

The exact nature of the waste must be provided by the producer. If loads of cartridges are being disposed of, then it is worth establishing the proportions of the component materials. If small numbers are in a mixed waste stream the appropriate mixed waste code 22.09.02/03 would be used.

ANNEX 1

The Standard Industrial Classification of Economic Activities (SIC) 1992

ANNEX 2

Codes for the Classification of Waste Composition

ANNEX 2

Codes for the Classification of Waste Composition

A1.1 The Waste Composition Categories and Codes

This section presents the waste composition categories and codes.

The waste categories themselves, with examples of inclusions and exclusions, should be largely self-explanatory, and section 3.5 of this guidance should help to identify the correct category for a waste. Each category here is followed by notes intended to supplement, where necessary, that other advice. The notes are not intended to be comprehensive -they are provided only where the listings, the guidance in section 3 and the examples in Section 7 may still require amplification.

A1.2 Index to the First Level Categories

	Category	Page No.
210000	Inert	A2.5
220000	General and biodegradable	A2.11
230000	Metals and discarded (scrap) composite equipment	A2.21
240000	Contaminated general	A2.29
250000	Healthcare risk wastes	A2.37
260000	Asbestos	A2.43
270000	Mineral wastes and residues from thermal processes not listed elsewhere	A2.49
280000	Inorganic chemical	A2.57
290000	Organic chemical	A2.67
300000	Mixed chemical "smalls"	A2.77
310000	Radioactive	A2.83
320000	Explosives	A2.89

Category 21: Inert

21.00.00 INERT

The wastes listed below excluding materials from categories 22.00.00 - 32.00.00, other than:

- steel reinforcement in concrete
- compounds listed in 28.06.00

21.01.00 Naturally occurring rocks and sub-soils (excluding those specified in higher categories)

21.01.01	Rock and stone	<u>Including</u> - sand, gravel, sandstone, limestone, crushed stone, china clay sand. Clean building or demolition stone such as sandstone, limestone or slate.	<u>Excluding</u> - mining wastes (27.06.00), contaminated materials (24.01.00)
21.01.02	Sub-soils	<u>Including</u> - clays	<u>Excluding</u> - organic soils such as topsoil (22.01.01) or peat (22.01.03), contaminated materials (24.01.00)

21.02.00 Ceramic and/or cemented materials

21.02.01	Glass	<u>Including</u> - fritted enamel	<u>Excluding</u> - glass fibre (21.03.04), glass reinforced plastic (GRP) (22.04.02)
21.02.02	Ceramics	<u>Including</u> - bricks, tiles, clay ware, pottery, china, bricks and mortar	<u>Excluding</u> - bricks with plaster (22.02.01)
21.02.03	Concrete and/or mortar	<u>Including</u> - concrete, reinforced concrete, concrete blocks, breeze blocks, thermalite blocks	<u>Excluding</u> - unused cement (27.07.00), concrete washings (27.07.00) blocks with plaster (22.02.01)

21.03.00 Processed/prepared mineral materials which have not been used or contaminated

21.03.01	Moulding sands and/or clays		<u>Excluding</u> - sands containing organic binders (24.02.01)
21.03.02	Clay absorbents	<u>Including</u> - fuller's earth, bentonite	
21.03.03	Other mineral absorbents		<u>Excluding</u> - sawdust (22.06.02), plastic (22.04.02)
21.03.04	Man-made mineral fibres (MMMFs)	<u>Including</u> - glass fibre	<u>Excluding</u> - glass reinforced plastic (GRP) (22.04.02), asbestos (26.01.00)

21.03.05 Silica

21.03.06 Mica

21.03.07 Abrasives

21.04.00 Mixed category 21 wastes

Including - mixtures of materials listed in 21.01.00 -
21.03.07

**21.05.00 Water containing category 21
materials**

Including - water with suspended solids consisting of
21.01.00 -21.04.00

Category 21: Inert

Category 21 lists materials which pose little risk to the environment and which are unlikely to break down in a landfill site. For this reason, Category 21 has been labelled “inert”, although the wastes are not inert in the strict chemical sense, nor are they entirely free from health risk: some may be dangerous in the form of an airborne dust.

Notes

Category 21.01.01 includes natural rock which has been used without altering its form or chemical composition, for example building stone or roof slates.

It also includes rocks from quarrying or mining when these pose insignificant risks to the environment. For example, a clay would be category 21.01.02. Mudstone containing pyrite would be category 27.06.

Category 21.03 should be used for prepared materials such as abrasives and absorbents which have not been used and are therefore clean. These are materials which are normally contaminated when put to their intended use, and then would be coded with category 24.

Category 21 may contain:

- reinforcing wire embedded in concrete
- materials in the lower-rate landfill tax group 6 (see cat 28.06)

In all other cases, if the waste is mainly category 21, but contains materials from other categories, then it will be category 22 or 24 waste. Flowchart 2 on page 8 will be helpful in classifying such wastes.

Category 22: General and Biodegradable

22.00.00 GENERAL AND BIODEGRADABLE

The materials listed below provided that, with the exception of 22.09.01, they contain no materials from categories 24.00.00, 25.00.20, 27.00.00, 28.01.00 - 28.05.00, 28.07.00 - 28.09.00, 29.00.00, 30.00.00, 31.00.00, 32.00.00

22.01.00 Naturally occurring rocks and soils containing organic matter

Excluding - contaminated material (24.01.00)

22.01.01 Uncontaminated topsoil

22.01.02 Uncontaminated peat

22.01.03 Uncontaminated silt and dredgings

Excluding - dredged clean sand, gravel, clay or rock (21.01.01)

22.01.04 Coal

Excluding - colliery spoil (27.06.00)

22.02.00 Construction and/or demolition waste

Excluding - separate items listed elsewhere, e.g. bricks (21.02.02), metal (23.00.00), plasterboard (22.03.00), contaminated materials (e.g. with asbestos (26.00.00) or chemicals (24.00.00))

22.02.01 Mixed construction and demolition waste

22.02.02 Asphalt, bitumen and/or coated roadstone

Excluding - asphalt roofing felt (22.02.01)

22.02.03 Streetworks waste

Including - mixtures of soils, subsoils, roadstone, asphalt, bitumen, pipework

22.03.00 Plaster and/or plasterboard

Excluding - other waste calcium sulphate (28.06.03)

22.03.01 Plaster

Including - bricks or blocks with plaster

22.03.02 Plasterboard

22.04.00 Separate materials	<u>Including</u> - the listed materials, either produced separately or segregated from mixed waste	<u>Excluding</u> - separate materials listed elsewhere e.g. glass (21.02.01), greenwaste (22.06.03), metals (23.00.00)
22.04.01 Paper and/or card		
22.04.02 Plastics and polymers	<u>Including</u> - fully polymerised plastics and resins. Glass reinforced plastic (GRP)	<u>Excluding</u> - paints (29.02.00), sealants (29.03.00), adhesives (29.03.00), unreacted resins and hardeners (29.12.00), ion exchange resins (24.02.05)
22.04.03 Rubber		<u>Excluding</u> - tyres
22.04.04 Tyres		
22.04.05 Synthetic textiles		
22.04.06 Mixed/unidentified textiles		<u>Excluding</u> - asbestos textiles (26.00.00), separate vegetable fibres (22.06.01), separate animal fibres (22.07.02), synthetic textiles (22.04.05)
22.04.07 Wood	<u>Including</u> - tree trunks and branches and any attached bark, prepared but untreated timber	<u>Excluding</u> - sawdust, shavings (22.06.02), stripped bark (22.06.04), chipped or shredded branches (22.06.02), coated or chemically treated timber (22.04.08).
22.04.08 Coated or chemically treated timber.(N.B. If in doubt, assume the wood is treated.)	<u>Including</u> - painted or varnished timber, timber treated with organic or inorganic preservatives, power station cooling tower timbers.	<u>Excluding</u> - stripped bark (22.06.04), sawdust, shavings (22.06.02)
22.04.09 Laminates	<u>Including</u> - laminates of plastic, wood, glass, textile	<u>Excluding</u> - coated paper and cardboard (22.04.10), laminates of metal (23.00.00), laminates with asbestos (26.00.00)
22.04.10 Composites		<u>Excluding</u> - laminates (22.04.09)
22.05.00 Co-mingled materials separated for recycling	<u>Including</u> - source segregated co-mingled wastes. Use other codes to specify details.	

22.06.00 Vegetable matter

22.06.01	Vegetable fibres	<u>Including</u> - cotton, jute, hemp, cotton textiles	
22.06.02	Sawdust, shavings and/or wood pulp	<u>Including</u> - chipped or shredded branches	
22.06.03	Vegetation and/or vegetable waste	<u>Including</u> - "green waste", small twigs	<u>Excluding</u> - timber and branches (22.04.07)
22.06.04	Bark		
22.06.05	Mixtures of vegetation, soil and/or stones	<u>Including</u> - mixed garden or site clearance waste	<u>Excluding</u> - waste containing other materials e.g. plastic (22.02.01 or 22.09.00)
22.06.06	Vegetable food	<u>Including</u> - waste food excluding animal matter but containing vegetable fats and oils	<u>Excluding</u> - waste food containing animal matter (22.07.03), vegetable fats and oils (22.08.01)
22.06.07	Composted material		<u>Excluding</u> - compost rejects (22.09.00)

22.07.00 Animal matter

22.07.01	Leather		<u>Excluding</u> - uncured skins (22.07.04)
22.07.02	Animal fibres	<u>Including</u> - wool, horsehair, woollen textiles	
22.07.03	Waste food - animal or mixed	<u>Including</u> - waste food which contains animal matter, canteen waste	
22.07.04	Whole and/or part animals	<u>Including</u> - blood, uncured skins, bones, dead animals, fleshings, dead fish, bonemeal	<u>Excluding</u> - leather (22.07.01), hair (22.07.02), waste from veterinary care (25.02.01), human parts (25.02.01)
22.07.05	Excreta	<u>Including</u> - washing or processing liquors contaminated with blood and or excrement. Dog faeces	<u>Excluding</u> - human excreta (22.10.00), waste from health care (25.02.03)
22.07.06	Sanitary wastes	<u>Including</u> - disposable nappies, feminine sanitary waste	<u>Excluding</u> - wastes from healthcare (25.02.00)

22.08.00 Animal or vegetable oil, fat, wax, grease

22.08.01 Vegetable oils, fats, waxes and/or grease Excluding - all other oils (29.10.00)

22.08.02 Animal fats, oils, waxes and/or grease Including - fish oil, tallow

22.08.03 Soap Excluding - detergents (29.08.01)

22.08.04 Animal glue Excluding - other adhesives (29.03.00)

22.09.00 Household, and/or similar commercial and/or industrial waste

Including - mixtures of materials from categories 21.00.00 - 23.00.00

Excluding - segregated or separate items, e.g. paper (22.04.01), wood (22.04.07), paint (29.02.00), pesticides (29.15.00)

Mixtures whose main bulk comprises materials from categories 24.00.00 - 32.00.00 (24.00.00 - 32.00.00)

22.09.01 Household Excluding - civic amenity waste (22.09.04) separately collected bulky household waste (22.09.04), garden waste (22.06.05)

22.09.02 Commercial Including - mixed waste from offices

22.09.03 Industrial Excluding - canteen waste

22.09.04 Civic amenity waste Including - separately collected bulky household waste

22.09.05 Street sweepings and litter Excluding - fly-tipped materials (as material e.g. commercial waste (22.09.02), cars (23.04.03), white goods (23.04.01), garden waste (22.06.05)); separately collected dog faeces (22.07.05)

22.09.06 Any mixtures of materials from 22.09.01 - 22.09.05

22.10.00 Sewage

- 22.10.01 Sewage Including - septic tank and/or cesspool contents
- 22.10.02 Untreated sewage sludge
- 22.10.03 Treated sewage sludge
- 22.10.04 Sewage screenings

22.11.00 Waste from biological processes other than sewage treatment or composting

- 22.11.01 Residues of fermentation and other similar microbiological production processes Including - biomass and liquor from production of pharmaceuticals, beer, vinegar and food products Excluding - pharmaceuticals (29.14.00)
 - 22.11.02 Wastes from biological treatment of effluents or wastes Including - biological sludges from treatment of effluents from food industry, brewing, slaughtering; liquor from anaerobic digestion of solid wastes. Excluding - sludges from physico-chemical treatment (classify as chemical composition), untreated settled solids (as material), sewage sludge (22.10.02/03)
 - 22.11.03 Landfill leachate Including - leachate from landfills where biodegradable household, commercial and/or industrial waste is deposited. Excluding - leachate from monofills (24.10.02)
-

Category 22: General and Biodegradable

This category consists of wastes (other than wastes that are more aptly described in categories 23 - 32) with significant potential for water pollution and/or (by virtue of their biodegradable content) landfill gas generation or which will burn.

It also contains many of the wastes found in household or similar commercial and industrial waste (including construction waste) both as separate items and as mixed wastes.

The average household dustbin contains many things which could be classified separately: ink, pharmaceuticals, glass, even toxic metals (in some batteries) and pesticides (eg fly spray)! However, this is still classified as household waste unless the waste is sorted, or is the product of a business, not a household.

This category also contains mixed construction and demolition waste. Remember that many of the materials likely to make up this waste (such as glass, bricks, concrete and mortar etc) have their own codes which will of course give a more accurate description of the waste.

Notes

Category 22.03 is for plaster and plasterboard, whether from production of those materials or subsequent use.

Categories 220407 and 220408 distinguish between wood in its natural state and wood which has been coated or chemically treated. Where it is not known whether the wood has been treated, 22.04.08 should be used. "Untreated" means "without coatings or preservatives".

"Green waste" would normally comprise plant leaves and twigs and should be coded 22.06.03. If it contains significant amounts of soil-where for example a site has been cleared by scraping off the soil layer and vegetation, then it should be coded 22.06.05.

**Category 23: Metals and discarded (scrap) composite
equipment**

23.00.00 METALS AND DISCARDED (SCRAP) COMPOSITE EQUIPMENT

The following materials, which may contain wastes from other categories, whose presence should be shown by the use of detail and property codes as appropriate.

23.01.00 Ferrous metal

Excluding - metal compounds (28.00.00)

23.01.01 Mixed ferrous metal

23.01.02 Iron

23.01.03 Steel

Including - special steels

23.02.00 Non-ferrous metal

Excluding - metal compounds (28.00.00), metal catalysts (23.03.00), special steels (23.01.03), highly reactive metals (28.03.00)

23.02.01 Lead

23.02.02 Copper

23.02.03 Zinc

23.02.04 Tin

23.02.05 Aluminium

23.02.06 Mercury

23.02.07 Other toxic metals

23.02.08 Precious metals

Including - gold, silver, platinum

23.02.09 Other non-ferrous metal elements

23.02.10 Dental amalgam

23.02.11 Alloys

23.02.12 Mixed/unknown non-ferrous

23.02.13 Mixed ferrous and non-ferrous metal

Including - empty aerosol cans

Excluding - full or part-full aerosols (as contents)

23.03.00 Metal catalysts

Excluding - metal compounds (28.00.00)

23.04.00 Composite, mainly metallic equipment

- | | | | |
|----------|--|---|--|
| 23.04.01 | White goods | <u>Including</u> - fridges, cookers, washing machines, tumble dryers | |
| 23.04.02 | Other domestic appliances | <u>Including</u> - toasters, kettles, vacuum cleaners | <u>Excluding</u> - lamp bulbs (23.05.02), TVs (23.05.01) |
| 23.04.03 | Vehicles and/or metal vehicle parts | <u>Including</u> - cars, lorries, military vehicles, asbestos vehicle brake shoes | |
| 23.04.04 | Aircraft, ships, railway locomotives, heavy industrial equipment | | |
| 23.04.05 | Cable and/or wire | | |
| 23.04.06 | Other | <u>Including</u> - bicycles, shopping trolleys, guns, metal furniture | |
-

23.05.00 Mainly non-metallic equipment

- | | | | |
|----------|----------------------|---|---|
| 23.05.01 | Electronic equipment | <u>Including</u> - computers, microwaves, TV's | |
| 23.05.02 | Light bulbs | <u>Including</u> - fluorescent tubes, street lamp bulbs | <u>Excluding</u> - lamp structural material |
| 23.05.03 | Other | <u>Including</u> - discharged airbags | |
-

23.06.00 Batteries

- | | | |
|----------|-------------------------------|--|
| 23.06.01 | Undrained lead-acid batteries | |
| 23.06.02 | Drained lead-acid batteries | |
| 23.06.03 | Nickel-cadmium | |
| 23.06.04 | Mercuric oxide | |
| 23.06.05 | Zinc-carbon | |

- 23.06.06 Zinc-chloride
 - 23.06.07 Alkaline manganese
 - 23.06.08 Silver oxide
 - 23.06.09 Lithium
 - 23.06.10 Zinc-air
 - 23.06.11 Nickel Hydride
 - 23.06.12 Other
-

Category 23: Metals and discarded (scrap) composite equipment

Category 23 is intended for wastes which might be produced or processed by the metal recycling industry. It includes “composite” equipment ie equipment which consists of a number of different materials fixed together, and which therefore must be broken up before the materials are sorted. Equipment that consists of only one material - such as a steel filing cabinet - can easily be coded using the appropriate single metal codes in this category.

Notes

Metal

Codes are provided for a variety of metals, mixtures of metals and alloys. These codes should be used only for metals, regardless of their physical form, but not for metal compounds, which should be coded within category 28. The more unusual non-ferrous metals should be coded 23.02.07/08 “other”. The exceptions are the highly reactive metals such as sodium and potassium, which are within category 28.03.

Specific Industry Classification of Form

The metals industry classifies many different forms of its product: rods, sheets, wire, ingots etc by the use of names such as Berry, Birch, Candy etc. If this information is required then the form code (F1-F6) may be extended by the addition of the industry classification.

Metal Powders

Metal powders can be hazardous; this can be recognised by adding the H15 “Difficult Property” code.

Equipment Containing Chemicals

Some items of equipment (eg fridges, batteries, transformers) contain chemicals. Normally, these chemicals would be coded elsewhere. However, for equipment code the entire waste under the appropriate Cat 23 code, and add the chemical description as detail code.

Category 24: Contaminated general wastes

24.00.00 CONTAMINATED GENERAL WASTES

The following wastes, having a matrix comprising category 21.00.00 and 22.00.00 materials, but contaminated with other materials from categories 25.00.00, 26.00.00, 27.00.00, 28.01.00 - 28.05.00, 28.07.00 - 28.09.00, 29.00.00, 30.00.00, 31.00.00, 32.00.00

This category does not include waste that may be described as "contaminated" by specific sectors of industry where this contamination is due to the presence of another material of a general nature (for example, paper for recycling "contaminated" with a plastic coating).

Category 21.00.00 wastes containing category 22.00.00 or 23.00.00 materials would be classified as mixed waste within 22.01.01 or 22.09.00 as appropriate.

24.01.00 Contaminated soil and subsoil etc

- 24.01.01 Contaminated topsoil
 - 24.01.02 Contaminated clay subsoils
 - 24.01.03 Contaminated granular friable subsoils
 - 24.01.04 Contaminated dredgings
 - 24.01.05 Contaminated silts Including - silt from interceptors, road gullies; sewage treatment grit
 - 24.01.06 Railway ballast
-

24.02.00 Used moulds, muds, filter materials etc

- 24.02.01 Used moulds and/or moulds containing organic binders
 - 24.02.02 Drilling muds Including - oil-contaminated drilling muds
 - 24.02.03 Used absorbents and/or filter aids Including - sawdust, fullers earth, bentonite, activated carbon
 - 24.02.05 Used ion exchange resins Including - resins from water and waste treatment
 - 24.02.06 Used linings and/or refractories
-

24.03.00 Residues from abrasive processes Including - dusts from local exhaust ventilation of abrasive processes.

24.03.01 Grinding residues

24.03.02 Shotblasting residues

24.03.03 Descaling residues

Excluding - residues produced as a result of chemical descaling

24.04.00 Contaminated construction and/or demolition waste

Excluding - construction and/or demolition waste containing asbestos (fibrous: 26.01.06, bonded: 26.02.05)

24.05.00 Contaminated containers, and other packaging

24.05.01 Cleanable

Including - bottles or drums from which the contaminant may be readily removed.

24.05.02 Not cleanable

Including - paper or plastic sacks from which it would not be practicable to separate the contaminant.

24.06.00 Contaminated category 22.04.00 - 22.09.00 wastes

Including - contaminated floor sweepings

24.07.00 Fragmentation Residues

Including - "fluff" or "frag" from metal fragmentation plants

24.08.00 Contaminated vegetable and/or animal matter

Including - tannery waste containing chromium salts

24.09.00 Contaminated sewage and/or biological treatment sludges

Including - sewage containing oil

24.10.00 Contaminated water

Excluding - leachate other than from monofill

24.10.01 Water with immiscible contamination Including - yard drainage with trace oil

Excluding - oil/water mixture from spillage (29.10.07), water with only category 21.00.00 suspended solids (21.05.00)

24.10.02 Water with soluble inorganic chemical contamination Including - leachate from monofill

24.10.03 Water with soluble organic chemical contamination

24.10.04 Water with mixtures of the above contaminants

Category 24: Contaminated general wastes

Check flowchart 2 on page 8 if you are unsure as to whether a waste is contaminated.

Notes

Abrasive Processes

Waste from abrasive processes - such as grinding or shotblasting - should always be assumed to be contaminated, even if they do not appear to be so. Code them under category 24.03.

Contaminated Water

As stated in para 3.5.1, water should be ignored when classifying most wastes. However, when the water involved is only very lightly contaminated - such as yard drainage or cooling water - then it is easier to code the waste as contaminated water under category 24.10.

Category 25: Healthcare risk wastes

25.00.00 HEALTHCARE RISK WASTES

Wastes from human and animal (i.e. veterinary) healthcare excluding wastes similar to household wastes. Human healthcare premises include hospitals, dentists, mortuaries, undertakers, post-mortem rooms, tattoo parlours, chiropodists. Risk wastes from microbiology laboratories outside healthcare.

25.01.00 Risk waste

Excluding - pharmaceuticals (29.14.00)

25.01.01 Sharps

25.01.02 Infectious waste

Including - infected tissues, dressings, excreta, samples, cultures.

25.02.00 Waste containing tissue and body fluids

Excluding - infectious waste (25.01.02), nappies (22.07.06), feminine sanitary waste (22.07.06)

25.02.01 Tissue

Including - organs, body parts, blood, animal carcasses, teeth and nails

25.02.02 Dressings

Including - swabs, bandages

25.02.03 Healthcare excreta

Including - faeces, urine, mucus, used stoma bags, incontinence pads, animal bedding

25.03.00 Sterilised waste

25.03.01 Autoclaved waste

Including - wastes of categories 25.01.02 and/or 25.02.00 which have been sterilised

Excluding - sharps (25.01.01)

25.03.02 Other sterilised waste

Category 25: Healthcare risk wastes

This category is used for wastes from human and animal healthcare premises or from microbiological laboratories. It excludes normal household type waste produced at such facilities.

Notes

Biohazardous waste which has been sterilised is still included in this category. It is coded under 25.03.

Feminine hygiene waste is coded under 22.07.06.

Category 26: Asbestos waste

26.00.00 ASBESTOS WASTE

Any waste containing asbestos.

26.01.00 Fibrous asbestos

Including - asbestos ropes, blankets, hoses, clothing

- 26.01.01 Crocidolite
 - 26.01.02 Amosite
 - 26.01.03 Chrysotile
 - 26.01.04 Other
 - 26.01.05 Unidentified
 - 26.01.06 Construction and demolition waste containing fibrous asbestos
-

26.02.00 Bonded asbestos

- 26.02.01 Cement bonded
 - 26.02.02 Resin bonded
 - 26.02.03 Rubberised
 - 26.02.04 Other
 - 26.02.05 Construction and demolition waste containing bonded asbestos
-

Excluding - vehicle brake linings

Category 26: Asbestos waste

All wastes containing asbestos (except vehicle brake shoes) should be assigned to category 26. This includes construction or demolition waste containing significant amounts of bonded asbestos; for such wastes there will be a point where the bonded asbestos content is too insignificant to consider the waste as asbestos waste. This must be a matter for individual judgement of the waste, in the light of the Duty of Care, having regard to

- the quantity of the bonded asbestos
- the extent to which bonded asbestos is broken and potentially releasing fibres
- the scope for removal and segregation of the asbestos.

Category 27: Mineral wastes and residues from thermal processes not listed elsewhere

27.00.00 MINERAL WASTES AND RESIDUES FROM THERMAL PROCESSES NOT LISTED ELSEWHERE

The following materials:

27.01.00 Slag from primary metal production Including - fused and insoluble residues from thermal processing of minerals.

- 27.01.01 Blast furnace slag
- 27.01.02 Basic oxygen steel-making slag
- 27.01.03 Electric arc steel-making slag
- 27.01.04 Aluminium slag
- 27.01.05 Zinc/lead slag
- 27.01.06 Copper slag
- 27.01.07 Tin slag

27.02.00 Drosses from secondary metal production

- 27.02.01 Lead dross
- 27.02.02 Aluminium dross
- 27.02.03 Zinc dross
- 27.02.04 Tin based drosses
- 27.02.05 Copper based drosses
- 27.02.06 Magnesium drosses

27.03.00 Vitrified wastes Including - vitrified slag from HWI

27.04.00 Bottom ash and/or clinker

- 27.04.01 Bottom ash from coal and/or wood combustion
- 27.04.02 Bottom ash from other fossil fuel combustion Including - bottom ash from burning Orimulsion Excluding - ash from combustion of refuse derived fuel (RDF) (27.04.03)

27.04.03	Bottom ash from municipal waste and clinical waste incineration	<u>Including</u> - bottom ash from RDF combustion	
27.04.04	Bottom ash from hazardous waste incinerators		
27.04.05	Bottom ash from sewage and/or sewage sludge incineration		
27.05.00	Fly ash and/or other stack and/or stack gas cleaning residues	<u>Including</u> - liquors from scrubbing particulates	<u>Excluding</u> - liquors from scrubbing gases (28.00.00), absorbents (24.02.03) linings and/or refractories (24.02.06)
27.05.01	Fly ash and fly ash sludges from coal combustion (Pulverised Fuel Ash) or wood combustion		
27.05.02	Fly ash and fly ash sludges from other fossil fuel combustion		
27.05.03	Fly ash and fly ash sludges from municipal or clinical waste incineration		
27.05.04	Fly ash and fly ash sludges from hazardous waste incinerators		
27.05.05	Fly ash and fly ash sludges from sewage and/or sewage sludge incineration		
27.05.06	Flue dust		
27.06.00	Mineral extraction and/or processing wastes with the potential for solubilisation of heavy metals, inorganic halogen compounds, sulphur, phosphorus or nitrogen compounds.	<u>Including</u> - colliery spoil	
27.07.00	Cement	<u>Including</u> - unused cement, concrete plant washings	<u>Excluding</u> - concrete (21.02.03), used cement (21.02.03), mortar (21.02.03)

Category 27: Mineral wastes and residues from thermal processes not listed elsewhere

This category basically consists of ashes, slags, drosses and similar wastes. It excludes inert building materials such as glass, bricks or ceramics, but does include wastes from non-thermal processes which have a strong potential for pollution.

Notes

Some mineral wastes such as colliery spoil or wastes from certain metal ores can cause severe pollution to groundwater. These wastes therefore have their own special category - 27.06. Assume these wastes are polluting and code them under 27.06 unless you have good reason to think otherwise. If at all possible, specify the polluting substance in the waste with a detail code.

Category 28: Inorganic chemical wastes

28.00.00 INORGANIC CHEMICAL WASTES

The following list of wastes. Category 28.00.00 codes should also be used to indicate the presence of inorganic chemicals in other wastes e.g. category 23.00.00, 24.00.00, 27.00.00, 29.00.00, 30.00.00.

28.01.00 Inorganic acids

- 28.01.01 Sulphuric acid
- 28.01.02 Sulphurous acid
- 28.01.03 Nitric acid
- 28.01.04 Nitrous acid
- 28.01.05 Chromic acid
- 28.01.06 Phosphoric acid
- 28.01.07 Phosphorous acid
- 28.01.08 Hydrofluoric acid
- 28.01.09 Fluoroboric acid
- 28.01.10 Hydrochloric acid
- 28.01.11 Other
- 28.01.12 Mixed inorganic acids (use detail box to specify)

28.02.00 Inorganic alkalis

- 28.02.01 Sodium oxide
- 28.02.02 Sodium hydroxide
- 28.02.03 Sodium carbonate
- 28.02.04 Potassium oxide
- 28.02.05 Potassium hydroxide
- 28.02.06 Potassium carbonate

- 28.02.07 Calcium oxide
- 28.02.08 Calcium hydroxide
- 28.02.09 Ammonium hydroxide solution
- 28.02.10 Other

28.03.00 Highly reactive elements

- 28.03.01 Potassium
- 28.03.02 Sodium
- 28.03.03 Magnesium
- 28.03.04 Calcium
- 28.03.05 Lithium
- 28.03.06 Phosphorus
- 28.03.07 Osmium
- 28.03.08 Other

28.04.00 Other elements

- 28.04.01 Boron
- 28.04.02 Sulphur
- 28.04.03 Other

Excluding - category 28.03.00, category 23.00.00 metals, carbon (29.01.00)

Excluding - category 28.03.00, category 23.00.00 metals, carbon (29.01.00)

28.05.00 Gases

- 28.05.01 Chlorine
- 28.05.02 Fluorine
- 28.05.03 Sulphur dioxide
- 28.05.04 Nitrous oxide

Including - use to indicate contents of cylinders (23.00.00) or solutions

Excluding - CFCs etc. (29.11.00)

- 28.05.05 Oxygen
- 28.05.06 Hydrogen
- 28.05.07 Carbon dioxide
- 28.05.08 Ammonia
- 28.05.09 Bromine
- 28.05.10 Other

28.06.00 Specific low solubility inorganic compounds

Including - the specified compounds only

- 28.06.01 Titanium dioxide
- 28.06.02 Calcium carbonate
- 28.06.03 Calcium sulphate
- 28.06.04 Barium sulphate
- 28.06.05 Calcium fluoride
- 28.06.06 Magnesium carbonate
- 28.06.07 Magnesium oxide
- 28.06.08 Magnesium hydroxide
- 28.06.09 Ferric oxide
- 28.06.10 Ferric hydroxide

28.07.00 Specific soluble inorganic compounds

Including - the specified compounds only

- 28.07.01 Magnesium sulphate
- 28.07.02 Calcium chloride
- 28.07.03 Ferric chloride
- 28.07.04 Sodium chloride

28.08.00 Hazardous Waste Directive annex II compounds

Including - where waste contains cations and anions listed here, please specify all.

Excluding - elemental metals (23.01.00, 23.02.00, 23.03.00,28.03.00), acids (28.01.00), alkalis (28.02.00), gases (28.05.00), listed salts (28.06.00 and 28.07.00) but use to specify detail e.g. metal salts in a waste acid. Waste explosives as defined in category 32.00.00.

- 28.08.01 Beryllium compounds
- 28.08.02 Vanadium compounds
- 28.08.03 Chromium (VI) compounds
- 28.08.04 Cobalt compounds
- 28.08.05 Nickel compounds
- 28.08.06 Copper compounds
- 28.08.07 Zinc compounds
- 28.08.08 Arsenic compounds
- 28.08.09 Selenium compounds
- 28.08.10 Silver compounds
- 28.08.11 Cadmium compounds
- 28.08.12 Tin compounds
- 28.08.13 Antimony compounds
- 28.08.14 Tellurium compounds
- 28.08.15 Barium compounds
- 28.08.16 Mercury compounds
- 28.08.17 Thallium compounds
- 28.08.18 Lead compounds
- 28.08.19 Inorganic sulphides
- 28.08.20 Inorganic fluorine compounds
- 28.08.21 Inorganic cyanides

28.08.22 Phosphorus compounds
(excluding mineral phosphates)

28.08.23 Metal carbonyls

28.08.24 Peroxides

28.08.25 Chlorates

28.08.26 Perchlorates

28.08.27 Azides

**28.09.00 Other inorganic compounds (use
chemical formulae to specify)**

Including – inorganic compounds not specified at
28.01.00, 28.02.00, 28.05.00, 28.06.00, 28.07.00,
28.08.00 e.g. magnesium chloride.

Category 28: Inorganic chemical wastes

Category 28 is provided for waste whose main bulk (excluding water) is an inorganic chemical.

Wastes are frequently mixtures of inorganic and organic chemicals, with water and sometimes with absorbents or filter aids:

- Decide what is the main component, discounting water. Categorise that as the main code, and show the other components as details.

Notes

Metals

The only metals categorised here are the extremely reactive metals coded under 28.03; otherwise, use category 23.

Gas Cylinders

Use category 28.05 to code gas in cylinders or in other forms of container.

Effluent Treatment Wastes

Some wastes are named after the effluent treatment process that produces them - eg filter cake sludge, flue gas waste, effluent treatment sludge etc, but their main component will generally be known,

for example, an effluent sludge might be calcium sulphate. for that reason, generic names for inorganic chemical wastes have been removed from the system, and the waste should be coded according to its chemical name:- in the above case, calcium sulphate. Not all effluent sludges or filter cakes will be chemical wastes, if a category 28 or 29 chemical is not their main component. For example, a sludge from flocculation of paper fibres would be 22.06.02 and a biological treatment sludge would be 22.11.

Category 29: Organic chemical wastes

29.00.00 ORGANIC CHEMICAL WASTES

The following list of wastes. Such wastes may also contain material from category 28.00.00 whose presence should be indicated by the use of detail and property codes as appropriate. Category 29.19.00 should also be used to indicate the presence of specific types of organic chemical.

29.01.00 Carbon Including - carbon black, activated carbon, carbon fibre Excluding - coal (22.01.04), used absorbents (24.02.03), gunpowder (32.00.00)

29.02.00 Paint, varnish and/or lacquers

29.02.01 Aqueous

29.02.02 Solvent- or oil- based

29.03.00 Synthetic adhesives and/or sealants

Excluding - animal glue (22.08.04)

29.04.00 Inks

29.04.01 Aqueous

29.04.02 Solvent based

29.05.00 Pigments

29.06.00 Dye stuffs

29.07.00 Cosmetics

29.08.00 Surfactants and/or chelating agents

29.08.01 Detergents and/or surfactants

29.08.02 Chelating agents

29.09.00 Organic household products not elsewhere specified

Including - waxes, polishes

Excluding - oils (29.10.00), detergents (29.08.00), pesticides (29.15.00), pharmaceuticals (29.14.00), paint (29.02.00), inorganic products (28.00.00), adhesives (29.03.00), animal glue (22.08.04)

29.10.00 Mineral and synthetic oil waste

29.10.01 Lubricating and/or fuel oil

29.10.02 Mixed/unidentified oil

- 29.10.03 Grease
- 29.10.04 Hydraulic oil and/or fluids Including - brake fluid
- 29.10.05 Insulating oil
- 29.10.06 Machining/cutting/cooling oils Excluding - emulsions (29.10.07)
- 29.10.07 Oil sludges and/or oil water mixtures Including - sludges from oil or petrol tank cleaning oil/water mixtures from spillages and interceptors
Machining/cutting/cooling oil emulsion

29.11.00 Halogenated refrigerants, aerosol propellants and/or foaming gases Including - CFCs, HFCs, HCFCs

29.12.00 Monomers and precursors

- 29.12.01 Isocyanates
- 29.12.02 Vinyl acetate
- 29.12.03 Methyl methacrylate
- 29.12.04 Styrene
- 29.12.05 Vinyl chloride monomer
- 29.12.06 Other

29.13.00 Tarry wastes

- 29.13.01 Distillation residues
- 29.13.02 Solvent and/or other waste distillation residues
- 29.13.03 Coal tars Including - creosotes
- 29.13.04 Acid tars
- 29.13.05 Other tars

29.14.00 Pharmaceuticals Excluding - wholly inorganic pharmaceuticals (28.00.00)

29.15.00 Organic biocides Excluding - wholly inorganic biocides (28.00.00)

- 29.15.01 Organophosphorus pesticides Including - organophosphorus insecticides, rodenticides, acaricides, slimicides
- 29.15.02 Organochlorine pesticides Including - organochlorine insecticides, rodenticides, acaricides, slimicides
- 29.15.03 Other pesticides Including - insecticides, rodenticides, acaricides, slimicides
- 29.15.04 Herbicides
- 29.15.05 Fungicides
-

29.16.00 Organometallics

- 29.16.01 Tetraethyl Lead
- 29.16.02 Tetramethyl lead
- 29.16.03 Other
-

29.17.00 Organic chemical wastes not specified in 29.01.00 - 29.16.00

Excluding - 29.01.00 - 29.16.00 but may be used to specify detail of 29.01.00 - 29.16.00 Waste explosives (32.00.00)

- 29.17.01 Organic acids and/or derivatives
- 29.17.02 Aliphatic hydrocarbon
- 29.17.03 Aromatic hydrocarbon
- 29.17.04 Polycyclic compounds
- 29.17.05 Heterocyclic compounds
- 29.17.06 Phenols, analogues and derivatives
- 29.17.07 Peroxides
- 29.17.08 Nitro-compounds
- 29.17.09 Nitriles
- 29.17.10 Thiocyanates

- 29.17.11 Aliphatic amines and/or amides
- 29.17.12 Aromatic amines and/or amides
- 29.17.13 Ethers
- 29.17.14 Other oxygen containing compounds Including - alcohols, Aldehydes, Ketones Excluding - PCDDs, PCDFs
- 29.17.15 PCBs and/or analogues
- 29.17.16 Any congener of polychlorinated dibenzo-furan
- 29.17.17 Any congener of polychlorinated dibenzo-dioxin
- 29.17.18 Other Including - turpentine

29.18.00 Additional codes Including - use to specify detail in other wastes

- 29.18.01 Other halogenated compounds
 - 29.18.02 Organophosphorus compounds
 - 29.18.03 Organosulphur compounds
-

Category 29: Organic chemical wastes

Category 29 is provided for waste whose main bulk (excluding water) is an organic chemical.

Wastes are frequently mixtures of inorganic and organic chemicals, with water and sometimes with absorbents or filter aids.

- Decide what is the main component, discounting water. Categorise that as the main code, and show the other components as details.

Notes

Specify a particular chemical wherever possible. For example, if you know that the solvent in a varnish waste is ethyl ethanoate, then quote 29.17.14 as a detail code and specify ethyl ethanoate in the written description.

If the main bulk of the waste is an inorganic chemical - as may well be the case with pharmaceuticals and biocides - then use the appropriate inorganic chemical code (Category 28).

Category 30: Mixed chemical “smalls”

30.00.00 MIXED CHEMICAL "SMALLS"

This category should be used only for mixed loads of small containers (each less than or equal to 2.5 litre) of different chemicals from categories 28.00.00 and 29.00.00 and category 23.02.00 metals or for contaminated laboratory equipment.

30.00.00 Mixed chemical "smalls"

Including - all loads comprising small quantities of a variety of different chemicals, whether inorganic or organic e.g. laboratory chemicals. Contaminated laboratory equipment e.g. test tubes, beakers, distillation apparatus.

Excluding - loads comprising small containers of the same chemical (as appropriate)

Category 30: Mixed chemical “smalls”

Category 30 is provided to cover mixed loads of small containers of different chemicals from categories 28 and 29. An example would be a collection of redundant laboratory chemicals. The category should not be used where the small containers all contain the same chemicals. For example, a pallet of reject cosmetics in retail packages would be 29.07 not 30.

Category 31: Radioactive waste

31.00.00 RADIOACTIVE WASTE

There are no second level headings for this category. All wastes which are radioactive waste within the meaning of the Radioactive Substances Act 1993 would be classified here, and the physical nature of the waste could be described if necessary by use of the other categories and detail codes as appropriate.

31.00.00 Radioactive waste

Excluding - wastes outside the Meaning of the Radioactive Substances Act 1993 (as appropriate)

Category 31: Radioactive waste

Category 31 is provided for wastes which are not controlled wastes because they are radioactive wastes within the meaning of the Radioactive Substances Act 1993.

Such wastes should be assigned to category 31 regardless of the composition, chemical or otherwise, of the waste. Should it prove necessary to use the classification scheme for such wastes, then the composition and properties other than radioactive can be shown by the use of the appropriate detail codes.

Category 32: Explosives

32.00.00 EXPLOSIVES

This category should be used only for substances which are explosives within the meaning of the Explosives Act 1875. Any other explosive waste should be coded using categories 8 and 9 and the property code "explosive".

32.00.00 Explosives

32.01.00 Primary explosive substance	<u>Including</u> - any material containing greater than 10% explosives.	<u>Excluding</u> - munitions and explosively filled articles (32.05.00)
32.02.00 Propellants	<u>Including</u> - any material containing greater than 10% explosives.	<u>Excluding</u> - munitions and explosively filled articles (32.05.00)
32.03.00 Pyrotechnics compositions and incendiary material	<u>Including</u> - any material containing greater than 10% explosives.	<u>Excluding</u> - munitions and explosively filled articles (32.05.00), fireworks (32.06.00)
32.04.00 Materials containing between 1% and 10% explosives		<u>Excluding</u> - munitions and explosively filled articles (32.05.00), fireworks (32.06.00)
32.05.00 Munitions and explosively filled articles	<u>Including</u> - undischarged airbags	
32.06.00 Fireworks		

Category 32: Explosives

Category 32 is provided for wastes which are not controlled wastes because they are explosive, within the meaning of the Explosives Act 1875.

The term “explosive” in the 1875 Act-

- (1) *Means gunpowder, nitro-glycerine, dynamite, guncotton, blasting powders, fulminate of mercury or of other metals, coloured fires, and every other substance, whether similar to those above mentioned or not, used or manufactured with a view to produce a practical effect by explosion or a pyrotechnic effect; and*
- (2) *Includes fog-signals, fireworks, fuses, rockets, percussion caps, detonators, cartridges, ammunition of all descriptions, and every adaptation or preparation of an explosive as above defined.*

This definition is wide, and the only explosives which are controlled waste will be those which:

- are one of the specific named items such as gunpowder
and
- are produced for purposes other than mentioned.

Such materials are typically produced in experiments or accidentally. On those occasions, because of their explosive property they are usually disposed of on site by chemical reaction or controlled explosion.

Such wastes should be assigned to category 32 regardless of the composition, chemical or otherwise, of the waste. Should it prove necessary to use the classification system for such wastes, then the composition can be shown by the use of the appropriate detail codes.

ANNEX 3

The Waste Index

INTRODUCTION

This waste index is provided to assist in the classification of wastes.

Consultations on the classification scheme revealed a large number of waste descriptions in use in industry. The first column of this index is an alphabetical list of those waste descriptions. The second column provides the appropriate waste composition category code for the waste. The third column may contain reference to a note in cases where assignment of the waste to a category is not straightforward.

The waste holder should be able to look up the normal description of a waste in column one, and then assign the waste to the category shown in column two.

Sections 3.4 and 3.6 of this guidance should be read before a code is chosen from the index.

Column 2 Categories

Column 2 entries will usually show a third level category code. Where a second level code is shown, and that second level has third level codes, then the appropriate third level code should be chosen. For example, in the case of abrasives, used abrasives would be assigned within 24.03. The third level should be selected according to the process in which the abrasives were used. Activated carbon is assigned to second level category 29.01.00 but that has no third levels, so the second level code is used.

In many cases the code shown is only the main code and it will be necessary to specify other details. For example, absorbent and oil is assigned to 24.02.03, but the presence of the oil should be shown by, for example, the 29.10.02 code. Absorbents - halogenated should have details shown from 29.17. and 29.18. The waste holder must decide whether other details should be provided in each case.

Column 3 Notes

In some cases column 3 contains a reference. These are, with their meanings:

Reference	Means
*	May have a definite composition which can be classified, but the consultant is not familiar with the waste composition. For example, "Abaca tow, noils and yarn waste" may be vegetable fibres: 22.06.01.
**	The description is too imprecise to allow classification. For example "acidic carbonaceous material". This could be, for example, acidic sewage sludge, acid tar or activated carbon containing organic acids. Classify according to the main constituent of the waste, and then supply details of the other constituents.

Remember to also classify the detailed composition of the waste

Waste description	Waste code	Notes
A		
Abaca tow, noils and yarn waste		*
Abrasives	210307	
ABS plastics	220402	
Absorbents - oil/fuel (contaminated)	240203	
Absorbents (n/o/s) and oil	240203	
Absorbents n/o/s - halogenated	240203	
Absorbents n/o/s - non-halogenated	240203	
Absorption fridges - electrical	230401	
Absorption fridges - gas powered	230401	
Acetaldehyde	291718	
Acetate - vinyl	291202	
Acetate flake		*
Acetic acid	291701	
Acetic acid anhydride	291701	
Acetone	291714	
Acetyl acid chloride	291701	
Acetylides	291718	
Acid		see individual entries
Acid - acetic	291701	
Acid - monochloroacetic	291701	
Acid alkyl sludge	291304	
Acid anhydrides	291701	
Acid chlorides	291701	
Acid fume		**
Acid tars - inorganic	291304	
Acid tars - organic	291304	
Acid tars n/o/s	291304	
Acidic carbonaceous material		**
Acidic waste - mixed		**
Acids - amino	291701	
Acids n/o/s	280111	**
Acrylamide	291711	
Acrylate copolymers	220402	
Acrylate monomers	291206	
Acrylate oligomers	220402	
Acrylic fibre	220405	
Acrylic polymer - resins	220402	
Acrylic polymers	220402	
Acrylonitrile copolymer	220402	
Actinolite asbestos	260104	
Activated alumina	280900	
Activated carbon	290100	**
Activated carbon - contaminated	240203	
Activated sludge		**
Activator (photographic) - water-based		*
Additive tank cleaning residues		**
Additives to concrete		*
Adhesive tape		*
Adhesives - halogenated	290300	
Adhesives - hardened	290300	
Adhesives - hot melt	290300	

Remember to also classify the detailed composition of the waste

Adhesives - non-halogenated	290300	
Adhesives - rubber	290300	
Adhesives - solvent based	290300	
Adhesives - synthetic	290300	
Adhesives - water-based	290300	
Administration waste (general)	220902	
Aerosol (air fresheners) - full	290000	
Aerosol (air fresheners) -empty	230213	
Aerosol (polishes)	230213 or 290000	
Aerosol (starches)	220606	
Aerosol car care products		**
Aerosol containers		**
Aerosol containers - empty	230213	
Aerosol containers - full		**
Aerosol DIY products		**
Aerosol industrial products		**
Aerosol insecticides	291501	
Aerosol oven cleaners - empty	230213	
Aerosol shoe care products	290900	
Aerosol veterinary products		**
Agents - cytotoxic	291400	
Agents - oxidising		**
Aggregates - coarse	210101	
Aggregates - fine	210101	
Agricultural (intact) tyres	220404	
Agricultural machinery	230403	
Agricultural vehicles	230403	
Agrochemical container washings	241003	
Agrochemical containers		**
Agrochemical containers (non-pesticide)		**
Agrochemicals (mixed)		**
Ahrysolite	260104	
Air bags - undischarged	320500	
Air bags - discharged	220410	
Air conditioning equipment		**
Air fresheners (aerosol) - empty	230213	
Air fresheners (aerosol) - full	290000	
Aircraft	230404	
Alcoholic drinks	221101	
Alcohols n/o/s	290714	
Aldehydes n/o/s	290714	
Aliphatic acids	291701	
Aliphatic hydrocarbons	291702	
Alkali cellulose crumb		see individual entries
Alkali earth metal salts		**
Alkali metal hydroxides		**
Alkali metal oxides		**
Alkali metal phosphates		**
Alkali metal salts		**
Alkali metals - elemental		**
Alkaline batteries	230607	
Alkaline cleaners - proprietary		**
Alkaline developers (lithographic)		*

Remember to also classify the detailed composition of the waste

Alkaline earth metals - elemental		**
Alkalis		**
Alkalis (mixed)		**
Alkalis n/o/s		**
Alkyd resins	220402	
Alkylation catalysts		**
Alloy steel (other than iron and steel) waste and scrap	230103	
Alloys of gold	230211	
Alloys of platinum	230211	
Alloys of precious metals		**
Allyl chloride residues	291702 or 291801	
Alumina - activated	280900	
Alumina - contaminated	280900	
Alumina bricks	210202	
Aluminium - elemental	230205	
Aluminium - hydrates of	230205	
Aluminium - scrap	230205	
Aluminium ashes and residues		**
Aluminium cans	230205	
Aluminium cladding	230205	
Aluminium compounds		**
Aluminium dross (thermal metallurgy)	270202	
Aluminium foil	230205	
Aluminium lithoplates	230205	
Aluminium oxide	280900	
Aluminium paper laminate	220409	
Aluminium powder	230205	
Aluminium salt slags		*
Aluminium skimmings	230205	
Aluminium skimmings (thermal metallurgy)	230205	
Aluminium slags	270104	
Aluminium sludge	230205	
Aluminium sulphide powder	280819	
Aluminium waste and scrap	230205	
Amalgam - dental	230210	
Amalgam - other		**
Amides	291711 or 291712	
Amine filters		**
Amines	291711 or 291712	
Amino acids	291701	
Amino resins	291302 or 220402	
Aminophenol	291706	
Ammonia	280508	
Ammonia waste	280508	
Ammoniacal copper etchant		**
Ammonium	280900	
Ammonium salts	280900	
Ammunition		**
Amosite	260102	
Amyl acetate	291714	
Analogues (chlorinated)	291715	
Analogues (non-chlorinated)	291715	
Animal based glue waste	220804	

Remember to also classify the detailed composition of the waste

Animal bedding - soiled	250203	
Animal blood	220704	
Animal body organs	220704	
Animal bones	220704	
Animal carcasses	220704	
Animal carcasses suspected of BSE	250102	
Animal effluent	220705	
Animal excrement	220705	
Animal faeces	220705	
Animal fat	220802	
Animal flesh	220704	
Animal grease	220802	
Animal hair	220702	
Animal hair - coarse	220702	
Animal hair - fine	220702	
Animal hides	220704	
Animal manure	220705	
Animal parts - infected	250102	
Animal parts - uninfected	220704	
Animal processing waste n/o/s		**
Animal skins	220704	
Animal slurries	220705	
Animal stomach contents	220705	
Animal tissue	220704	
Animal urine	220705	
Animal waste suspected of BSE	250102	
Anode butts of petroleum coke and/or bitumen		**
Anode scraps		**
Anthophyllite asbestos	260104	
Anthracite filters	290100	
Anthrax contaminated soil		**
Antifreeze		**
Antifreeze fluids		**
Antimony - elemental		**
Antimony compounds	280813	
Antimony waste and scrap		**
APC residues - MSW combustion	270503	
Appliances - domestic		**
Appliances - domestic (electrical)	230501	
Appliances - domestic (electronic)	230501	
Appliances - domestic (gas powered)	230401	
Appliances - domestic (mechanical)	230402	
Appliances - electrical	230402	
Appliances - electronic	230501	
Aqua fortis	280103	
Aqua regia	280112	
Aromatic acids	291701	
Aromatic hydrocarbons	291703	
Arsenates	280900	
Arsenic - elemental	230207	
Arsenic compounds	280808	
Arsenic waste and residues		**
Arsenides		**

Remember to also classify the detailed composition of the waste

Arsenites	280900	
Articles - cadmium plated	230207	
Articles - loose		**
Artificial fibre waste	220405	
Asbestos - actinolite	260104	
Asbestos - anthophyllite	260104	
Asbestos - blue lagging	260101	
Asbestos - bonded		**
Asbestos - broken pieces		**
Asbestos - brown	260102	
Asbestos - chrysotile	260103	
Asbestos - composite materials		**
Asbestos - corrugated sheets	260201	
Asbestos - crocidolite	260101	
Asbestos - dust and free fibres	260105	
Asbestos - fine dust	260105	
Asbestos - insulation products		**
Asbestos - offcuts		**
Asbestos - sacks		**
Asbestos - sheet		**
Asbestos - sweepings		**
Asbestos - tremolite	260104	
Asbestos - white fibrous	260103	
Asbestos bonded products		**
Asbestos cement	260201	
Asbestos cement - fragmented	260201	
Asbestos cement - offcuts	260201	
Asbestos cement pipes	260201	
Asbestos cement roof tiles	260201	
Asbestos fibres		**
Asbestos lined brake shoes	230403	
Asbestos n/o/s	260105	
Asbestos sheets - corrugated	260201	
Asbestos tiles		**
Asbestos vehicle brake shoes	230403	
Ash - bottom		**
Ash - coal fly		**
Ash - contaminated		**
Ash - crematorium (pets)		**
Ash - furnace (foundries)		*
Ash - furnace bottom		*
Ash - incineration (tyre)		**
Ash - incinerator		**
Ash - oil fly	270502	
Ash - peat fly	270502	
Ash - pulverised fuel (PFA)	270501	
Ash - vitrified		**
Ash from incineration of printed circuit boards		**
Ash n/o/s		**
Asphalt (containing tar)	220202	
Asphalt (not containing tar)	220202	
Asphalt cement wastes	220201	
Assembly starter switches		**

Remember to also classify the detailed composition of the waste

Autoclaved clinical waste	250301	
Autoclaved microbiological waste	251301	
Axle assemblies	230403	
Azides	280827	
Azides - organic	291718	
B		
Baby wipes	220706	
Badger bristles and hair	220702	
Bag filter residues		**
Baggage - travel		**
Baghouse fume		**
Bags - blood	250201	
Bags - carrier	220402	
Bags - contaminated	240502	
Bags - plastic	220402	
Bags - polythene	220402	
Bags - refuse		**
Bags - stoma (used)	250203	
Bait		**
Bait stations		**
Baled household waste	220901	
Baled plastic waste	220402 or 240502	
Ballast - railway	240106	
Ballast (railway) - contaminated	240106	
Ballast waste tank cleaning residues		**
Banding		**
Barium carbonate	280815	
Barium chloride	280815	
Barium compounds	280815	
Barium compounds n/o/s (water insoluble)	280815	
Barium compounds n/o/s (water soluble)	280815	
Barium sulphate sludge	280604	
Bark	220604	
Barrelling residues		**
Barriers (metal) - safety	230406	
Batch waste - glass	210201	
Batteries - alkaline	230607	
Batteries - button cell	230609	
Batteries - car	230601 or 230602	
Batteries - dry cell	230605	
Batteries - lead acid (drained)	230602	
Batteries - lead acid (undrained)	230601	
Batteries - lithium	230609	
Batteries - mercury	230604	
Batteries - metal hydrides	230612	
Batteries - nickel cadmium	230603	
Batteries - nickel hydrides	230611	
Batteries - nickel iron	230612	
Batteries - silver oxide	230608	
Batteries - wet cell (drained)	230601	
Batteries - wet cell (undrained)	230602	
Batteries - zinc carbon	230605	
Batteries - zinc chloride	230606	

Remember to also classify the detailed composition of the waste

Battery stripping residue		**
Beach debris	220905	
Bearings - bridge		**
Bed-pan liners (used)	250203	
Beds		**
Beer	221101	
Bentonite sludge	240202	
Bentonite slurry	240202	
Benzene	291703	
Benzoic acid	291701	
Benzo-triazole	291718	
Benzyl acid chloride	291701	
Benzyl chlorides	291701	
Beryllium - elemental	230207	
Beryllium compounds	280801	
Beryllium hydroxide	280801	
Beryllium oxide	280801	
Beryllium waste and scrap	230207	
Beverage containers		**
Beverages in containers	221101	
Bicycles	230406	
Bilge oil	291007	
Bin - litter waste	220905	
Bins - waste		**
Biocides	291500	
Biocides n/o/s	291500	
Bio-filters		**
Biological dewatered effluent treatment sludge	221102	
Biological samples		**
Bioplant sludge	221102	**
Biscuits	220703	
Bismuth	230209	
Bismuth compounds	280900	
Bismuth waste and scrap	230209	
Bitumen	220202	
Bitumen emulsion	291301	
Black dross		*
Blaes		*
Blanket wash (used in print process)		**
Blankets		**
Blast furnace slag	270101	
Blasting grit	240302	
Bleach		**
Blocks - breeze	210203	
Blocks - concrete	210203	
Blocks - graphite	290100	
Blocks - thermalite	210203	
Blood - animal	220704	
Blood (human) containers	250201	
Blood bags	250201	
Blowdown - boiler		**
Boar bristles and hair	220702	
Bobbins - paper	220401	

Remember to also classify the detailed composition of the waste

Bobbins - plastic	220402	
Bodies - lorry	230403	
Body fluid containers	250201	
Body organs - animal	220704	
Boiler and flue cleanings		**
Boiler ash (incinerator)		**
Boiler blowdown		**
Boiler residues		**
Boiler scale		**
Bonded asbestos		**
Bones - animal	220704	
Borates	280900	
Boric acid	280111	
Borofluorides	280820	
Boron	280401	
Boron compounds	280900	
Botanical waste	220605	
Bottle washings - paper pulp	220602	
Bottles - gas		**
Bottles - glass	240501	
Bottles - plastic	220402	
Bottles n/o/s		**
Bottom ash		**
Bottom ash - MSW combustion residue	270403	
Bottom dross - galvanizing slab zinc	270203	
Bottoms of stills	221100	**
BOV		*
Bovine offal - specified	220704	
Brake fluid	291004	
Brake fluids	291004	
Brake linings (containing asbestos)	230403	
Brake linings (not containing asbestos)		*
Brakes - car	230403	
Brass - scrap	230211	
Breeze blocks	210203	
Brewing waste	221101	
Bricks	210202	
Bricks - alumina	210202	
Brickwork	220201	
Brickwork and mortar (mixed)	220201	
Bridge bearings		**
Brine	241002	
Brine - tank cleaning residues	241002	
Brine mud	240202 or 280704	
Brine reconditioning sludge	280704	
Brines	241002	
Bristles and hair - badger	220702	
Bristles and hair - boar	220702	
Bristles and hair - hog	220702	
Bristles and hair - pig	220702	
Broken pieces - asbestos		**
Bromates	280900	
Bromine	280509	

Remember to also classify the detailed composition of the waste

Bromoxynil		*
Bromoxynil octanoate	280900	
Bronze - scrap	230211	
Brown asbestos	260102	
BSE-suspected animal carcasses	250102	
BSE-suspected animal waste	250102	
Buckets		**
Buds - cotton	220402 or 220601	
Buffing dust - leather	220701	
Building rubble	220201	
Building rubble - contaminated	240400	
Building rubble n/o/s		**
Building waste	220201	
Bulbs (light)	230502	
Bulk containers - intermediate		**
Bulky household waste	220904	
Bullets/shotgun cartridges	320000	**
Bumpers - car		**
Bunker fuels oil tank cleaning residues	291007	
Burnt foundry sands	240201	
Bushes	220603	
Butadiene copolymer	220402 or 220403	
Button cell batteries	230609	
Butts - plastic	220402	
Butts - rifle		**
Butts - water		**
Butyl acetate	291714	
C		
CA waste n/o/s		*
Cable - electrical	230405	
Cable stripping waste	230405	
Cadmium - elemental	230207	
Cadmium compounds	280811	
Cadmium hydroxide	280811	
Cadmium nitrate	280811	
Cadmium oxide	280811	
Cadmium plated articles	230207	
Cadmium waste and scrap	230207	
Cake - filter (dewatered)		**
Cake - filter (halogenated)		**
Cake - filter (non-halogenated)		**
Cake - filter (titanium)	280900	
Cake - filter n/o/s		**
Cake - waste water plant filter		**
Calcium	280304	
Calcium carbonate	280602	
Calcium chloride	280702	
Calcium compounds		**
Calcium fluoride sludge	280820	
Calcium hydroxide (slaked lime)	280208	
Calcium mineral slur		*
Calcium oxide	280207	
Calcium silicate sludge	280900	

Remember to also classify the detailed composition of the waste

Calcium sulphate	280603	
Calcium sulphate from FGD	280603	
Calcium sulphate moulds	280603	
Cameras - single use (with batteries)	220410	
Cameras - single use (without batteries)	220410	
Candles - oxygen generating		*
Cans		**
Cans - aerosol		**
Cans - aluminium	230205	
Cans - metal		**
Cans - steel	230103	
Canteen waste	220703	
Canteen waste - food	220703	
Canteen waste - non-food	220902	
Capacitors (with PCBs or PCTs)	291715	
Capacitors (without PCBs or PCTs)	230503	
Car batteries		**
Car bodies	230403	
Car brakes		**
Car bumpers		**
Car care products		**
Car care products (aerosol)		**
Car exhausts	230403	
Car tyres (intact)	220404	
Car tyres (shredded)	220404	
Carbide silicon - unused	210307	
Carbide silicon - used		**
Carbides		**
Carbon	290100	
Carbon - activated	290100	
Carbon - contaminated	290100	
Carbon (activated) - contaminated	240203	
Carbon black	290100	
Carbon dust	290100	
Carbon fibre	290100	
Carbon filters		**
Carbon granules	290100	
Carbon strips	290100	
Carbon tetrachloride	291702 or 291801	
Carbonaceous material - acidic	280111	
Carbonates n/o/s		**
Carbonates of potassium	280206	
Carbonates of sodium	280203	
Carbonundrum (silicon carbide)	210307	
Carcasses	250201	
Carcasses - fish	220704	
Carcasses - infected	250102	
Carcasses (animal) suspected of BSE	250102	
Carcinogens		**
Cardboard	220401	
Cardboard and paper (mixed)	220401	
Cardboard containers	220401	
Cardboard containers - contaminated	240502	

Remember to also classify the detailed composition of the waste

Cardboard cores	220401	
Cardboard packaging	220401	
Cardboard packaging - used	240502	
Carpet - underlay		**
Carpet laying waste		**
Carpeting - stripped		**
Carpets		**
Carriages - horse drawn	230403	
Carriages - railway	230404	
Carrier bags	220402	
Cars	230403	
Cartons - drink		**
Cartridges - gas		**
Cartridges - shotgun/bullets	320000	**
Cartridges - toner	240502	
Cartridges (filter) - contaminated		**
Cartridges (ink jet printer) remanufacturing residues	240501	
Cartridges (laser printer) remanufacturing residues	240501	
Casein based glue waste	220804	
Casings - cellulose (synthetic)		**
Cassettes		**
Cast iron pipes	230102	
Cast iron waste and scrap	230102	
Casting moulds (ferrous)		**
Casting moulds (non-ferrous)		**
Catalysts - alkylation		**
Catalysts - catalytic cracking		**
Catalysts - cobalt (hydrodesulphurisation)		**
Catalysts - fluid catalytic cracking		**
Catalysts - molybdenum (hydrodesulphurisation)	230300	
Catalysts - nickel (hydrodesulphurisation)	230300	
Catalysts - not spent		**
Catalysts - precious metal bearing	230300	
Catalysts - spent		**
Catalysts - transition metal	230300	
Catalysts - vanadium pentoxide	230300 or 280802	
Catalytic converters		**
Catalytic cracking catalysts		**
Cathode ray tubes	230502	
Caustic - fluoride	280820	
Caustic - phenolic	291706	
Caustic - sulphide	280819	
Caustic antimonial dross		**
Caustic paint sludge		**
Caustic sludge		**
Caustic solutions		**
Ceiling tiles		**
Cellophane - dry	220402	
Cellophane - wet	220402	
Cellulose - xanthate	291206	
Cellulose acetate	291714	
Cellulose based chemicals		**
Cellulose casings (synthetic)		**

Remember to also classify the detailed composition of the waste

Cellulose ethers	291713	
Cellulose paint thinner		*
Cellulosic acidic film	291206	
Cellulosic fibre - acidic	291206	
Cellulosic fibre - dry	220601	
Cellulosic fibre - wet	220601	
Cellulosic film - dry	220402	
Cement	270700	
Cement - asbestos	260201	
Cement (asbestos) - fragmented	260201	
Cement (asbestos) - offcuts	260201	
Cement (asbestos) - roof tiles	260201	
Cement clinker	270700	
Cement kiln dust	270700	
Cement pipes (asbestos)	260201	
Cement products	210203	
Cement products - fibre	210203	
Cement slurry	270700	
Cement/concrete sludge	270700	
Ceramic colour		**
Ceramic dust	210202	
Ceramic fibre offcuts	210202	
Ceramic fibres	210202	
Ceramic floor tiles	210202	
Ceramic slurry	210202	
Ceramic wastes - fired	210202	
Ceramics	210202	
Cermet waste and scrap		**
Cesspit contents	221001	
Cesspit sludge	221002	
Cesspool waste	221001	
CFC	291100	
CFC refrigerants	291100	
CFCs	291100	
Chairs - metal	230406	
Chairs - plastic	220402	
Chairs - wooden	220408 or 220409	**
Chalk	210102	
Chalk slurry	210102	
Chelating compounds n/o/s	290802	
Chemical fume		**
Chemical toilet waste	221001	
Chemical waste - general factory		**
Chemicals - cellulose based		**
Chemicals - fine		**
Chemicals - laboratory		**
Chemicals - photographic		*
Chemicals - swimming pool		**
Chemicals - water treatment		**
Chemicals - water treatment n/o/s		**
Chemicals (household) - redundant		**
Chests - tea		**
Chewing gum	220606	

Remember to also classify the detailed composition of the waste

China	210202	
Chipboard	220410	
Chips - ferrous metal	230102	
Chlorates	280825	
Chlorides		**
Chlorinated dioxins	291717	
Chlorinated engine oil	291001	
Chlorinated gear oil	291001	
Chlorinated hydraulic oil	291004	
Chlorinated lubricating oil	291001	
Chlorinated oil emulsions	291007	
Chlorinated phenols	291706	
Chlorinated solvents (mixed)		**
Chlorine	280501	
Chlorites	280900	
Chlorofluorocarbons	291100	
Chloroform	291702	
Chloromethanes	291801	
Chlorpyrifos		*
Chocolate	220703	
Chocolate waste	220703	
Chromates	280803	
Chrome	230207	
Chrome compounds (hexavalent)	280803	
Chrome hydroxide	280803	
Chromic acid	280105	
Chromic and hydrochloric acid (mixed)	280112	
Chromic and nitric acid (mixed)	280112	
Chromic and phosphoric acid (mixed)	280112	
Chromic and sulphuric acid (mixed)	280112	
Chromites	280900	
Chromium	230207	
Chromium compounds		**
Chromium compounds - hexavalent	280803	
Chromium compounds (trivalent)	280900	
Chromium hydroxide	280900	
Chromium oxide		**
Chromium waste and scrap	230207	
Chrysotile asbestos	260103	
Cigarette ends	220601	
Cigarettes	220601	
Civic amenity household waste	220904	
Civic amenity waste n/o/s	220904	
Cladding - aluminum	230205	
Cladding - steel	230103	
Cladding - stone	210101	
Clay	210102	
Clay - contaminated	240102	
Clay - filter		**
Clay and terracotta land drain pipes	210202	
Clay floor tiles	210202	
Clay pots	210202	
Clay roof tiles	210202	

Remember to also classify the detailed composition of the waste

Clay scrap		**
Clay sludge	240202 or 240103	
Clay slurry	240202 or 240103	
Cleaners - oven (aerosol) - empty	230213	
Cleaners - vacuum	230402	
Cleaning compounds - halogenated		**
Cleaning compounds - proprietary alkaline		**
Cleaning residues (pitch tank)		**
Cleaning sludge - tank		**
Cleaning waste - food		**
Cleanings - boiler flue	270506	
Cling film	220402	
Clinical hospital waste		**
Clinical veterinary wastes		**
Clinical waste		**
Clinical waste - autoclaved	250301	
Clinical waste n/o/s		**
Clinker		**
Clinker - cement	270700	
Clothing		**
Clothing - contaminated		**
Clothing - protective		**
Clothing (used)		**
Cloths - filter		**
Cloths - polishing		**
Cloths - wiping		**
Clutch linings		**
Coal	220104	
Coal - contaminated	290100	
Coal fly ash	270501	
Coal tars	291503	
Coarse - rejects from waste derived fuel manufacture		**
Coarse aggregates	210101	
Coating powders		**
Coatings - paint (PVC)	220402	
Coatings of timber treatment		**
Cobalt		**
Cobalt catalyst (hydrodesulphurisation)		**
Cobalt compounds	280804	
Cobalt hydroxide	280804	
Cobalt molybdate	280804	
Cobalt oxide	280804	
Cobalt waste and scrap		**
Cocoa husks	220606	
Cocoa shells	220606	
Cocoa skins	220601	
Coconut tow, noils and yarn waste		*
Coffee	220606	
Coke	220104	
Coke - contaminated	290100	
Colliery spoil	270600	
Colliery tailings	270600	
Colloids		**

Remember to also classify the detailed composition of the waste

Colour - ceramic		**
Colour - raw		**
Colours - food (synthetic)		**
Combined materials		**
Combustible waste - miscellaneous		**
Combustion ash - paper piles	270402	
Combustion linings	240206	
Combustion refractories	240206	
Combustion residue (MSW) - APC residues	270503	
Combustion residue (MSW) - bottom ash	270403	
Combustion residue (MSW) - grate ash	270403	
Commercial vehicles	230403	
Commercial waste	220902	
Commercial waste - general	220902	
Compact discs	220402	
Compacted household waste	220901	
Complex cyanides (soluble)	280821	
Complex fluorides	280820	
Components - electrical	230503	
Components - electronic	230503	
Components - vehicle	230403	
Composite (doors)	220410	
Composites		**
Compost - mushroom	220607	
Compost - spent	220607	
Compost off-specification	220607	
Composted household waste	220901	
Compounds - aluminium		**
Compounds - antimony	280813	
Compounds - arsenic	280808	
Compounds - barium	280815	
Compounds - beryllium	280801	
Compounds - bismuth	280900	
Compounds - boron	280900	
Compounds - cadmium	280811	
Compounds - calcium		**
Compounds - chelating n/o/s	290802	
Compounds - chromium		**
Compounds - chromium (hexavalent)	280803	
Compounds - chromium (trivalent)	280900	
Compounds - cobalt	280804	
Compounds - copper	280806	
Compounds - degreaser		**
Compounds - diazo		**
Compounds - ferric		**
Compounds - heterocyclic (nitrogen)	291705	
Compounds - heterocyclic (sulphur)	291705	
Compounds - iron		**
Compounds - lead	280818	
Compounds - magnesium		**
Compounds - manganese	280900	
Compounds - mercury	280816	
Compounds - mixed laboratory		**

Remember to also classify the detailed composition of the waste

Compounds - molybdenum	280900	
Compounds - nickel	280805	
Compounds - nitro (inorganic)	280900	
Compounds - nitro (organic)	291708	
Compounds - organophosphorous	291802	
Compounds - organosulphur	291803	
Compounds - organotin	291603	
Compounds - osmium	280900	
Compounds - oxygen (heterocyclic)	291705	
Compounds - potassium		**
Compounds - selenium	280809	
Compounds - silicon		**
Compounds - silver	280810	
Compounds - sodium		**
Compounds - sulphur		**
Compounds - tellurium	280814	
Compounds - thallium	280900	
Compounds - tin	280812	
Compounds - titanium		**
Compounds - tungsten	280900	
Compounds - uranium	280900	
Compounds - vanadium	280802	
Compounds - yttrium	280900	
Compounds - zinc	280807	
Compounds - zirconium	280900	
Compression fridges	230401	
Computer disks	220402	
Computer keyboards	230501	
Computer paper	220401	
Computer screens	230501	
Computers	230501	
Concrete	210203	
Concrete - additives		*
Concrete - contaminated	240400	
Concrete - dry	210203	
Concrete - fibre reinforced	210203	
Concrete - precast products	210203	
Concrete - steel-reinforced	210203	
Concrete - unreinforced	210203	
Concrete - wet	270700	
Concrete blocks	210203	
Concrete floor tiles	210203	
Concrete kerbs	210203	
Concrete lighting columns	210203	
Concrete pipes	210203	
Concrete railway sleepers	210203	
Concrete roof tiles	210203	
Concrete slurry	270700	
Concrete/cement sludge	270700	
Condemned food		**
Condensate from landfill gas	221103	
Conditioned fly ash		**
Condoms	220403	

Remember to also classify the detailed composition of the waste

Cones (roadworks)	220403	
Construction waste (contaminated) n/o/s	240400	
Construction waste containg chemicals	240400	
Container washings - agrochemical	241003	
Containers - aerosol		**
Containers - aerosol - empty	230213	
Containers - aerosol - full		**
Containers - agrochemical		**
Containers - agrochemical (non-pesticide)		**
Containers - beverage		**
Containers - body fluid	250201	
Containers - bulk (intermediate)		**
Containers - cardboard	220401	
Containers - cardboard (contaminated)	240502	
Containers - empty		**
Containers - empty used		**
Containers - glass	240501	
Containers - glass (contaminated)	240501	
Containers - human blood		**
Containers - human excretions		**
Containers - metal		**
Containers - metal (contaminated)	240501	
Containers - paper	220401	
Containers - paper (contaminated)	240502	
Containers - pesticide		**
Containers - pesticide (metal)	240501	
Containers - pesticide (plastic)	240502	
Containers - plastic	220402	
Containers - plastic (contaminated)	240502	
Containers - pressurised		**
Containers - urine	250203	
Containers - veterinary medicines		**
Containers - wooden	220408	
Containers - wooden (contaminated)	240502	
Containers (metal) - used	240502	
Contaminated absorbents (oil/fuel)	240203	
Contaminated activated carbon	240203	
Contaminated alumina	280900	
Contaminated ash		**
Contaminated bags	240502	
Contaminated building rubble	240400	
Contaminated carbon	290100	
Contaminated cardboard containers	240502	
Contaminated clay	240102	
Contaminated clothing		**
Contaminated coal	290100	
Contaminated coke	290100	
Contaminated concrete	240400	
Contaminated construction waste containing chemicals	240400	
Contaminated construction waste n/o/s	240400	
Contaminated containers - cardboard	240502	
Contaminated containers - glass	240501	
Contaminated containers - metal	240501	

Remember to also classify the detailed composition of the waste

Contaminated containers - plastic	240502	
Contaminated containers - wood	240502	
Contaminated demolition waste	240400	
Contaminated demolition waste	240400	
Contaminated drilling muds (oil)	240202	
Contaminated electrolyte		**
Contaminated feedstuffs		**
Contaminated filter cartridges		**
Contaminated filter elements		**
Contaminated filter paper	220401	
Contaminated filters		**
Contaminated glass containers	240501	
Contaminated glassware	240501	
Contaminated grinding wheels		**
Contaminated grit	240105	
Contaminated material (explosive)		**
Contaminated medical equipment		**
Contaminated metal containers	240105	
Contaminated metal turnings		**
Contaminated oil		**
Contaminated packaging (cleanable)	240501	
Contaminated packaging (uncleanable)	240502	
Contaminated paper containers	240502	
Contaminated paper wipes	220401	
Contaminated piping and ducting		**
Contaminated plastic container linings	240502	
Contaminated plastic containers	240502	
Contaminated rags (solvent)	240800	
Contaminated rags and tissues	240800	
Contaminated railway ballast	240106	
Contaminated rubbish		**
Contaminated rubble	240400	
Contaminated sacks	240502	
Contaminated sand	240103	
Contaminated sand stone from marine oil spills	240103	
Contaminated sawdust	240600	
Contaminated scale	240403	
Contaminated shredded plastic carboys	240502	
Contaminated silt	240103 or 240105	
Contaminated silt and dredgings	240105 or 240104 or 240103	
Contaminated sludge	240900	
Contaminated soil (all types of soil)	240100	
Contaminated soil (anthrax)	240100	
Contaminated soil (sub soil)	240102 or 240103	
Contaminated soil (top soil)	240101	
Contaminated spoil	240100 or 270600	
Contaminated water		**
Contaminated wooden containers	240502	
Contents - gut	220705	
Contents of animal stomachs	220705	
Contraband drinks	221101	
Contraries - glass cullet		**
Controlled drugs	291400	

Remember to also classify the detailed composition of the waste

Controlled substances		**
Convection cookers	230401	
Converters - catalytic		**
Cooked meal	220703	
Cookers	230401	
Cookers - convection	230401	
Cookers - gas	230401	
Cookers - microwave	230501	
Cooking fats		**
Cooking oil		**
Coolant - engine		**
Cooling towers - timber	220408	
Copolymers - acrylate	220402	
Copper - elemental	230202	
Copper - scrap	230202	
Copper and precious metal processing slags		**
Copper ashes and residues	230202	
Copper chloride	280806	
Copper compounds	280806	
Copper dross (thermal metallurgy)	270205	
Copper oxide	280806	
Copper production slag	270106	
Copper skimmings (thermal metallurgy)	270205	
Copper slags	270106	
Copper waste and scrap	230202	
Cordage (used)	220601	
Cores - cardboard	220401	
Cork	220410	
Cork waste	220410	
Corrugated plastic sheets	220402	
Corrugated sheets		**
Corrugated sheets - asbestos	260201	
Corrugated sheets - iron	230102	
Cosmetic products - liquid	290700	
Cosmetic products (bulk)	290700	
Cosmetic products (retail containers)	290700	
Cotton	220601	
Cotton buds	220402 & 220601	
Cotton textiles	220601	
Cotton waste	220601	
Cotton wool	220601	
Covers - manhole		**
Crates - plastic	220402	
Crates - wooden	220408	
Crematorium ash (pets)		**
Creosote	291303	
Crocidolite asbestos	260101	
Crop residues	220603	
Crude oil desalter sludge	291007	
Crude oil tank cleaning residues	291007	
Crumb - alkali cellulose		see individual entries
Crushed fibre kegs		**
Crushed fluorescent tubes	230502	

Remember to also classify the detailed composition of the waste

Crushed oil filters		**
Crushed rock	210101	
Crystals - silica	210305	
Cullet	210201	
Cured foundry sands	240201	
Cushions	220406	
Customer waste		**
Cutting oil	291006	
Cutting oils and water (miscible)	291007	
Cuttings - leather	220701	
Cuttings - wood	220407	
Cyanates - iso	291201	
Cyanides - complex (soluble)	280821	
Cyanides - ferri	280821	
Cyanides - ferro	280821	
Cyanides - inorganic	280821	
Cyanides - thio	290710	
Cyanides n/o/s	280821	
Cyclone deposits		**
Cylinders - gas		**
Cylinders - gas, flammable contents		**
Cylinders - gas, non-flammable contents		**
Cytotoxic agents	291400	
Cytotoxic drugs	291400	
D		
Dairy products	220703	
Dairy products (solids)	220703	
Dairy products (liquids)	220703	
Damaged materials - fire		**
DDT	291502	
Deactivated fungus mycelium from penecillin production	221101	
Debris		**
Debris - beach	220905	
Debris - general		**
Decant oil tank cleaning residues	291007	
Degras	220801	
Degreaser compounds		**
De-inked paper pulp	220602	
De-inking sludge		**
De-inking trash		**
Deletion products (lithographic)		**
Demolition waste - contaminated	240400	
Demolition waste - general	220202	
Demolition waste containing chemicals	240400	
Denatured paint waste		**
Dental floss	220405	
Deodorants		**
Deposits - cyclone		**
Derv	291702	
Detectors - smoke		**
Detergents	290801	
Developer (photographic) - solvent-based		*
Developer (photographic) - water-based		*

Remember to also classify the detailed composition of the waste

Developers - alkaline (lithographic)		*
Developers (lithographic)		**
Dewatered effluent treatment sludge		**
Dewatered filter cake		**
Dewatered sewage sludge	221002 or 221003	
Dextrin starch	220606	
Diamond saw cutting slurry		**
Diatomaceous earth	210100 or 220100	
Diazo compounds		**
Dicalcium phosphate dihydrate	280900	
Dichloroethane	291801	
Dichloromethane	291801	
Dichlorophen	291801	
Die cast dross - zinc	270203	
Diesel	291702	
Diesel and petrol (mixed)	291702	
Diethylene glycol	291713	
Digested sewage sludge	221003	
Di-isocyanate - washing waste		**
Dioxins	291717	
Diphenyl methane diisocyanate (MDI) - liquid	291201	
Diphenyl methane diisocyanate (MDI) - solid	291703	
Dirt		**
Discharged air bags	220410	
Discharged fire extinguishers		**
Diseased fish	220704	
Diseased fish carcasses	220704	
Disinfectants		**
Disks - computer	220402	
Display units - visual	230501	
Disposable pants		**
Disposable razors	220410	
Disposable toothbrushes	220402	
Distillate tank cleaning residues	291007	
Distillation residues	291301	
DIY products		**
DIY products (aerosol)		**
Dog faeces	220705	
Domestic appliances		**
Domestic appliances (electrical)	230501	
Domestic appliances (electronic)	230501	
Domestic appliances (gas powered)	230401	
Domestic appliances (mechanical)	230402	
Domestic appliances CFCs extracted	230401	
Domestic appliances CFCs not extracted	230401	
Domestic food	220703	
Domestic hospital waste		**
Domestic pets	220704	
Domestic waste	220901	
Doors (composite)		**
Doors (metal)	230406	
Doors (timber)		**
Drained settling pond sludge		**

Remember to also classify the detailed composition of the waste

Dredgings	220103	
Dredgings and silt - contaminated	240104	
Dressed seed	240800	
Dressings - out of date	220405	
Dressings - soiled	250202	
Dried paint waste		**
Drilling mud	240202	
Drilling muds - water based	240202	
Drilling muds (contaminated with oil)	240202	
Drink cartons		**
Drinks - alcoholic	221101	
Drinks - contraband	221101	
Dross - aluminium (thermal metallurgy)	270202	
Dross - antimonial (caustic)		**
Dross - black		*
Dross - copper (thermal metallurgy)	270205	
Dross - gold (thermal metallurgy)	230208	
Dross - lead (thermal metallurgy)	270201	
Dross - magnesium	270206	
Dross - platinum (thermal metallurgy)	230208	
Dross - pumping		**
Dross - refining		**
Dross - silver (thermal metallurgy)	230208	
Dross - white		*
Dross - zinc (thermal metallurgy)	270203	
Dross from the manufacture of iron and steel		**
Drugs	291400	
Drugs - controlled	291400	
Drugs - cytotoxic	291400	
Drugs - illegal	291400	
Drugs - prescribed (bulk)	291400	
Drugs - prescribed (retail containers)	291400	
Drums - steel	230103	
Drums n/o/s		**
Dry cell batteries	230605	
Dry cellophane	220402	
Dry cellulosic fibre	220601	
Dry cellulosic film	220402	
Dry cleaning still residue		**
Dry concrete	210203	
Dry ink		**
Dry waste		**
Dryers - tumble	230401	
Ducting and piping - contaminated	240400	
Dust - (flue) electric arc welding	270506	
Dust - asbestos	260105	
Dust - carbon	290100	
Dust - ceramic	210202	
Dust - dyed leather	220701	
Dust - extractor		**
Dust - feather	220702	
Dust - fibre		**
Dust - flue gas	270506	

Remember to also classify the detailed composition of the waste

Dust - furnace (foundries)	270506	
Dust - grinding	240301	
Dust - leather buffing	220701	
Dust - refractory		**
Dust - sander	240301	
Dust - scrap metal		**
Dust - silica (powdered)	210305	
Dust - spelter		*
Dust (fine) - asbestos	260105	
Dust n/o/s		**
Dye penetrant waste	290600	
Dye pigments	290500	
Dyed leather dust	220701	
Dyestuffs	290600	
E		
Earth - diatomaceous	210100 or 220100	
Earth metal salts (alkali)		**
Earth metals (alkaline) - elemental		**
Earthmover (intact) tyres	220404	
Earthmover (shredded) tyres	220404	
Ebonite	220403	
Effluent - animal	220705	
Effluent - septic tank	221001	
Effluent sludge - liquid		**
Effluent treatment sludge		**
Effluent treatment sludge - biological (dewatered)	221102	
Effluent treatment sludge -dewatered		**
Egg waste	220703	
Elastomer textiles	220405	
Electric arc welding - flue dust	270506	
Electric motors (contaminated)	230406	
Electric motors (decontaminated)	230406	
Electrical absorption fridges	230401	
Electrical appliances	230402	
Electrical assemblies consisting only of metals or alloys		**
Electrical cable	230405	
Electrical components	230503	
Electrical domestic appliances	230501	
Electrical fittings		**
Electrical fixtures		**
Electrical wire	230405	
Electrolyte		**
Electrolyte - contaminated		**
Electrolyte sludge		**
Electronic appliances	230501	
Electronic components	230503	
Electronic domestic appliances	230501	
Electronic equipment	230501	
Electronic fittings	230503	
Electronic fixtures	230503	
Electronic scrap	230501	
Electrostatic precipitator sludge - wet		**
Elemental alkali metals		**

Remember to also classify the detailed composition of the waste

Elemental alkaline earth metals		**
Elemental aluminium	230205	
Elemental antimony		**
Elemental beryllium	230207	
Elemental cadmium	230207	
Elemental copper	230202	
Elemental iron	230102	
Elemental lead	230201	
Elemental magnesium	230209	
Elemental mercury	230206	
Elemental metals		see individual entries
Elemental metals n/o/s		**
Elemental nickel	230207	
Elemental phosphorous	230209	
Elemental potassium		**
Elemental selenium	230207	
Elemental sodium	230209	
Elemental tellurium	230209	
Elemental thallium	230209	
Elemental tin	230204	
Elemental uranium	230209	
Elemental vanadium		**
Elemental yttrium	230209	
Elemental zinc	230203	
Elements - filter		**
Elements - kettle		**
Elements - water heater	230212	
Elements (filter) - contaminated		**
Emergency flares	320300 or 320600	**
Empty aerosol containers	230213	
Empty containers		**
Empty used containers		**
Emulsion - bitumen	291301	
Emulsion - rolling mill		**
Emulsions (oil) - chlorinated	291007	
Emulsions (oil) - non-chlorinated	291007	
Enamel sludge		**
Enamels	290202	
Enamels - vitreous	210201	
Engine coolant		**
Engine oil	291001	
Engine oil - chlorinated	291001	
Engine oil - non-chlorinated	291001	
Engines	230403	
Engines - railway	230403	
Enzymes		**
Epichlohydrin	291206	
Epoxy polyester	290300	
Epoxy resin	290300	
Epoxy resins	290300	
Epoxy/polyester powder paint	290202	
Epoxy-based glue	290300	
Equipment - air conditioning		**

Remember to also classify the detailed composition of the waste

Equipment - electronic	230501	
Equipment - medical (contaminated)		**
Equipment - metal		**
Equipment - military	230403	
Equipment - office		**
Equipment - process		**
Equipment - protective (personal)		**
Equipment - refrigeration	230401	
Equipment - X ray	230406	
Ester - phosphate		**
Esters n/o/s	291714	
Etchant - ammonical copper		**
Ethanol	291702	
Ethene resins	291206	
Ethers	291713	
Ethers - starch	291713	
Ethers cellulose	291713	
Ethers n/o/s	291713	
Ethoxylated alkyl (surfactant)	290801	
Ethoxylated alkyphenol (surfactant)	290801	
Ethyl benzene	291703	
Ethyl silicate	291714	
Ethylene glycol	291702	
Ethylene oxide	291704	
Ethylene polymers	220402	
Excavated road metal		**
Excavated rock	210101	
Excavation waste		**
Excrement - animal	220705	
Excretion (human) containers		**
Exhausts - cars	230403	
Explosive charges - used		**
Explosive material		**
Explosive material - contaminated		**
Explosive material (explosive properties)		**
Explosives		**
Explosives - inorganic		**
Explosives - organic		**
Extinguishers - fire		**
Extinguishers (fire) - discharged		**
Extraction - ilmenite residues	210102	
Extractor dust		**
F		
Factory waste (general chemical)		**
Faeces - animal	220705	
Faeces - dog	220705	
Fat - animal	220802	
Fats		**
Fats - cooking		**
Feather dust	220702	
Feathers	220702	
Feedstuffs - contaminated		**
Feldspar waste	210102	

Remember to also classify the detailed composition of the waste

Fellmongering waste		**
Felt - roofing	220201	
Fem-fresh wipes	220706	
Feminine hygiene waste	220706	
Fermentation waste	221101	
Ferric compounds		**
Ferric sludge		**
Ferricyanides	280821	
Ferrocyanides	280821	
Ferrous and non-ferrous (mixed) scrap	230213	
Ferrous casting moulds	230102	
Ferrous metal chips	230102	
Ferrous metal filings	230102	
Ferrous metal milling waste	230102	
Ferrous metal scrap	230102	
Ferrous metal shavings	230102	
Ferrous metal stampings	230102	
Ferrous metal trimmings	230102	
Ferrous metal turnings	230102	
Ferrous slags n/o/s		**
Ferrous swarf	230102	
Fertiliser		**
Fibre - acrylic	220405	
Fibre - carbon	290100	
Fibre - cellulosic - acidic	291206	
Fibre - cellulosic - dry	220601	
Fibre - cellulosic - wet	220601	
Fibre - glass	210304	
Fibre (of reinforced concrete)		**
Fibre cement products	270700	
Fibre dust		**
Fibre glass wastes	220402	
Fibre kegs - crushed		**
Fibre kegs - washed		**
Fibre products (resin reinforced) - other than glass		**
Fibreboard	220601	
Fibreglass	220402	
Fibres - asbestos		**
Fibres - ceramic	210202	
Fibres - ceramic offcuts	210202	
Fibres - mineral (man made)	210304	
Fibres - textile (processed) - animal	220702	
Fibres - textile (processed) - mixed	220900	
Fibres - textile (processed) - synthetic	220405	
Fibres - textile (processed) - vegetable	220601	
Fibres - textile (unprocessed) - animal	220702	
Fibres - textile (unprocessed) - mixed	220900	
Fibres - textile (unprocessed) - synthetic	220405	
Fibres - textile (unprocessed) - vegetable	220601	
Fibres (mineral) - man made	210304	
Fighting vehicles	230403	
Filings - ferrous metal	230102	
Filings - metal scrap		**

Remember to also classify the detailed composition of the waste

Film - cellulosic - acidic	291206	
Film - cellulosic - dry	220402	
Film - cellulosic - wet	220402	
Film - photographic		*
Film - plastic	220402	
Film - polypropylene	220402	
Film - X-ray		*
Filter - bag residues		**
Filter (media) - rolling lubricant, used		**
Filter bed sludge		**
Filter cake - dewatered		**
Filter cake - halogenated		**
Filter cake - incineration of chemical waste		**
Filter cake - non-halogenated		**
Filter cake - phenolic	291703	
Filter cake - titanium	280900	
Filter cake - waste water plant		**
Filter cake n/o/s		**
Filter cartridges - contaminated		**
Filter clay	240203	
Filter cloths		**
Filter elements		**
Filter elements - contaminated		**
Filter paper	220401	
Filter paper - contaminated	220401	
Filter sludge		**
Filters - amine		**
Filters - anthracite	290100	
Filters - carbon		**
Filters - contaminated		**
Filters - oil		**
Filters - oil (crushed)		**
Filters - spray booth		**
Filters (oil) - used		**
Filtrate		**
Filtration sludge		**
Fine aggregates	210101	
Fine chemicals		**
Fine dust - asbestos	260105	
Fine rejects from waste derived fuel manufacture	220906	
Finely powdered solids		**
Fines - discard from coal recovery	220104	
Fines - screening		**
Finished products - leather	220701	
Finished products - polymeric		**
Finished products - sheepskin	220701	
Finishers (lithographic)		**
Finishing waste		**
Finishing waste - metal surface		**
Fire damaged materials		**
Fire extinguishers		**
Fire extinguishers - discharged		**
Fire extinguishing powder		**

Remember to also classify the detailed composition of the waste

Fire lighters		*
Fired - pottery	210202	
Fired ceramic wastes	210202	
Fired product		**
Fireproof materials (electrolysis)		**
Fireworks	320600	
Fish - diseased	220704	
Fish - processing waste	220704	
Fish carcasses	220704	
Fish carcasses - diseased	220704	
Fish netting		**
Fish parts	220704	
Fish sievings	220704	
Fish waste	220704	
Fish waste (from processing)	220704	
Fittings - electrical		**
Fittings - electronic	230503	
Fixer - photographic		*
Fixtures - electrical		**
Fixtures - electronic	230503	
Flake - acetate		*
Flammable gas cylinder contents		**
Flammable solvents - mixed		**
Flares - emergency	230300 or 320600	**
Flares - smoke	320000	**
Flares and maroons (marine)	320300 or 320600	
Flavourings		**
Flax tow and waste	220601	
Flesh - animal	220704	
Flint	210101	
Flocculants		**
Flocculent sludges (water industry)		**
Floor sweepings	240600	
Floor tiles (ceramic)	210202	
Floor tiles (clay)	210202	
Floor tiles (concrete)	210203	
Floor tiles (slate)	210101	
Flooring (sheet)		**
Floss - dental	220405	
Flour improver		*
Flue cleanings - boiler	270506	
Flue dust - electric arc welding	270506	
Flue gas dust	270506	
Fluff		**
Fluid - brake	291004	
Fluid catalytic cracking (FCC) catalysts		**
Fluorescent tubes	230502	
Fluorescent tubes - crushed	230502	
Fluorescent tubes - high pressure (loose)	230502	
Fluorescent tubes - high pressure (packaged)	230502	
Fluorescent tubes - low pressure (loose)	230502	
Fluorescent tubes - low pressure (packaged)	230502	
Fluoride caustic	280820	

Remember to also classify the detailed composition of the waste

Fluorides	280820	
Fluorides - complex	280820	
Fluorinated ethylene polymers	220402	
Fluorine	280502	
Fluoroborate washings	280820	
Fluospar waste	210102	
Fly ash - coal	270501	
Fly ash - conditioned		**
Fly ash - oil	270502	
Fly ash - peat	270502	
Fly ash sludge - oil	270502	
Fly ash sludge - coal	270501	
Fly ash sludge - peat	270502	
Fly ash sludge - pulverised fuel (PFA)	270501	
Foam rubber	220403	
Foil - aluminium	230205	
Food		**
Food - canteen waste	220703	
Food - condemned		**
Food - domestic	220901	
Food - out of date		**
Food - synthetic	221101	
Food cleaning waste		**
Food colours (synthetic)		**
Food not suitable for consumption		**
Food processing waste		**
Food washing waste	221102	
Formaldehyde	291714	
Formalin	291714	
Formic acid	291701	
Foundry furnace ash	270401 or 270402	
Foundry furnace dust		**
Foundry sand - non-phenolic	240201	
Foundry sand - phenolic	240201	
Foundry sands - burnt	240201	
Foundry sands - cured	240201	
Foundry sands (resin coated)	240201	
Fragmented asbestos cement	260201	
Fragmentised metal		**
Fragmentiser residue (cabling)	240700	
Fragmentiser residue (circuit boards)	240700	
Fragmentiser residue (domestic appliances)	240700	
Fragmentiser residue (electrical/electronic goods)	240700	
Fragmentiser residue (electrical/electronic parts)	240700	
Fragmentiser residue (mixed scrap sources)	240700	
Fragmentiser residue (motor vehicles)	240700	
Fragmentiser residues	240700	
Frames - window		**
Freezers	230401	
Fridges	230401	
Fridges - compression	230401	
Fridges - electrical (absorption)	230401	
Fridges - gas powered (absorption)	230401	

Remember to also classify the detailed composition of the waste

Frit	210201	
Fruit	220606	
Fuel		**
Fuel - paraffin	291702	
Fuel oil - heavy	291001	
Fuel oil - light	291001	
Fuel oil n/o/s	291001	
Full aerosol containers		**
Fuller's earth	210302	
Fume - acid		**
Fume - baghouse		**
Fume - chemical		**
Fume extraction residue		**
Fungal solids from tank cleaning - residues	221101	
Fungicides	291503	
Furfural	291714	
Furnace (blast) - slag	270101	
Furnace (blast) - zinc slag	270105	
Furnace (blast) - zinc speiss		*
Furnace ash (foundries)	270401 or 270402	
Furnace bottom ash	270401 or 270402	
Furnace dust (foundries)	270506	
Furnace insulation		**
Furnace linings	240206	
Furnace slag	270101	
Furnace slag (rotary kiln)	270101	
Furniture		**
Furniture - metal	230406	
Furniture - office		**
G		
Gallium waste and scrap	230209	
Galvanic sludges	280807	
Galvanised coated soft and hard drawn wire	230405	
Galvanizing slab zinc bottom dross	270203	
Galvanizing slab zinc top dross	270203	
Garage oil		**
Garchey waste		*
Garden waste	220605	
Garden waste (household)	220605	
Gas (landfill) - condensate	221103	
Gas bottles		**
Gas cartridges		**
Gas cleaning residues		**
Gas cookers	230401	
Gas cylinders		**
Gas cylinders - flammable contents		**
Gas cylinders - non flammable contents		**
Gas holder sludge		**
Gas oil	291001	
Gas pipeline cleaning waste		**
Gas powered absorption fridges	230401	
Gas powered domestic appliances	230401	
Gear oil	291001	

Remember to also classify the detailed composition of the waste

Gear oil - chlorinated	291001	
Gear oil - non-chlorinated	291001	
Gearboxes	230403	
Gel - silica	280900	
General administration waste	220902	
General chemical factory waste		**
General commercial waste n/o/s	220902	
General debris		**
General demolition waste	220202	
General industrial waste n/o/s	290903	
General office waste	220902	
General waste (administration)	220902	
Genklene	291702	
Geotextiles	220405	
Germanium waste and scrap	230209	
Gland oil	291001	
Glass	210201	
Glass - cullet	210201	
Glass - powdered	210201	
Glass batch waste	210201	
Glass bottles	240501	
Glass containers	240501	
Glass containers - contaminated	240501	
Glass cullet contraries		**
Glass fibre	210304	
Glass fibre products - resin-reinforced	220402	
Glass piecings	210201	
Glass pots	240501	
Glass scraps containing lithium-niobium		*
Glass scraps containing lithium-tantalum		*
Glass-reinforced plastic	220402	
Glassware - contaminated	300000	
Glaze	210201	
Glaze - raw	210201	
Glazed pottery	210202	
Glazed product		**
Glazed ware	210202	
Gloves		**
Gloves - plastic	220402	
Glue - epoxy-based	290300	
Glue waste - animal based	220804	
Glue waste - casein based	220804	
Gluteraldehyde	291714	
Glycol	291714	
Glycol methacrylate	291206	
Goethite	280609	
Gold - scrap	230208	
Gold alloys	230211	
Gold dross (thermal metallurgy)	230208	
Gold skimmings (thermal metallurgy)	230208	
Gold slags	230208	
Gold waste and scrap	230208	
Gold wipes		*

Remember to also classify the detailed composition of the waste

Grain		**
Granite kerbs	210101	
Granulated slag from iron and steel manufacture		**
Granules - carbon	290100	
Granules - metal scrap		**
Granules - plastic	220402	
Granules of rubber	220403	
Graphite	290100	
Graphite blocks	290100	
Graphite sludge	290100	
Graphite waste - natural	290100	
Grass	220603	
Grate ash - MSW combustion residue	270403	
Grate residues		**
Gratings - guttery		*
Gravel	210101	
GRC products		*
Grease - animal	220802	
Grease - wool	220802	
Greases	220802 or 291003	
Green product		**
Green waste	220603	
Grinding dust	240301	
Grinding residue	240301	
Grinding sludge	240301	
Grinding wheels - contaminated		**
Grit		**
Grit - blasting	240302	
Grit - contaminated	240105	
Grit - sewage	240105	
Grit - sewer	240105	
Guided missile launchers	230404	
Gully emptyings	240105	
Gully emptyings - market	240105	
Gun (propellants) - inorganic		*
Gun (propellants) - organic		*
Guns	230406	
Guns (large calibre)	230406	
Guns (small calibre)	230406	
Gunwash (from paint spraying)		**
Gut contents	220705	
Guttery gratings		*
Gypsum (calcium sulphate)	280603	
Gypsum plasterboard	220302	
Gypsum wallboard	220302	
H		
Hafnium waste and scrap	230209	
Hair - animal	220702	
Hair - horse	220702	
Hair - human	220702	
Hair - pig	220702	
Hair (animal) - coarse	220702	
Hair (animal) - fine	220702	

Remember to also classify the detailed composition of the waste

Hair products and shampoo	290900	
Halide (metal) - lamps	230502	
Halides		**
Halogen - inorganic		**
Halogenated adhesives	290300	
Halogenated cleaning compounds		**
Halogenated filter cake		**
Halogenated hydrocarbons		**
Halogenated ink	290402	
Halogenated organics n/o/s	291802	
Halogenated paint waste	290202	
Halogenated sealants	290300	
Halogenated solvents (mixed)		**
Halogenated solvents (not mixed)		**
Halogenated varnish	290202	
Halon	291100	
Halon/BCF		*
Hard woods	220407	
Hard zinc spelter		*
Hardboard	220601	
Hardcore	220201	
Hardened adhesives	290300	
Hardened plaster	220301	
Hardened sealants	290300	
Hassock		*
HCFCs	291100	
Healthcare risk waste	251100	
Heat recovery system as MSW combustion residue		**
Heat transfer oil - mineral	291005	
Heat treatment salts		**
Heavy fuel oil	291001	
Heavy industrial machinery	230404	
Hedge and tree trimmings	220603	
Hematite	280609	
Hemp	220601	
Hen pen waste	220705	
Herbicide - residues	291502	
Herbicide washings	291502	
Herbicides	291502	
Hessian	220601	
Hessian sacks	220601	
Heterocyclic nitrogen compounds	291705	
Heterocyclic oxygen compounds	291705	
Heterocyclic sulphur compounds	291705	
Hexavalent chromium compounds	280803	
HFCs	291100	
Hides - animal	220704	
Hides (whole)	220704	
High density polyethylene	220402	
Hog bristles and hair	220702	
Hogging	210101	
Hoovers	230402	
Horse hair	220702	

Remember to also classify the detailed composition of the waste

Horticultural waste	220605	
Hospital - clinical waste	250000	**
Hospital - domestic waste	220901	
Hospital waste - clinical	250000	**
Hospital waste - domestic	220901	
Hospital waste - non clinical		**
Hospital waste - non-hazardous		**
Hot dip galvanizers slab zinc dross (batch)	270203	
Hot melt - adhesives	290300	
Household chemicals - redundant		**
Household dustbin waste	220901	
Household waste	220901	
Household waste - baled	220901	
Household waste - bulky	220904	
Household waste - civic amenity	220904	
Household waste - compacted	220901	
Household waste - composted	220607	
Household waste - dustbin	220901	
Household waste - garden	220605	
Household waste - pulverised	220901	
Household waste - untreated	220901	
Household waste n/o/s		**
Human blood containers		**
Human excretion containers		**
Human hair	220702	
Human tissue	250201	
Human tissue - infectious	250102	
Human tissue - non-infectious	250201	
Human tissue - non-recognisable	250201 or 250102	
Husks - cocoa	220606	
HWI - vitrified slag	270300	
Hydrates of aluminium	230205	
Hydraulic oil	291004	
Hydraulic oil - chlorinated	291004	
Hydraulic oil - non-chlorinated	291004	
Hydraulic oil - synthetic	291004	
Hydraulic oil containing PCB or PCT	291004	
Hydroboric and hydrofluoric acid (mixed)	280112	
Hydrobromic acid	280111	
Hydrocarbon tar		**
Hydrocarbons		see individual entries
Hydrocarbons - aliphatic	291702	
Hydrocarbons - aromatic	291703	
Hydrocarbons - halogenated		**
Hydrocarbons - radioactive	310000	
Hydrocarbons - refrigerants	291100	
Hydrochloric acid	280110	
Hydrochloric and chromic acid (mixed)	280112	
Hydrochloric and hydrofluoric acid (mixed)	280112	
Hydrochloric and nitric acid (mixed)	280112	
Hydrochloric and other acids (mixed)	280112	
Hydrochloric and sulphuric acid (mixed)	280112	
Hydrodesulphurisation catalyst - cobalt		**

Remember to also classify the detailed composition of the waste

Hydrodesulphurisation catalyst - nickel	230300	
Hydrodesulphurisation catalyst - molybdenum	230300	
Hydrofluoric acid	280108	
Hydrofluoric and hydroboric acid (mixed)	280112	
Hydrofluoric and nitric acid (mixed)	280112	
Hydroxide (metal) - sludge		**
Hydroxides of calcium	280208	
Hydroxides of iron	280610	
Hydroxides of potassium	280205	
Hydroxides of sodium	280202	
Hygiene waste - female	220706	
Hypochlorites		**
I		
Illegal drugs		**
Ilmenite extraction residues	270600	
Impregnated textiles		**
Impure sulphur	280402	
Incineration (tyre) - ash		**
Incineration of chemical waste - filter cake		**
Incinerator ash		**
Incinerator ash - boiler		**
Incinerator residue		**
Incontinence pads (used)	220706 or 250203	
Indium waste and scrap	230209	
Industrial machinery (heavy)	230404	
Industrial machinery (light)	230406	
Industrial products		**
Industrial products (aerosol)		**
Industrial waste	290903	
Industrial waste n/o/s - general	290903	
Infected animal parts	250102	
Infected carcasses	250102	
Infected linen (clinical)	250102	
Infected materials (clinical)	250102	
Infected offal	250102	
Infectious human tissue	250102	
Ingots (scrap) - re-melting		**
Ink - dry		**
Ink - general		**
Ink - halogenated	290402	
Ink - non-halogenated	290402	
Ink - solid		**
Ink - water based	290401	
Ink - water borne	290401	
Ink jet printer cartridges remanufacturing residues	240501	
Ink n/o/s		**
Ink tins		**
Inks - IR curing		*
Inks - UV curing		*
Inorganic acid		see individual entries
Inorganic acids (mixed) n/o/s	280112	
Inorganic acids (not mixed) n/o/s	280111	
Inorganic cyanides	280801	

Remember to also classify the detailed composition of the waste

Inorganic explosives		**
Inorganic gun propellants		*
Inorganic halide compounds		**
Inorganic halogen		**
Inorganic pharmaceuticals	291401	
Inorganic rocket propellants	320000	**
Inorganic sulphur	280402	
Inorganic wood preservatives	320000	
Insecticides	291501	**
Insecticides (aerosol)	291501	**
Instruments - musical		**
Insulating oil - non-chlorinated	291005	
Insulating oil - synthetic	291005	
Insulating oil (mineral)	291005	
Insulating oil containing PCB or PCT	291005	
Insulating oil not containing PCB or PCT	291005	
Insulation - furnace		**
Insulation products - asbestos		**
Intact tyres	220404	
Interceptor and settling tank sludge	291007	
Interceptor pit waste n/o/s	291007	
Interceptor waste - oil	291007	
Interleaving powders		**
Intermediate bulk containers		**
Iodates	280900	
Ion exchange resins		**
IR curing inks		*
Iridium 192	310000	
Iron - elemental	230102	
Iron - scrap	230102	
Iron (cast) pipes	230102	
Iron (cast) waste and scrap	230102	
Iron (tinned) waste or scrap	230102	
Iron and steel manufacturing dross		**
Iron and steel rails (used)	230101	
Iron chloride	280703	
Iron compounds		**
Iron corrugated sheets	230102	
Iron hydroxide	280610	
Iron oxide	280609	
Iron silicate	280900	
Isocyanates	291201	
Isopropanol	291714	
J		
Jam	220606	
Jarosite		*
Jelly - petroleum	291702	
Jute	220601	
Jute tow and waste	220601	
K		
Kapok	220601	
Kerbs - granite	210101	
Kerbs - stone	210101	

Remember to also classify the detailed composition of the waste

Kerbs (concrete)	210203	
Kerosene	291702	
Ketones n/o/s	291714	
Kettle elements		**
Keyboards - computer	230501	
Kieselguhr	210302	
Kiln dust - cement	270700	
Kitchen tiles		**
Kitchen waste	220901	
L		
Laboratory chemicals		**
Laboratory compounds (mixed)		**
Laboratory smalls	300000	
Laboratory waste		**
Lacquer	290201 or 290202	
Lairage waste	220705	
Laminate (paper) - aluminium	220409	
Laminated paperboard	220409	
Laminates - plastic	220402 or 220409	
Lamp waste	230502	
Lamps	230502	
Lamps - metal halide	230502	
Lamps - sodium	230502	
Lamps - street		**
Lamps/tubes - mercury vapour	230502	
Land drain pipes (clay + terracotta)	210202	
Landfill gas condensate	221103	
Landfill leachate	221103	
Lanolin	220801	
Lanthanum	230209	
Large calibre guns	230406	
Laser printer cartridges remanufacturing residues	240501	
Latex	220403	
Latex and rubber (mixed)	220403	
Latex wastes	220403	
Launchers - guided missiles	230404	
Launchers - rockets	320000	**
Leachate - landfill	221103	
Lead - elemental	230201	
Lead - scrap	230201	
Lead - tetra ethyl	291601	
Lead - tetra methyl	291602	
Lead acid batteries (drained)	230602	
Lead acid batteries (undrained)	230601	
Lead ashes and residues		**
Lead compounds	280818	
Lead dross (thermal metallurgy)	270201	
Lead pipes	230201	
Lead skimmings (thermal metallurgy)	270201	
Lead slags	270015	
Lead waste and scrap	230201	
Leaded iron scale - tank cleaning residues	291007	
Leaded petrol (gasoline) sludge	291007	

Remember to also classify the detailed composition of the waste

Leather	220701	
Leather - finished products	220701	
Leather (dyed) - dust	220701	
Leather buffing dust	220701	
Leather cuttings	220701	
Leather parings	220701	
Leather products	220701	
Leather shavings	220701	
Leather sheetings	220701	
Leucite waste	210100	
Light bulbs	230502	
Light fuel oil	291001	
Light industrial machinery	230406	
Lighting columns (concrete)	210203	
Lighting columns (steel)	230103	
Lighting lamps	230502	
Lighting tubes	230502	
Limbs		**
Lime - spent		**
Lime sludge		**
Lime slurry		**
Limestone - spent		**
Linear low density polyethylene	220402	
Linen	220601	
Linen (from treating infectious diseases)	250102	
Liners - nappy	220706	
Liners - used bed-pan	250203	
Linings - clutch		**
Linings - furnace	240206	
Linings - pot (thermal metallurgy)		**
Linings (plastic container) - contaminated	240502	
Linings from combustion	240206	
Liquid non-special wastes		**
Liquid smoke		**
Liquor - pea	241003	
Liquor - tanning		**
Liquors - pickling		**
Lithium batteries	230609	
Lithium compounds	280900	
Litho transfers		*
Lithographic deletion products		**
Lithographic developers		**
Lithographic developers (alkaline)		*
Lithographic finishers		**
Lithoplates - aluminium	230205	
Litter	220905	
Litter bin waste	220905	
Locomotives	230404	
Loose articles		**
Lorries	230403	
Lorry bodies	230403	
Low density (linear) polyethylene	220402	
Low density polyethylene	220402	

Remember to also classify the detailed composition of the waste

Lubricant filter (rolling media) - used		**
Lubricating oil	291001	
Lubricating oil - chlorinated	291001	
Lubricating oil - non-chlorinated	291001	
M		
Machine oil - synthetic	291006	
Machine oil (halogenated)	291006	
Machine oil (non-halogenated)	291006	
Machinery	230404	
Machinery - agricultural	230403	
Machinery - heavy industrial	230404	
Machinery - light industrial	230406	
Machines - washing	230401	
Maggot breeding waste	220704	
Magnesium - elemental	230209	
Magnesium carbonate	280606	
Magnesium compounds		**
Magnesium dross (thermal metallurgy)	270206	
Magnesium oxide	280607	
Magnesium sulphate	280701	
Magnesium waste and scrap	230209	
Malathion	291501	
Manganese compounds	280900	
Manganese waste and scrap		**
Manhole covers		**
Man-made fibre waste	220405	
Man-made mineral fibres	210304	
Manure - animal	220705	
Manure (pig) - liquid	220705	
Marine flares and maroons	320300 or 320600	
Marine oil spills (contaminated sand stone)	240103	
Market gully waste	240105	
Maroons and flares (marine)	320300 or 320600	
Mastic	290300	
Material - explosive		**
Material contaminated by explosive	320000	**
Materials - fire damaged		**
Materials - fireproof (electrolysis)		**
Materials - infected (clinical)	250102	
Materials - polymeric n/o/s	220402	
Materials - pyrophoric		**
Materials - radioactive	310000	
Mattresses	220904	
Meal - cooked	220703	
Meat - unfit for consumption	220703	
Mechanical domestic appliances	230402	
Mechanical parts (metal)	230403 or 230404	
Medical equipment - contaminated		**
Medicine containers - veterinary		**
Medicines - prescription	291400	
Medicines - returned	291400	
Medicines (non-prescription)	291400	
Melamine formaldehyde resins	291714	

Remember to also classify the detailed composition of the waste

Membranes - waterproofing		**
Mercaptans	291803	
Mercury - elemental	230206	
Mercury batteries	230604	
Mercury compounds	280816	
Mercury vapour lamps/tubes	230502	
Mercury waste and residues	230206	
Metal - fragmented	231701	
Metal - scrap		**
Metal - scrap (ferrous)	230101	
Metal - scrap (non-ferrous)		**
Metal cans		**
Metal chairs	230406	
Metal containers		**
Metal containers - contaminated	240501	
Metal containers - used	240502	
Metal doors	230406	
Metal dusts		**
Metal equipment		**
Metal filings		**
Metal furniture	230406	
Metal granules (scrap)		**
Metal halide lamps	230502	
Metal hydrides (batteries)	230612	
Metal hydroxide sludge		**
Metal hydroxides		see individual entries
Metal hydroxides (mixed)	280900	
Metal hydroxides n/o/s	280900	
Metal mechanical parts	230403 or 230404	
Metal offcuts		**
Metal oxides		see individual entries
Metal oxides - roaster solids		*
Metal oxides (mixed)	280900	
Metal oxides n/o/s		**
Metal packaging	240501	
Metal parts - mechanical	230403 or 230404	
Metal pesticide containers	240501	
Metal phosphates (alkali)	280900	
Metal pots		**
Metal powder		**
Metal printing plates		**
Metal safety barriers	230406	
Metal salts		see individual entries
Metal salts - alkali		**
Metal scale	240303	**
Metal surface finishing waste		**
Metal swarf		**
Metal turnings - (scrap)		**
Metal turnings - contaminated		**
Metal windows	230406	
Metalliferous mineral tailings	270600	
Metals		**
Metals - elemental n/o/s		

Remember to also classify the detailed composition of the waste

Metals (elemental) n/o/s		**
Metals and plastics from paper recycling		**
Methacrylate	291303	
Methanol	291714	
Methyl bromide	291702	
Methyl methacrylate	291303	
Methylated spirits	291714	
Methylene chloride	291801	
Methylene chloride strippings	291801	
Mica	210100	
Mica waste		**
Microbiological waste	250000	**
Microbiological waste - autoclaved	251301	
Microbiological waste - non-autoclaved	250000	**
Microwave cookers	230501	
Military equipment	230403	
Military vehicles	230403	
Milk	220703	
Milling waste - ferrous metal	230102	
Mine waste	270600	
Mineral fibres - man made	210304	
Mineral oil - heat transmission	291005	
Mineral oil based drilling (mud)	240202	
Mineral oil n/o/s	291002	
Mineral processing waste	270600	
Mineral refrigeration oil	291006	
Mineral slur (calcium)		*
Minestone	270600	
Miscellaneous combustible waste		**
Miscellaneous non-combustible waste		**
Miscible cutting oils - water	291007	
Mixed acidic waste		**
Mixed agrochemicals		**
Mixed alkalis		**
Mixed brickwork and mortar	220201	
Mixed chlorinated solvents		**
Mixed ferrous and non-ferrous scrap	230213	
Mixed flammable solvents		**
Mixed inorganic acids n/o/s	280112	
Mixed laboratory compounds		**
Mixed metal hydroxides	280900	
Mixed metal oxides	280900	
Mixed oil and sand	240203	
Mixed oil and sawdust	240203	
Mixed oils	291002	
Mixed organic acids	291701	
Mixed organic waste n/o/s		**
Mixed packaging - used	240502	
Mixed packaging n/o/s	240502	
Mixed paper and cardboard	220401	
Mixed petrol and diesel	291702	
Mixed plastics	220402	
Mixed resin sludge		**

Remember to also classify the detailed composition of the waste

Mixed rubber and latex	220403	
Mixed scrap metal	230213	
Mixed soil and stones	210101	
Mixed solvents and thinners		**
MMMFs	210304	
Molecular sieves		*
Molybdenum		**
Molybdenum catalyst (hydrodesulphurisation)	230300	
Molybdenum compounds	280900	
Molybdenum waste and scrap		**
Monochloroacetic acid	291701	
Monomers - acrylate	291206	
Monomers n/o/s	291206	
Mortar and brickwork (mixed)	210202	
Motor vehicle wrecks drained of liquids	230403	
Motor vehicles	230403	
Motorcycles	230403	
Motors - electric (contaminated)	230406	
Motors - electric (decontaminated)	230406	
Moulding sand	240201	
Moulds - calcium sulphate	280603	
Moulds - casting (ferrous)		**
Moulds - casting (non-ferrous)		**
Moulds - plaster	240201	
Moulds - synthetic	240201	
Moulds (pottery)		*
Mousses - oily		**
MSW combustion residue - APC residues	270503	
MSW combustion residue - bottom ash	270403	
MSW combustion residue - grate ash	270403	
MSW combustion residue - heat recovery system ash	240403	
Mud - brine	280704 or 240202	
Mud - drilling	240202	
Mud - red	270600	
Mud (mineral oil based drilling)	240202	
Mud (vegetable oil based drilling)	240202	
Mud (water based drilling)	240202	
Mud residues - tank cleaning	291007	
Munitions	320000	
Mushroom compost	220607	
Musical instruments		**
Myvacet oil		*
N		
N/o/s acid tars	291304	
N/o/s acids	280111	**
N/o/s alcohols	290714	
N/o/s aldehydes	290714	
N/o/s alkalis		**
N/o/s animal processing waste		**
N/o/s asbestos	260105	
N/o/s ash		**
N/o/s biocides	291500	
N/o/s CA waste		*

Remember to also classify the detailed composition of the waste

N/o/s carbonates		**
N/o/s chelating compounds	290802	
N/o/s civic amenity waste		*
N/o/s clinical waste		**
N/o/s contaminated construction waste	240400	
N/o/s drums		**
N/o/s dust		**
N/o/s elemental metals		**
N/o/s esters	291714	
N/o/s ethers	291713	
N/o/s ferrous slags		**
N/o/s filter cake		**
N/o/s fuel oil	291001	
N/o/s general commercial waste	220902	
N/o/s general industrial waste	290903	
N/o/s halogenated organics	291801	
N/o/s inorganic acids (mixed)	280112	
N/o/s inorganic acids (not mixed)	280111	
N/o/s interceptor pit waste	291007	
N/o/s ketones	291714	
N/o/s metal hydroxides	280900	
N/o/s metal oxides		**
N/o/s mineral oil	291002	
N/o/s mixed organic waste		**
N/o/s mixed packaging	240502	
N/o/s monomers	291206	
N/o/s non-ferrous slags		**
N/o/s oil	291002	
N/o/s organic acids	291701	
N/o/s organo metallics	291603	
N/o/s paint	290200	**
N/o/s phthalates	291714	
N/o/s plastic	220402	
N/o/s polymeric materials	220402	
N/o/s precursors		**
N/o/s resins		**
N/o/s rubble (building)		**
N/o/s sealants	290300	
N/o/s slags		**
N/o/s slags (primary smelting)		**
N/o/s slags (secondary smelting)		**
N/o/s textiles		**
N/o/s vegetation	220603	
Nappies (used)	220706	
Nappy liners	220706	
Napthalene	291704	
Natural graphite waste	290100	
Needles (clinical)	250101	
Nepheline synite waste	210100	
Nepheline waste	210100	
Netting - fish		**
Newspaper	220401	
Nickel - elemental	230207	

Remember to also classify the detailed composition of the waste

Nickel cadmium batteries	230603	
Nickel catalyst (hydrodesulphurisation)	230300	
Nickel compounds	280805	
Nickel hydrides (batteries)	230611	
Nickel iron (batteries)	230612	
Nickel molybdenum	230211	
Nickel waste and scrap	230207	
Niobium waste and scrap	230209	
Nitrates	280900	
Nitric acid	280103	
Nitric and chromic acid (mixed)	280112	
Nitric and hydrofluoric acid (mixed)	280112	
Nitric and phosphoric acid (mixed)	280112	
Nitrides	280900	
Nitriles	280900	
Nitrites	280900	
Nitro compounds - inorganic	280900	
Nitro compounds - organic	291708	
Nitrocellulose	291708	
Nitrogen	280510	
Nitrometallic salts	280827	
Nitrous acid	280104	
Noils of wool	220702	
Non-autoclaved microbiological waste	250000	**
Non-chlorinated engine oil	291001	
Non-chlorinated gear oil	291001	
Non-chlorinated insulating oil	291005	
Non-chlorinated lubricating oil	291001	
Non-chlorinated oil emulsions	291007	
Non-chlorinated solvents (mixed)		**
Non-clinical hospital waste		**
Non-combustible waste - miscellaneous		**
Non-ferrous casting moulds		**
Non-ferrous scrap metal		**
Non-ferrous slags n/o/s		**
Non-ferrous swarf		**
Non-flammable gas cylinder contents		**
Non-food - canteen waste	220902 or 220903	
Non-halogenated adhesives	290300	
Non-halogenated filter cake		**
Non-halogenated ink	290402	
Non-halogenated paint waste	290202	
Non-halogenated sealants	290300	
Non-halogenated solvents - paints/polyurethane		**
Non-halogenated varnish		**
Non-hazardous solid waste		**
Non-infectious human tissue	250201	
Non-pathological radioactive waste	310000	
Non-pesticide agrochemical containers		**
Non-prescription medicines	291400	
Non-recognisable human tissue	250201 or 250102	
Non-specific plastic waste	240402 or 240502	
Non-spent catalysts		**

Remember to also classify the detailed composition of the waste

Nylon	220402	
O		
Offal	220704	
Offal - infected	250201	
Offal - specified bovine	220704	
Offcuts - asbestos		**
Offcuts - asbestos cement	260201	
Offcuts - ceramic fibre	210202	
Offcuts - metal		**
Offcuts - plastic	220402	
Offcuts - timber		**
Office equipment		**
Office furniture		**
Office paper	220401	
Office waste	220902	
Office waste - general	220902	
Off-specification compost	220607	
Oil - bilge	291007	
Oil - contaminated		**
Oil - cooking		**
Oil - cutting	291006	
Oil - engine	291001	
Oil - engine (chlorinated)	291001	
Oil - engine (non-chlorinated)	291001	
Oil - fuel n/o/s	291001	
Oil - garage		**
Oil - gas	291001	
Oil - gear	291001	
Oil - gear (chlorinated)	291001	
Oil - gear (non-chlorinated)	291001	
Oil - gland	291001	
Oil - heat transfer (mineral)	291005	
Oil - heavy fuel	291001	
Oil - hydraulic	291004	
Oil - hydraulic (chlorinated)	291004	
Oil - hydraulic (non-chlorinated)	291004	
Oil - hydraulic (synthetic)	291004	
Oil - hydraulic containing PCB or PCT	291004	
Oil - insulating (mineral)	291005	
Oil - insulating (non-chlorinated)	291005	
Oil - insulating (synthetic)	291005	
Oil - insulating containing PCB or PCT	291005	
Oil - insulating not containing PCB or PCT	291005	
Oil - light fuel	291001	
Oil - lubricating	291001	
Oil - lubricating (chlorinated)	291001	
Oil - lubricating (non-chlorinated)	291001	
Oil - machine (halogenated)	291006	
Oil - machine (non-halogenated)	291006	
Oil - machine (synthetic)	291006	
Oil - mineral	291002	
Oil - mineral refrigeration	291006	
Oil - mixed	291002	

Remember to also classify the detailed composition of the waste

Oil - myvacet		*
Oil - polybutene	291001	
Oil - refrigeration (polyalkylene glycol)	291001	**
Oil - refrigeration (polyolester)	291001	**
Oil - refrigeration (synthetic)	291001	**
Oil - slop	291007	
Oil - vegetable	220801	
Oil - wool	220802	
Oil (n/o/s) and water	291007	
Oil and n/o/s absorbents	240203	
Oil and sand (mixed)	240203	
Oil and sawdust (mixed)	240203	
Oil based paint sludge	290202	
Oil based paint waste	290202	
Oil contaminated drilling muds	240202	
Oil emulsions - non-chlorinated	291007	
Oil emulsions - chlorinated	291007	
Oil filters		**
Oil filters - crushed		**
Oil filters - used		**
Oil fly ash	270502	
Oil interceptor waste	291007	
Oil n/o/s	291002	
Oil spills (marine) - contaminated sand stone	240103	
Oil wipes		**
Oil/fuel contaminated absorbents	240203	
Oil/gas treatment chemicals n/o/s		*
Oil/water mixtures	291007	
Oiled paper	220410	
Oiled textiles	220410	
Oils (miscible cutting) - water	291007	
Oily mousses		**
Oily rags	240800	
Oily swarf		**
Oligomers - acrylate	220402	
Ordnance	230403 or 230406	
Organic acids		see individual entries
Organic acids (mixed)	291701	
Organic acids n/o/s	291701	
Organic explosives		**
Organic gun propellants		*
Organic polymer sludge		**
Organic rocket propellants	320000	**
Organic solvents		**
Organic waste (mixed) n/o/s		**
Organic wood preservers		**
Organics - halogenated n/o/s	291801	
Organo metallics n/o/s	291603	
Organochlorinated wood preservatives		**
Organometallic wood preservatives	291603	
Organophosphorous compounds	291802	
Organosulphur compounds	291803	
Organotin compounds	291603	

Remember to also classify the detailed composition of the waste

Organs - animal body	220704	
Osmium	230209	
Osmium compounds	280900	
Out of date dressings	220405	
Out of date food		**
Oven cleaners (aerosol empty)	230213	
Oven pads		**
Oxalic acid	291701	
Oxides - spent		**
Oxidising agents		**
Oxygen compounds - heterocyclic	291705	
Oxygen generating candles		*
P		
Packaged perfume	290700	
Packaging - cardboard	220401	
Packaging - contaminated (cleanable)	240501	
Packaging - contaminated (not cleanable)	240502	
Packaging - metal	240501	
Packaging - mixed n/o/s (contaminated)	240502	
Packaging - paper	220401	
Packaging - plastic	220402	
Packaging - wooden	220408	
Packaging (mixed) - used	240502	
Packaging (paper) - cartonboard	220401	
Packaging (paper) - corrugated board	220401	
Pads - oven		**
Pads - used incontinence	220706 or 250203	
Pail closet contents	221001	
Paint - water based	290201	
Paint - water borne	290201	
Paint coatings - PVC	220402	
Paint -epoxy polyester powder		*
Paint n/o/s	290200	**
Paint powders		**
Paint sludge - oil based	290202	
Paint sludge - solvent based	290202	
Paint sludge (caustic)		**
Paint sludge (water based)	290201	
Paint spray booth waste		**
Paint spraying - gunwash		**
Paint stripper		**
Paint stripping solution (spent)		**
Paint thinner		**
Paint thinner - cellulose		*
Paint tins		**
Paint waste - denatured		**
Paint waste - dried		**
Paint waste - halogenated	290202	
Paint waste - non-halogenated	290202	
Paint waste - oil based	290202	
Paint waste - solvent based	290202	
Painted wood	220408	
Paints/Polyurethane (non-halogenated solvents)	290202	

Remember to also classify the detailed composition of the waste

Pallet strapping		**
Pallets	220407	
Pants - disposable		**
Pantyliners	220706	
Paper	220401	
Paper - computer	220401	
Paper - filter	220401	
Paper - filter (contaminated)	240502	
Paper - office	220401	
Paper - oiled	220410	
Paper - photographic	220410	
Paper - tarred	220410	
Paper - toilet	220401	
Paper - waxed	220410	
Paper and cardboard (mixed)	220401	
Paper combustion ash sludge	270502	
Paper containers	220401	
Paper containers - contaminated	240502	
Paper laminate - aluminium	220409	
Paper packaging	220401	
Paper packaging - cartonboard	220401	
Paper packaging - corrugated board	220401	
Paper pulp	220602	
Paper pulp - bottle washings	220602	
Paper pulp - de-inked	220602	
Paper sacks	220401	
Paper sludge	220601	
Paper slurry	220601	
Paper sorting residue		**
Paper towels (used)	220401	
Paper wipes - contaminated	220401	
Paperboard - laminated	220409	
Paraffin	291702	
Paraffin - fuel	291702	
Paraffin wax	291702	
Parings - leather	220701	
Parings of rubber	220403	
Parks and garden waste	220605	
Particles - metal scrap (ferrous)	230101	
Particles - metal scrap (non-ferrous)		**
Particles - plastic	220402	
Parts - animal (uninfected)	220704	
Parts - fish	220704	
Parts - vehicle	230403	
Pathological radioactive waste	310000	
PCBs	291715	
Pea liquor	241003	
Peat	220102	
Peat fly ash	270502	
Pelts	220704	
Pencils	220408	
Pens		**
Perchlorates	280826	

Remember to also classify the detailed composition of the waste

Perchloric acid	280111	
Perchloroethylene	291801	
Percussives	320000	**
Perfume (packaged)	290700	
Perfume (reject)	290700	
Periodates	280900	
Periodic acid	280111	
Permanganates	280900	
Peroxides		**
Peroxides - inorganic		**
Peroxides - organic	291707	
Personal protective equipment		**
Persulphates	280900	
Pesticide containers		**
Pesticide containers - metal	240501	
Pesticide containers - plastic	240502	
Pesticide residues	291501	**
Pesticide washings	291501	**
Pesticides	291501	**
Petrol	291702	
Petrol and diesel (mixed)	291702	
Petroleum jelly	291702	
Petroleum wax	291702	
Pets - crematorium ash	270403	
Pets - domestic	220704	
PFA	270501	
Pharmaceutical products (bulk)	291400	
Pharmaceutical products (retail containers)	291400	
Pharmaceutical sludge (acidic)		**
Pharmaceutical sludge (alkaline)		**
Pharmaceutical waste	291401	
Pharmaceuticals - inorganic	291401	
Phenolformaldehyde resins	291714	
Phenolic caustic	291706	
Phenolic filter cake	291703	
Phenolic resins n/o/s	291706	
Phenols (chlorinated)	291706	
Phenols (non-chlorinated)	291706	
Phenyl sulphanate	291703 or 291803	
Phosphate ester		**
Phosphate liquor		**
Phosphate sludge		**
Phosphates		**
Phosphogypsum	270600	
Phosphoric acid	280106	
Phosphoric acid/silica base polymerisation catalyst	280106	
Phosphoric and chromic acid (mixed)	280112	
Phosphoric and nitric acid (mixed)	280112	
Phosphoric and sulphuric acid (mixed)	280112	
Phosphorous	230209	
Phosphorous - elemental	230209	
Phosphorous acid	280107	
Phosphorous compounds	280822	

Remember to also classify the detailed composition of the waste

Phosphorous slags		*
Photochemicals		**
Photocopiers	230501	
Photographic activator - water-based		*
Photographic chemicals		*
Photographic developer - solvent-based		*
Photographic developer - water-based		*
Photographic film		*
Photographic film ash	270404	
Photographic fixer		*
Photographic paper	220410	
Phthalates n/o/s	291714	
Phthalic acid	291701	
Phthalic acid anyhride	291701	
Phytopharmaceutical products	291400	
Pickling acid		**
Pickling liquors		**
Pickling liquors (metal pickling)		**
Piecing (glass)	210201	
Pies - reject	220703	
Pig bristles and hair	220702	
Pig hair	220702	
Pig manure - liquid	220705	
Pigments	290500	
Pilot plant residues		**
Pilot plant wastes		**
Pipeline (gas) cleaning waste		*
Pipes (asbestos cement)	260201	
Pipes (cast iron)	230102	
Pipes (concrete)	210203	
Pipes (land drain) - clay and terracotta	210202	
Pipes (lead)	230201	
Pipes (plastic)	220402	
Pipes (steel)	230103	
Pipework		**
Piping and ducting - contaminated		**
Piric acid		*
Pitch	291303	
Pitch tank cleaning residues	291303	
Planings - road	220202	
Plant - process	230404 or 230406	
Plant pots - plastic	220402	
Plant tissue	220603	
Plaster - hardened	220301	
Plaster moulds	240201	
Plasterboard	220302	
Plasterboard - gypsum	220302	
Plastic - ABS	220402	
Plastic - glass-reinforced	220402	
Plastic - offcuts	220402	
Plastic - thermosetting	220402	
Plastic bags	220402	
Plastic bottles	220402	

Remember to also classify the detailed composition of the waste

Plastic butts	220402	
Plastic carboys (shredded) - contaminated	240502	
Plastic chairs	220402	
Plastic coated soft and hard drawn wire	230405	
Plastic container linings - contaminated	240502	
Plastic containers	220402	
Plastic containers - contaminated	240502	
Plastic corrugated sheets	220402	
Plastic crates	220402	
Plastic film	220402	
Plastic gloves	220402	
Plastic granules	220402	
Plastic laminates	220402 or 220409	
Plastic n/o/s	220402	
Plastic packaging	220402	
Plastic particles	220402	
Plastic pesticide containers	220402	
Plastic pipes	220402	
Plastic plant pots	220402	
Plastic purging		*
Plastic sheeting	220402	
Plastic waste - baled	220402 or 240502	
Plastic waste - non-specific	220402 or 240502	
Plastic windows	220402	
Plastic wrapping	220402	
Plastics	220402	
Plastics - mixed	220402	
Plastics and metals from paper recycling		**
Plastomer textiles		**
Plating sludge		**
Platinum alloys	230211	
Platinum dross (thermal metallurgy)	230208	
Platinum skimmings (thermal metallurgy)	230208	
Platinum slags	230208	
Platinum waste and scrap	230208	
Polishes (aerosol)	230213 or 290900	**
Polishing cloths		**
Polishing powders	290900	
Polishing solids		**
Polyamides		**
Polybutene oil	291001	
Polybutylene	220402	
Polybutylene terephthalate	220402	
Polycarbonates	220402	
Polychlorinated biphenyls	291715	
Polychlorinated naphthalenes	291704	
Polychlorinated triphenyls	291715	
Polyester	220402	
Polyester powder paint sludge		*
Polyester resins	220402	
Polyester saturated resins	220402	
Polyethene	220402	
Polyether polyol	220402	

Remember to also classify the detailed composition of the waste

Polyethylene	220402	
Polyethylene - high density	220402	
Polyethylene - linear low density	220402	
Polyethylene - low density	220402	
Polyethylene terephthalate	220402	
Polymer wastes	220402	
Polymeric finished products		**
Polymeric materials - scrap	220402	
Polymeric materials n/o/s	220402	
Polymeric precursors	291200	**
Polymerisation catalyst - phosphoric acid/silica base	280106	
Polymers - synthetic	220402	
Polymers of ethylene	220402	
Polymers of fluorinated ethylene	220402	
Polymers of styrene	291204	
Polymers of vinyl chloride	220402	
Polymethyl methacrylate	220402	
Polyol washing waste		*
Polyphenylene sulphides		*
Polypropylene	220402	
Polypropylene film	220402	
Polysiloxanes (silicones)	280900	
Polystyrene	220402	
Polythene	220402	
Polythene bags	220402	
Polythene sheets	220402	
Polyurethane	220402	
Polyurethane (not containing CFCs)	220402	
Polyurethane resin	220402	
Polyurethane resins	220402	
Polyvinyl acetate	220402	
Polyvinyl alcohol	291714	
Polyvinyl butyral	220402	
Polyvinyl chloride	220402	
Polyvinylidene chloride	220402	
Post-mortem waste (clinical)	250000	**
Pot lining (spent)		*
Pot linings (thermal metallurgy)		**
Pot sill (dry nitrocellulose + polyvinylidene chloride)		*
Potassium carbonate	280206	
Potassium compounds		**
Potassium cyanide	280821	
Potassium hydroxide	280205	
Potassium oxide	280204	
Potatoes	220606	
Pots - clay	210202	
Pots - glass	240501	
Pots - metal		**
Pots (plant) - plastic	220402	
Pottery	210202	
Pottery fired	210202	
Pottery glazed	210202	
Pottery moulds		*

Remember to also classify the detailed composition of the waste

Pottery shraff	210202	
Pottery unfired	210100	
Pottery unglazed	210202	
Poultry waste	220705	
Powder - aluminium	230205	
Powder - aluminium sulphide	280819	
Powder - fire extinguishing		**
Powder - scrap metal		**
Powder coating resins		**
Powder paint (epoxy/polyester)		*
Powdered glass	210201	
Powdered silica dust	210305	
Powders - coating		**
Powders - interleaving		**
Powders - paint		**
Powders - polishing	290900	
Precast concrete products	210203	
Precious metal alloys		**
Precious metal and copper processing slags		**
Precious metal ash	230211	
Precious metal bearing catalysts	230300	
Precious metal dust		**
Precious metal sludge		**
Precious metal waste and scrap		**
Precipitator residues		**
Precursors n/o/s		**
Prescribed drugs (bulk)	291400	
Prescribed drugs (retail containers)	291400	
Prescription medicines	291400	
Preservatives - wood, organic		**
Pressed sewage sludge	221003 or 221003	
Pressurised containers		**
Primary sludge	221002	
Printed circuit boards (bare)	230501	
Printed circuit boards (populated)	230501	
Printing plates (metal)		**
Printing toner (loose)		**
Private vehicles	230403	
Privy waste	221001	
Process equipment		**
Process plant	230404 or 230406	
Processed textile fibres - animal	220702	
Processed textile fibres - mixed	220900	
Processed textile fibres - synthetic	220405	
Processed textile fibres - vegetable	220601	
Processed tobacco	220601	
Processing waste - animal		**
Processing waste - fish	220704	
Processing waste - food		**
Processing waste - shellfish	220704	
Product - fired		**
Product - green		**
Products - bonded asbestos		**

Remember to also classify the detailed composition of the waste

Products - car care (aerosol)		**
Products - cosmetic (bulk)	290700	
Products - cosmetic (retail containers)	290700	
Products - dairy	220703	
Products - deletion (lithographic)		**
Products - DIY (aerosol)		**
Products - finished (polymeric)		**
Products - glazed		**
Products - industrial		**
Products - industrial (aerosol)		**
Products - leather	220701	
Products - pharmaceutical (bulk)	291400	
Products - pharmaceutical (retail containers)	291400	
Products - phytopharmaceutical	291400	
Products - resin-reinforced glass fibre	220402	
Products - sheepskin	220701	
Products - shoe care (aerosol)	290900	
Products - veterinary		**
Products - veterinary (aerosol)		**
Products - wood		**
Products (concrete) - precast	210203	
Products GRC		*
Propan-2-ol	291714	
Propellants (gun) - inorganic		*
Propellants (gun) - organic		*
Propellants (rocket) - inorganic	320000	**
Propellants (rocket) - organic	320000	**
Propene resins	291702	
Propionic acid	291701	
Proprietary alkaline cleaners		**
Protective clothing		**
Protective equipment (personal)		**
PTFE	220402	
Pulp - paper	220602	
Pulp (paper) - de-inked	220602	
Pulverised fuel ash (PFA)	270501	
Pulverised household waste	220901	
Pumping dross		**
Pushchairs	230406	
PVC	220402	
PVC Paint coatings	220402	
PVC sheeting	220402	
PVC trays	220402	
Pyridine	291705	
Pyrophoric material		**
Pyrotechnics	320000	**
Q		
Quicklime	280207 or 280208	
R		
Radio sets	230503	
Radioactive hydrocarbons	310000	
Radioactive material	310000	
Radioactive non-pathological waste	310000	

Remember to also classify the detailed composition of the waste

Radioactive pathological waste	310000	
Radioactive waste (sealed)	310000	
Rag stone	210101	
Rags		**
Rags - contaminated (solvent)	240800	
Rags - oily	240800	
Rags (used)	240800	
Rags and tissues - contaminated	240800	
Rails (iron and steel) - used	230101	
Railway ballast	240106	
Railway ballast - contaminated	240106	
Railway carriages	230404	
Railway engines	230403	
Railway sleepers (concrete)	240400	
Railway sleepers (timber)	240400	
Railway wagons	230404	
Ramie tow, noils and yarn waste		*
Rare earth metals waste and scrap		**
Raw colour		**
Raw glaze	210201	
Ray tubes - cathode	230502	
Razors - disposable	220410	
Reclaimed waste - rejected consignments		**
Recorders - video	230501	
Red mud	270600	
Redundant household chemicals		**
Refining dross		**
Refractories from combustion	240206	
Refractory dust		**
Refrigerants		**
Refrigerants - CFC	291100	
Refrigerants - HCFCs	291100	
Refrigerants - HFCs	291100	
Refrigerants - hydrocarbons		**
Refrigerants - n/o/s		**
Refrigeration equipment	230401	
Refrigeration oil - mineral	291000	**
Refrigeration oil - polyalkylene glycol	291000	**
Refrigeration oil - synthetic	291000	**
Refrigerators	230401	
Refuse		**
Refuse bags		**
Reinforced fibre -concrete	210203	
Reject perfume	290700	
Reject pies	220703	
Rejected consignments of reclaimed waste		**
Rejects - screening		**
Rejects from waste derived fuel manufacture - coarse		**
Rejects from waste derived fuel manufacture - fine		**
Re-melting scrap ingots		**
Residue - battery stripping		**
Residue - fragmentiser (cabling)	220410	
Residue - fragmentiser (circuit boards)	220410	

Remember to also classify the detailed composition of the waste

Residue - fragmentiser (domestic appliances)	220410	
Residue - fragmentiser (electrical/electronic goods)	220410	
Residue - fragmentiser (electrical/electronic parts)	220410	
Residue - fragmentiser (mixed scrap sources)	220410	
Residue - fragmentiser (motor vehicles)	220410	
Residue - fume extraction		**
Residue - grinding	240301	
Residue - incinerator		**
Residue - paper sorting		**
Residue - shot blast	240302	
Residue (APC) from MSW combustion	270503	
Residue (bottom ash) from MSW combustion	270403	
Residue (grate ash) from MSW combustion	270403	
Residue (heat recovery system) from MSW combustion		*
Residues - additive tank cleaning	291007	
Residues - alychloride	291702 or 291801	
Residues - ballast waste tank cleaning	291007	
Residues - barrelling		**
Residues - bunker tank cleaning	291007	
Residues - crop	220603	
Residues - crude oil tank cleaning	291007	
Residues - decant oil tank cleaning	291007	
Residues - distillate tank cleaning	291007	
Residues - distillation	291301	
Residues - filter bag		**
Residues - fragmentiser	220410	
Residues - fungal solids from tank cleaning	221101	
Residues - gas cleaning		**
Residues - grate		**
Residues - herbicides	291502	
Residues - ilmenite extractions	270600	
Residues - ink jet printer cartridges remanufacturing	240501	
Residues - laser printer cartridges remanufacturing	240501	
Residues - pesticide	291501	**
Residues - pilot plant		**
Residues - precipitator		**
Residues - shredder		**
Residues - slop oil tank cleaning	291007	
Residues - tank cleaning		**
Residues - tar	291301	
Residues (still) - dry cleaning		**
Residues (tank cleaning) - brine	241002	
Residues (tank cleaning) - leaded iron scale	240403	
Residues (tank cleaning) - mud		**
Residues from pitch tank cleaning	291303	
Resin - polyurethane	220402	
Resin coated foundry sands	240201	
Resin reinforced fibre products (other than glass)		**
Resin sludge (mixed)		**
Resin-reinforced glass fibre products	220402	
Resins - powder coating		**
Resins - acrylic polymer	220402	
Resins - alkyd	220402	

Remember to also classify the detailed composition of the waste

Resins - amino	291302 or 220402	
Resins - epoxy	290300	
Resins - ethene	291206	
Resins - ion exchange		**
Resins - melamine formaldehyde	291714	
Resins - phenol formaldehyde	291714	
Resins - phenolic n/o/s	291706	
Resins - polyester	220402	
Resins - polyester saturated	220402	
Resins - polyurethane	220402	
Resins - propene	291702	
Resins - rosin modified		**
Resins - silicone	220402	
Resins - styrene polymer	291204	
Resins - urea formaldehyde	291714	
Resins - vinyl acetate polymer	291202	
Resins - vinyl chloride	291205	
Resins - water based		**
Resins - zeolite		**
Resins n/o/s		**
Retailing waste	220902	
Returned medicines	291400	
Rhenium waste and scrap	230209	
Rifle butts		**
Road metal	220202	
Road metal - scarified	220202	
Road metal - weathered	220202	
Road planings	220202	
Road scalpings	220202	
Road signs	230406	
Road sweepings	240105	
Road tanker washings	241004	
Roadworks cones	220403	
Roaster solids - metal oxides		**
Rock - crushed	210101	
Rock - excavated	210101	
Rocket launchers	320000	**
Rocket propellants - inorganic	320000	**
Rocket propellants - organic	320000	**
Rocks	210101	
Rodenticides	291501	**
Rods - welding		**
Rolling lubricant filter media - used	240203	
Rolling mill emulsion		**
Roof tiles (asbestos cement)	260201	
Roof tiles (clay)	210202	
Roof tiles (concrete)	210203	
Roof tiles (slate)	210101	
Roofing felt	220201	
Roofing tiles		**
Rope	220601	
Rope (used)	220601	
Rope (wire)		**

Remember to also classify the detailed composition of the waste

Rosin modified resins		**
Rotary kiln furnace slag		*
Rubber (not including tyres)	220403	
Rubber adhesive	290300	
Rubber and latex (mixed)	220403	
Rubber granules	220403	
Rubber parings	220403	
Rubbish		**
Rubbish - contaminated		**
Rubble	220201	
Rubble - building n/o/s	220201	
Rubble - contaminated	240400	
S		
Sacks	220401 or 220402	
Sacks - asbestos		**
Sacks - contaminated	240502	
Sacks - hessian	220601	
Sacks - paper	220401	
Sacks - tea		**
Sacks - woven	220402 or 220601	
Safety barriers (metal)	230406	
Samples		**
Samples - biological		**
Sand	210101	
Sand - contaminated	240103	
Sand - foundry (non-phenolic)	240201	
Sand - foundry (phenolic)	240201	
Sand - moulding	240201	
Sand - treatment		**
Sand and oil (mixed)	240103	
Sand stone from marine oil spills - contaminated	240103	
Sander dust	240301	
Sands - foundry (burnt)	240103	
Sanitary towels		**
Sanitary towels (unused)	220410	
Sanitary towels (used)	220706	
Saw cutting slurry (diamond)		**
Sawdust	220602	
Sawdust - contaminated	240600	
Sawdust and oil (mixed)	240600	
Scale - boiler		**
Scale - contaminated	240403	
Scale - metal	240303	**
Scalpings (road)	220202	
Scarified road metal	220202	
Scouring sludge - wool	220802	
Scrap aluminium	230205	
Scrap brass	230211	
Scrap bronze	230211	
Scrap copper	230202	
Scrap gold	230208	
Scrap ingots - re-melting		**
Scrap lead	230201	

Remember to also classify the detailed composition of the waste

Scrap metal		**
Scrap metal - ferrous	230101	
Scrap metal - mechanical parts	230403 or 230404	
Scrap metal - mixed ferrous and non-ferrous	230213	
Scrap metal - non-ferrous		**
Scrap metal (ferrous) - particles	230101	
Scrap metal (mixed)	230213	
Scrap metal (non-ferrous) - particles	230212	
Scrap metal dust		**
Scrap metal filings		**
Scrap metal granules		**
Scrap metal particles (ferrous)	230101	
Scrap metal particles (non-ferrous)		**
Scrap metal powder		**
Scrap metal turnings		**
Scrap polymeric materials	220402	
Scrap silver	230208	
Scrap steel	230103	
Scrap television tubes	230501	
Scrap tin	230204	
Scrap zinc	230205	
Screening fines		**
Screening rejects		**
Screenings		**
Screenings - sewage	221004	
Screenings - sewage sludge	221004	
Screens - computer	230501	
Sealant n/o/s	290300	
Sealants - halogenated	290300	
Sealants - hardened	290300	
Sealants - non-halogenated	290300	
Sealants - water-based		**
Sealed radioactive waste	310000	
Seaweed	220603	
Secondary sludge	221003	
Seed	220603	
Seed - dressed	240800	
Selenium	230207	
Selenium - elemental	230207	
Selenium compounds	280809	
Selenium waste and scrap	230207	
Septic tank effluent	221001	
Septic tank sludge	221002	
Septic tank waste	221001	
Sets - stone	210101	
Sets - televisions	230501	
Settees	220904	
Settled sludge	221002	
Settling pond - drained sludge		**
Sewage	221002	
Sewage - grit	240105	
Sewage - screenings	221004	
Sewage sludge	221002 or 221003	

Remember to also classify the detailed composition of the waste

Sewage sludge - dewatered	221002 or 221003	
Sewage sludge - digested	221003	
Sewage sludge - pressed	221002 or 221003	
Sewage sludge - screenings	221004	
Sewage works grit	240105	
Sewer grit	240105	
Shampoo and other hair products	290801 or 290900	
Sharps - animal treatment	250101	
Sharps - human treatment	250101	
Sharps n/o/s	250101	
Shavings - ferrous metal	230102	
Shavings - leather	220702	
Shavings - wood	220602	
Sheepskin finished products	220701	
Sheepskin products	220701	
Sheet flooring		**
Sheeting - plastic	220402	
Sheeting - PVC	220402	
Sheetings - leather	220701	
Sheets - corrugated		**
Sheets - iron (corrugated)	230102	
Sheets - plastic corrugated	220402	
Sheets - polythene	220402	
Shellfish - empty shells	220704	
Shellfish processing waste	220704	
Shells - cocoa	220606	
Shells (empty) - shellfish	220704	
Ships	230404	
Shoddy	220702	
Shoe care products (aerosol)	290900	
Shopping trolleys	230406	
Shotblast residue	240302	
Shotgun cartridges/bullets	320000	**
Shredded plastic carboys - contaminated	240502	
Shredded tyres	220404	
Shredder residues		**
Sieves - molecular		*
Sievings - fish	220704	
Silica	210305	
Silica - aluminum		*
Silica crystals	210305	
Silica dust - powdered	210305	
Silica gel	280900	
Silica wastes (excluding foundry applications)	210305	
Silicate - iron	280900	
Silicate slags		**
Silicofluorides	280820	
Silicon carbide	210307	
Silicon compounds		**
Silicon organic compounds	291801	
Silicone resins	220402	
Silk waste	220702	
Silt	210102	

Remember to also classify the detailed composition of the waste

Silt - contaminated	240102	
Silt and dredgings - contaminated	240104 or 240105	
Silver - scrap	230208	
Silver compounds	280810	
Silver dross (thermal metallurgy)	230208	
Silver oxide (batteries)	230608	
Silver skimmings (thermal metallurgy)	230208	
Silver slags	230208	
Single use cameras (with batteries)	220410	
Single use cameras (without batteries)	220410	
Sisal	220601	
Sisal tow and waste		*
Skimmings - aluminium	230205	
Skimmings - copper (thermal metallurgy)	270205	
Skimmings - gold (thermal metallurgy)	230208	
Skimmings - lead (thermal metallurgy)	270201	
Skimmings - platinum (thermal metallurgy)	230208	
Skimmings - silver (thermal metallurgy)	230208	
Skimmings - zinc (thermal metallurgy)		**
Skimmings aluminium (thermal metallurgy)	230205	
Skins - animal	220704	
Skins - cocoa	220601	
Slag - blast furnace	270101	
Slag - furnace	270101 or 270102	
Slag - furnace (rotary kiln)		*
Slag - zinc (blast furnace)	270105	
Slag (granulated) from iron and steel manufacture		**
Slag from copper production	270106	
Slag from iron and steel manufacture	270101 or 270102	
Slags		**
Slags - aluminium	270104	
Slags - aluminium salts		*
Slags - copper	270106	
Slags - ferrous n/o/s		**
Slags - gold	230208	
Slags - lead	270015	
Slags - n/o/s		**
Slags - non-ferrous n/o/s		**
Slags - phosphorous		*
Slags - platinum	230208	
Slags - primary smelting n/o/s		**
Slags - secondary smelting n/o/s		**
Slags - silicate		**
Slags - silver	230208	
Slags - soda		*
Slags - zinc	270105	
Slags from precious metal and copper processing		**
Slaked lime (calcium hydroxide)	280208	
Slate	210101	
Slate floor tiles	210101	
Slate roof tiles	210101	
Slate waste	210101	
Sleepers - railway (concrete)	240400	

Remember to also classify the detailed composition of the waste

Sleepers - railway (timber)	240400	
Slip		*
Slop oil	291007	
Slop oil tank cleaning residues	291007	
Sludge		**
Sludge - (paper) combustion ash	270502	
Sludge - acid alkyl	291304	
Sludge - activated		**
Sludge - aluminium	230205	
Sludge - barium sulphate	280604	
Sludge - bentonite	240202	
Sludge - biological dewatered effluent treatment	221102	
Sludge - bioplant	221102	**
Sludge - brine reconditioning	280704	
Sludge - calcium fluoride	280208	
Sludge - calcium silicate	280900	
Sludge - caustic		**
Sludge - cement/concrete	270700	
Sludge - cesspit	221002	
Sludge - clay	240202 or 240103	
Sludge - concrete/cement	270700	
Sludge - contaminated	240900	
Sludge - crude oil desalter	291007	
Sludge - de-inking		**
Sludge - dewatered effluent treatment		**
Sludge - drained settling pond		**
Sludge - effluent treatment		**
Sludge - electrolyte		**
Sludge - enamel		**
Sludge - ferric		**
Sludge - filter		**
Sludge - filter-bed		**
Sludge - filtration		**
Sludge - flocculent (water industry)		**
Sludge - fly ash (coal or PFA)	270501	
Sludge - fly ash (oil or peat)	270502	
Sludge - gas holder		**
Sludge - graphite	290100	
Sludge - grinding	240301	
Sludge - leaded petrol (gasoline)	291007	
Sludge - lime		**
Sludge - liquid effluent		**
Sludge - metal hydroxide		**
Sludge - organic polymer		**
Sludge - paint (caustic)		**
Sludge - paint (solvent based)	290202	
Sludge - paint (water based)	290201	
Sludge - paper	220601	
Sludge - pharmaceutical (acidic)		**
Sludge - pharmaceutical (alkaline)		**
Sludge - phosphate		**
Sludge - polyester powder paint		*
Sludge - primary	221002	

Remember to also classify the detailed composition of the waste

Sludge - resin (mixed)		**
Sludge - secondary	221002	
Sludge - septic tank	221002	
Sludge - settled	221002 or 221102	
Sludge - sewage	221002 or 221003	
Sludge - sewage (dewatered)	221002 or 221003	
Sludge - sewage (digested)	221003	
Sludge - sewage (pressed)	221002 or 221003	
Sludge - sewage (screenings)	221004	
Sludge - tank cleaning		**
Sludge - tanning	240800	
Sludge - treated	221003 or 221102	
Sludge - untreated	221002 or 221102	
Sludge - waste water treatment	221002	
Sludge - water treatment		**
Sludge - wax		**
Sludge - wet electrostatic precipitator		**
Sludge - wool scouring	220802	
Sludge from settling tanks and interceptors	291007	
Sludges - galvanic	280807	
Slurries - animal	220705	
Slurry - bentonite	240202	
Slurry - cement	270700	
Slurry - ceramic	210202	
Slurry - chalk	210102	
Slurry - clay	240202 or 240103	
Slurry - concrete	270700	
Slurry - diamond saw cutting		**
Slurry - lime		**
Slurry - paper	220601	
Slurry - soil	220101	
Small calibre guns	230406	
Smalls - laboratory	300000	
Smoke		**
Smoke - liquid		**
Smoke detectors		**
Smoke flares	320000	**
Soap	220803	
Soda slags		*
Sodium - elemental	230209	
Sodium carbonate	280203	
Sodium carboxymethyl cellulose	220402	
Sodium chloride	280704	
Sodium compounds		**
Sodium cyanates	280821	
Sodium cyanide	280821	
Sodium fluorosilicate	280820	
Sodium hydroxide	280202	
Sodium hypochlorite	280900	
Sodium lamps	230502	
Sodium oxide	280201	
Sodium silicate	280900	
Sodium sulphate	280900	

Remember to also classify the detailed composition of the waste

Sodium vapour tubes	230502	
Soft and hard drawn wire - galvanised coated	230405	
Soft and hard drawn wire - plastic coated	230405	
Soft wood	220407	
Soil	220100	**
Soil - anthrax contaminated	240100	**
Soil - contaminated	240100	**
Soil - sub	210102	
Soil - top	220101	
Soil - treated		**
Soil and stones (mixed)	210101	
Soil from vegetable washing	220101	
Soil slurry	220101	
Soiled animal bedding	250203	
Soiled dressings	250202	
Soiled swabs	250202	
Solder		**
Solid - ink		**
Solid waste - non-hazardous		**
Solids - finely powdered		**
Solids - polishing		**
Soluble complex cyanides	280821	
Solvent - water borne		**
Solvent based paint sludge	290202	
Solvent based paint waste	290202	
Solvent based wax		**
Solvent contaminated rags	240800	
Solvent wipes		**
Solvent-based adhesives	290300	
Solvent-based photographic developer		*
Solvents - (mixed) flammable		**
Solvents - chlorinated (mixed)		**
Solvents - halogenated (mixed)		**
Solvents - halogenated (not mixed)		**
Solvents - non halogenated (in paints/polyurethane)		**
Solvents - non-chlorinated (mixed)		**
Solvents - organic		**
Solvents and thinners (mixed)		**
Soot	270506	
Special veterinary wastes		**
Specified bovine offal	220704	
Speiss - zinc blast furnace		*
Spelter - zinc		*
Spelter dust		*
Spent catalysts		**
Spent compost	220607	
Spent lime		**
Spent limestone		**
Spent oxides		**
Spent paint stripping solution		**
Spent pot lining		*
Spirits - methylated	291714	
Spirits, cigarettes and beers (bottled/packaged)		see individual entries

Remember to also classify the detailed composition of the waste

Spoil - colliery	270600	
Spoil - contaminated	240100 or 270600	**
Spray booth filters		**
Spray booth waste (paint)		**
Spraying - paint (gunwash)		**
Stainless steel waste and scrap	230103	
Stampings - ferrous metal	230102	
Starch	220606	
Starch - dextrin	220606	
Starch ethers	291713	
Starches (aerosol)	220606	
Starter switches - assembly	230503	
Stations - bait		**
Stearates		**
Steel	230103	
Steel - scrap	230103	
Steel (of reinforced concrete)	230103	
Steel (stainless) waste and scrap	230103	
Steel (tinned) waste or scrap	230103	
Steel cans	230103	
Steel cladding	230103	
Steel drums	230103	
Steel lighting columns	230103	
Steel pipes	230103	
Steel wool	230103	
Steel-reinforced concrete	210203	
Still bottoms		**
Still residues - dry cleaning		**
Stoma bags (used)	250203	
Stomach contents - animal	220705	
Stone	210101	
Stone cladding	210101	
Stone kerbs	210101	
Stone sets	210101	
Stones	210101	
Stones and soil (mixed)	210101	
Strapping - pallet		**
Straw	220603	
Street lamps		**
Street sweepings	220905	
String	220601	
Stripped carpeting		**
Stripper - paint		**
Strippings using methylene chloride	291702	
Styrene	291204	
Styrene copolymer	291204	
Styrene polymer resins	291204	
Styrene polymers	291204	
Sub soil	210102	
Sub soil - contaminated	240102 or 240103	
Substances - controlled		**
Sudcake		*
Suitcases		**

Remember to also classify the detailed composition of the waste

Suites - three piece	220904	
Sullage	240104	
Sulphates		**
Sulphates - thio		**
Sulphide caustic	280819	
Sulphides	280819	
Sulphites	280900	
Sulphonic acids		**
Sulphur	280402	
Sulphur - impure	280402	
Sulphur - inorganic	280402	
Sulphur compounds		**
Sulphur compounds		**
Sulphuric acid	280101	
Sulphuric and hydrofluoric acid (mixed)	280112	
Sulphuric and nitric acid (mixed)	280112	
Sulphuric and other acids (mixed)	280112	
Sulphuric and phosphoric acid (mixed)	280112	
Sulphurous acid	280112	
Surfactant - ethoxylated alkyl	290801	
Surfactant - ethoxylated alkyphenol	290801	
Swabs - soiled	250202	
Swarf		**
Swarf - metal		**
Swarf - oily		**
Swarf (ferrous)		**
Swarf (non-ferrous)		**
Sweepings - asbestos		**
Sweepings - floor	240600	
Sweepings - road	240105	
Sweepings - street	220905	
Sweeteners		**
Swimming pool chemicals		**
Switches (starter) - assembly	230503	
Synthetic adhesive	290300	
Synthetic cellulose casings		**
Synthetic fibre waste	220405	
Synthetic food colours		**
Synthetic hydraulic oil	291004	
Synthetic insulating oil	291005	
Synthetic moulds	240201	
Synthetic polymers	220402	
Synthetic refrigeration oil	291000	**
Syringes	220410 or 250101	
T		
Tailings - colliery	270600	
Tailings - metalliferous minerals	270600	
Tampons	220706	
Tank cleaning residue - additive tank	291007	
Tank cleaning residue - ballast waste tank	291007	
Tank cleaning residue - brine	241002	
Tank cleaning residue - bunker fuel oil tank	291007	
Tank cleaning residue - crude oil tank	291007	

Remember to also classify the detailed composition of the waste

Tank cleaning residue - decant oil tank	291007	
Tank cleaning residue - distillate tank	291007	
Tank cleaning residue - fungal solids	221101	
Tank cleaning residue - leaded iron scale	240403	
Tank cleaning residue - mud		**
Tank cleaning residue - slop oil	291007	
Tank cleaning residues		**
Tank cleaning residues - bunker tank	291007	
Tank cleaning sludge		**
Tank waste - septic	221002	
Tanning liquor		**
Tanning sludge	240800	
Tantalum waste and scrap	230209	
Tantalum wire	230209	
Tantalum-bearing tin slags	270107	
Tape - adhesive		*
Tapes		**
Tar		**
Tar - hydrocarbon		**
Tar residues	291301	
Tarmacadam	220202	
Tarred paper	220410	
Tarry materials		**
Tars - coal	291503	
Tea	220603	
Tea chests		**
Tea sacks		**
Teflon	220402	
Telephones	230503	
Television sets	230501	
Television tubes (scrap)	230501	
Tellurides	280814	
Tellurium - elemental	230209	
Tellurium compounds	280814	
Tellurium waste and scrap	230209	
Teratogens		**
Terphenyls - polyhalogenated	291715	
Terracotta and clay land drain pipes	210202	
Tetra ethyl lead	291601	
Tetra methyl lead	291602	
Textile fibres (processed) - animal	220702	
Textile fibres (processed) - mixed	220900	**
Textile fibres (processed) - synthetic	220405	
Textile fibres (processed) - vegetable	220601	
Textile fibres (unprocessed) - animal	220702	
Textile fibres (unprocessed) - mixed	220900	**
Textile fibres (unprocessed) - synthetic	220405	
Textile fibres (unprocessed) - vegetable	220601	
Textiles - cotton	220601	
Textiles - elastomer		**
Textiles - impregnated		**
Textiles - plastomer		**
Textiles - woollen	220702	

Remember to also classify the detailed composition of the waste

Textiles (oiled)	220410	
Textiles n/o/s		**
Thallium - elemental	230209	
Thallium compounds	280900	
Thallium waste and residues	230209	
Thallium waste and scrap	230209	
Thermal fluids	291005	
Thermalite blocks	210203	
Thermoplastics	220402	
Thermosetting plastics	220402	
Thinner - paint		**
Thiocyanides	290710	
Thiosulphates		**
Thorium waste and scrap	230209	
Three piece suites	220904	
Tile		**
Tiles - kitchen		**
Tiles - roofing		**
Tiles (asbestos)		**
Tiles (floor) - ceramic	210202	
Tiles (floor) - clay	210202	
Tiles (floor) - concrete	210203	
Tiles (floor) - slate	210101	
Tiles (roof) - clay	210202	
Tiles (roof) - concrete	210203	
Tiles (roof) - slate	210101	
Timber - cooling towers	220408	
Timber - treated	220408	**
Timber - untreated	220408	
Timber doors		**
Timber offcuts		**
Timber railway sleepers	240400	
Timber treatment coatings		**
Timber windows		**
Tin - elemental	230204	
Tin - scrap	230204	
Tin compounds	280812	
Tin slags - tantalum-bearing	270107	
Tin waste and scrap	230204	
Tinned iron waste or scrap	230102	
Tinned steel waste or scrap	230103	
Tins - ink		**
Tins - paint		**
Tissue - animal	220704	
Tissue - human	250201	
Tissue - human (infectious)	250101	
Tissue - human (non-infectious)	250201	
Tissue - human (non-recognisable)	250201	
Tissue - plant	220603	
Tissues	220401	
Tissues and rags - contaminated	240600	
Titanium		**
Titanium compounds		**

Remember to also classify the detailed composition of the waste

Titanium dioxide	280601	
Titanium filter cake	280900	
Titanium salts		**
Titanium waste and scrap		**
Tobacco - processed	220601	
Tobacco - unprocessed	220601	
Toilet - chemical waste	221001	
Toilet paper	220401	
Toluene	291703	
Toner - printing (loose)		**
Toner cartridges	240502	
Toothbrushes - disposable	220402	
Top dross - galvanising slab zinc	270203	
Top soil	220101	
Top soil - contaminated	240101	
Towels - sanitary		**
Towels (paper) - used	220401	
Towels (sanitary) - unused	220410	
Towels (sanitary) - used	220706	
Transfer station waste		**
Transfers - litho		*
Transformers (with PCBs or PCTs)	230406	
Transformers (without PCBs or PCTs)	230406	
Transformers with oil cooling systems	230406	
Transition metal catalysts	230300	
Trash - de-inking		**
Travel baggage		**
Trays - PVC	220402	
Treated sludge	221003 or 221102	
Treated soil		**
Treated timber	220408	**
Treatment - water (chemicals)		**
Treatment - water (chemicals) n/o/s		**
Treatment chemicals n/o/s (oil/gas)		**
Treatment sand	240104	
Treatment sludge - effluent		**
Treatment sludge - wastewater	221002	
Treatment sludge - water		**
Tree and hedge trimmings	220603	
Trees	220407	
Tremolite asbestos	260104	
Tributyltin waste	291603	
Trichlorethane	291801	
Trichlorethane (1,1,1)	291801	
Trichloroethylene	291801	
Trichlorotrifluoroethylene	291100	
Triethylamine catalyst for setting foundry sands	291711	
Trimmings - ferrous metal	230102	
Trimmings - hedge and tree	220603	
Trivalent chromium compounds	280900	
Trolleys - shopping	230406	
Truck (intact) tyres	220404	
Truck (shredded) tyres	220404	

Remember to also classify the detailed composition of the waste

Tubes - fluorescent	230502	
Tubes - fluorescent (crushed)	230502	
Tubes - fluorescent (high pressure) (loose)	230502	
Tubes - fluorescent (high pressure) (packaged)	230502	
Tubes - fluorescent (low pressure) (loose)	230502	
Tubes - fluorescent (low pressure) (packaged)	230502	
Tubes - lighting	230502	
Tubes - sodium vapour	230502	
Tubes (scrap television)	230501	
Tubes/lamps - mercury vapour	230502	
Tumble dryers	230401	
Tungsten		**
Tungsten compounds	280900	
Tungsten nickel sulphate		*
Tungsten waste and scrap		**
Turnings - ferrous metal	230102	
Turnings - metal scrap		**
Turnings (metal) - contaminated		**
Turpentine	291718	
TVs	230501	
Twine (used)	220601	
Tyre incineration - ash		**
Tyres - intact	220404	
Tyres - shredded	220404	
Tyres intact - agricultural	220404	
Tyres intact - car	220404	
Tyres intact - earthmover	220404	
Tyres intact - truck	220404	
Tyres shredded - agricultural	220404	
Tyres shredded - car	220404	
Tyres shredded - earthmover	220404	
Tyres shredded - truck	220404	
U		
Umbrellas	230406	
Underlay - carpet		**
Undischarged air bags	320500	
Unfired pottery	210102	
Unfit for consumption - meat	220703	
Unglazed pottery	210202	
Uninfected animal parts	220704	
Unprocessed textile fibres - animal	220702	
Unprocessed textile fibres - mixed	220900	
Unprocessed textile fibres - synthetic	220405	
Unprocessed textile fibres - vegetable	220601	
Unprocessed tobacco	220601	
Unreinforced concrete	210203	
Untreated household waste	220901	
Untreated sludge	221002 or 221102	
Untreated timber	220408	
Unused sanitary towels	220410	
UPVC cut-offs	220402	
Uranium - elemental	230209	
Uranium compounds	280900	

Remember to also classify the detailed composition of the waste

Urea formaldehyde resins	291714	
Urea formaldehyde resins	291714	
Urine - animal	220705	
Urine containers	250203	
Used bed-pan liners	250203	
Used cardboard packaging	240502	
Used clothing		**
Used cordage	220601	
Used empty containers		**
Used explosive charges		**
Used iron and steel rails	230101	
Used metal containers	240502	
Used mixed packaging	240502	
Used nappies	220706	
Used oil filters		**
Used paper towels	220401	
Used rags	240800	
Used rope	220601	
Used sanitary towels	220706	
Used stoma bags	250203	
Used twine	220601	
UV curing inks		*
V		
Vaccine waste	250102	
Vacuum cleaners	230402	
Vanadium - elemental		**
Vanadium ashes and residues		**
Vanadium compounds	280802	
Vanadium pentoxide	280802	
Vanadium pentoxide catalyst	230300 or 280802	
Vanadium waste and scrap		**
Varnish	290200	**
Varnish - halogenated	290202	
Varnish - non-halogenated		**
Varnish - water-based	290201	**
Vegetable oil	220801	
Vegetable oil and water	220801	
Vegetable oil based drilling (mud)	240202	
Vegetable washings		**
Vegetable waste	220606	
Vegetation n/o/s	220603	
Vehicle brake shoes - asbestos	230403	
Vehicle components	230403	
Vehicle parts	230403	
Vehicles - agricultural	230403	
Vehicles - cars	230403	
Vehicles - commercial	230403	
Vehicles - fighting	230403	
Vehicles - lorries	230403	
Vehicles - military	230403	
Vehicles - motor	230403	
Vehicles - private	230403	
Veneer	220408	**

Remember to also classify the detailed composition of the waste

Vermiculite	210302	
Vermin	220704	
Vessels and other floating structures	230404	
Veterinary medicine containers		**
Veterinary products		**
Veterinary products (aerosol)		**
Veterinary waste		**
Veterinary wastes - clinical		**
Veterinary wastes - special		**
Video recorders	230501	
Vinyl acetate	291202	
Vinyl acetate polymer resins	291202	
Vinyl chloride polymers	220402	
Vinyl chloride resins	291205	
Vinyl pyridine	291205	
Vinylidene chloride	291206	
Visual display units	230501	
Vitamins		**
Vitreous enamels	210201	
Vitrified ash	270300	
Vitrified slag from HWI	270300	
W		
Wagons - railway	230404	
Wallboard - gypsum	220302	
Ware - glazed	210202	
Washed fibre kegs		**
Washing machines	230401	
Washing waste - di-isocyanate		**
Washing waste - food	221102	
Washing waste - polyol		*
Washings - agrochemical containers	241003	
Washings - fluoroborates	280820	
Washings - herbicide	291502	
Washings - pesticide	291501	**
Washings - vegetables		**
Waste		**
Waste - garden	220605	
Waste - (washing) - di-isocyanate		**
Waste - (washing) - polyol		*
Waste - acidic (mixed)		**
Waste - ammonia	280508	
Waste - autoclaved clinical	250301	
Waste - baled plastic	220402 or 240502	
Waste - botanical	220605	
Waste - building	220201	
Waste - cable stripping	230405	
Waste - canteen (food)	220703	
Waste - canteen (non-food)	220902 or 220903	
Waste - carpet laying		**
Waste - casein based glue	220804	
Waste - cesspool	221001	
Waste - chemical toilet	221001	
Waste - chocolate	220703	

Remember to also classify the detailed composition of the waste

Waste - civic amenity household	220904	
Waste - clinical		**
Waste - commercial	220902	
Waste - customer		**
Waste - demolition (contaminated)	240400	
Waste - domestic	220901	
Waste - dry		**
Waste - dye penetrant	290600	
Waste - egg	220703	
Waste - excavation		**
Waste - fellmongering		**
Waste - feminine hygiene	220706	
Waste - fermentation	221101	
Waste - finishing		**
Waste - fish	220704	
Waste - fish (from processing)	220704	
Waste - fish processing	220704	
Waste - garchey		*
Waste - gas pipeline cleaning		**
Waste - general administration	220902	
Waste - general chemical factory		**
Waste - general demolition	220202	
Waste - general office	220902	
Waste - green	220603	
Waste - healthcare risk	251100	
Waste - horticultural	220605	
Waste - hospital clinical		**
Waste - hospital domestic	220901	
Waste - hospital non-clinical		**
Waste - household	220901	
Waste - household (untreated)	220901	
Waste - household dustbin	220901	
Waste - household n/o/s		**
Waste - industrial	290903	
Waste - lairage	220705	
Waste - lamp	230502	
Waste - litter bin	220905	
Waste - maggot breeding	220704	
Waste - metal surface (finishing)		**
Waste - microbiological	250000	**
Waste - microbiological, autoclaved	251301	
Waste - microbiological, non-autoclaved	250000	**
Waste - mine	270600	
Waste - non-hazardous hospital		**
Waste - non-hazardous, solid		**
Waste - non-pathological radioactive	310000	
Waste - non-specific plastic	220402 or 240502	
Waste - office	220902	
Waste - parks and garden	220605	
Waste - pathological radioactive	310000	
Waste - poultry	220705	
Waste - privy	221001	
Waste - retailing	220902	

Remember to also classify the detailed composition of the waste

Waste - shellfish processing	220704	
Waste - slate	210101	
Waste - solvent based paint	290202	
Waste - transfer station		**
Waste - tributyltin	291603	
Waste - vaccine	250102	
Waste - vegetable	220606	
Waste - veterinary		**
Waste - zinc amalgam	230211	
Waste (sealed radioactive)	310000	
Waste and scrap aluminium	230205	
Waste and scrap antimony		**
Waste and scrap beryllium	230207	
Waste and scrap bismuth	230209	
Waste and scrap cadmium	230207	
Waste and scrap cermet		**
Waste and scrap chromium	230207	
Waste and scrap cobalt		**
Waste and scrap copper	230202	
Waste and scrap gallium	230209	
Waste and scrap germanium	230209	
Waste and scrap hafnium	230209	
Waste and scrap indium	230209	
Waste and scrap lead	230201	
Waste and scrap magnesium	230209	
Waste and scrap molybdenum		**
Waste and scrap nickel	230209	
Waste and scrap niobium	230209	
Waste and scrap of alloy steels (other than iron or steel)	230103	
Waste and scrap of cast iron	230102	
Waste and scrap of gold	230208	
Waste and scrap of platinum	230208	
Waste and scrap of precious metals		**
Waste and scrap of stainless steel	230103	
Waste and scrap rare earth metals		**
Waste and scrap rhenium	230209	
Waste and scrap selenium	230207	
Waste and scrap tantalum	230209	
Waste and scrap tellurium	230209	
Waste and scrap thallium	230209	
Waste and scrap thorium	230209	
Waste and scrap tin	230204	
Waste and scrap titanium		**
Waste and scrap tungsten		**
Waste and scrap vanadium		**
Waste and scrap zinc	230205	
Waste and scrap zirconium		**
Waste bins		**
Waste derived fuel manufacture (rejects) - coarse		**
Waste derived fuel manufacture fine (rejects) - fine		**
Waste or scrap of tinned iron	230102	
Waste or scrap of tinned steel	230103	
Waste water filter plant filter cake		**

Remember to also classify the detailed composition of the waste

Waste water treatment sludge	221002	
Wastes - latex	220403	
Wastes - pilot plant		**
Wastes - polymer	220402	
Wastes (veterinary) - clinical		**
Wastes (veterinary) - special		**
Water - contaminated		**
Water - waste filter plant cake		**
Water and oil (n/o/s)	291007	
Water and oil (vegetable)	220801	
Water borne - ink	290401	
Water borne paint	290201	
Water borne solvent		**
Water butts		**
Water heater elements	230212	
Water miscible cutting oils	291007	
Water treatment chemicals		**
Water treatment chemicals n/o/s		**
Water treatment sludge		**
Water/oil mixtures	291007	
Water-based - resins		**
Water-based adhesives	290300	
Water-based drilling (mud)	240202	
Water-based ink	290401	
Water-based paint	290201	
Water-based paint sludge	290201	
Water-based photographic activator		*
Water-based photographic developer		*
Water-based sealants		**
Water-based varnish	290201	**
Water-based wax		**
Waterproofing membranes		**
Wax - paraffin	291702	
Wax - petroleum	291702	
Wax - solvent based		**
Wax - water based		**
Wax sludge		**
Waxed paper	220410	
Waxes		**
Weathered road metal	220203	
Weeds	220603	
Welding rods		**
Wet cell batteries - drained	230601	
Wet cell batteries - undrained	230602	
Wet cellophane	220402	
Wet cellulosic fibre	220601	
Wet cellulosic film	220402	
Wet concrete	270700	
Wet electrostatic precipitator sludge		**
Wheels (grinding) - contaminated		**
White dross		*
White spirit	291702	
Whole hides	220704	

Remember to also classify the detailed composition of the waste

Window frames		**
Windows (metal)	230406	
Windows (plastic)	220402	
Windows (timber)		**
Wine lees	221101	
Wipes - baby	220706	
Wipes - fem-fresh	220706	
Wipes - gold		*
Wipes - oil		**
Wipes - solvent		**
Wiping cloths		**
Wire - electrical	230405	
Wire - tantalum	230209	
Wire (galvanised coated) soft and hard drawn	230405	
Wire (plastic coated) soft and hard drawn	230405	
Wire rope		**
Wire wool		**
Wood	220407	
Wood - hard	220407	
Wood - painted	220408	
Wood - soft	220407	
Wood cuttings	220407	
Wood preservatives - inorganic		**
Wood preservatives - organic		**
Wood preservatives - organochlorinated		**
Wood preservatives - organometallic	291603	
Wood products		**
Wood shavings	220602	
Wooden chairs		**
Wooden containers	220408	
Wooden containers - contaminated	240502	
Wooden crates	220408	
Wooden packaging	220408	
Wooden pallets	220408	
Wool	220702	
Wool - cotton	220601	
Wool - noils	220702	
Wool - steel	230103	
Wool (wire)		**
Wool grease	220802	
Wool oil	220802	
Wool scouring sludge	220802	
Woollen textiles	220702	
Woven sacks		**
Wrapping - plastic	220402	
X		
X-ray equipment	230406	
X-ray film		*
Xylene	291703	
Xylidine	291703	
Y		
Yarn		**
Yeast	221101	

Remember to also classify the detailed composition of the waste

Yttrium - elemental	230209	
Yttrium compounds	280900	
Z		
Zeolite resins		**
Zinc - elemental	230203	
Zinc - scrap	230203	
Zinc amalgam waste	230211	
Zinc ashes and residues	230203	
Zinc blast furnace slag	270105	
Zinc blast furnace speiss		*
Zinc carbon (batteries)	230605	
Zinc compounds	280807	
Zinc die cast dross	270203	
Zinc dross (thermal metallurgy)	270203	
Zinc oxide	280807	
Zinc skimmings		**
Zinc skimmings (thermal metallurgy)		**
Zinc slags	270105	
Zinc spelter		*
Zinc spelter (hard)		*
Zinc waste and scrap	230205	
Zirconia	280900	
Zirconium		**
Zirconium compounds	280900	
Zirconium waste and scrap		**

Remember to also classify the detailed composition of the waste